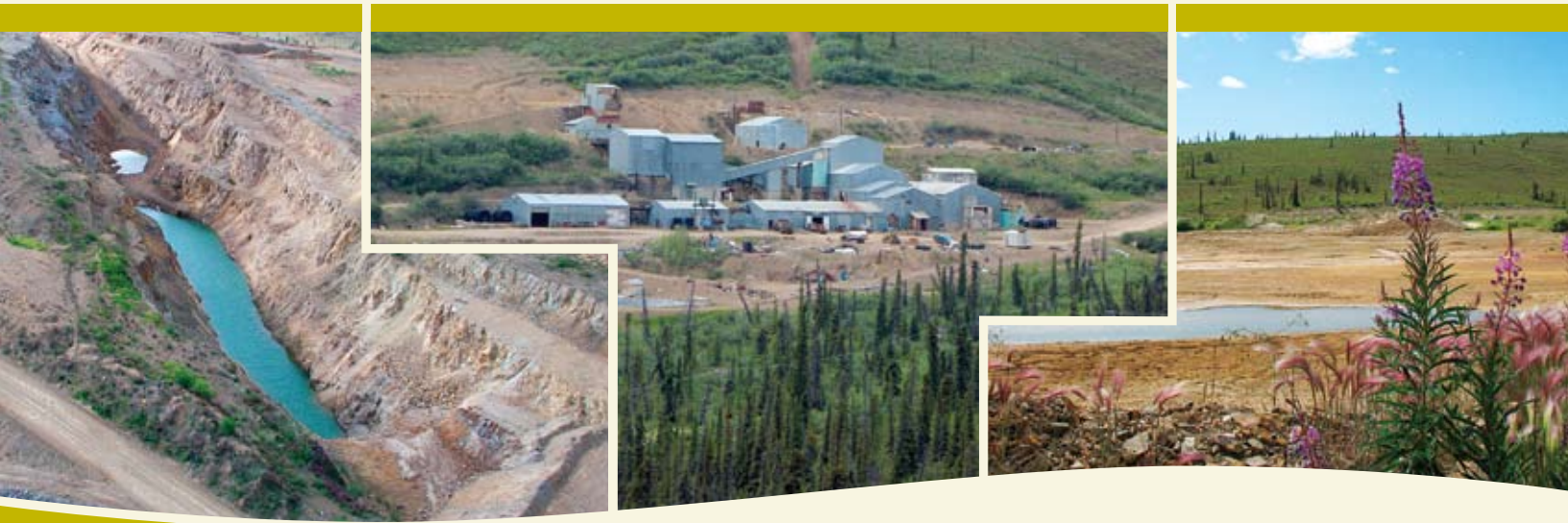


# ABANDONED MINES



*Photos from left to right: Brown-McDade pit; mill site as it looks today and; tailings pond*

## Mount Nansen Mine BACKGROUND

Mount Nansen Mine is a former gold and silver mine which is currently under government care. The Mount Nansen property is located 60 km west of Carmacks and 180 km north of Whitehorse, Yukon and is within the traditional territory of the Little Salmon/Carmacks First Nation.

In 1999, the mine owner, BYG Natural Resources Inc. (BYG) was unable to meet the requirements of the water licence and as a result, the mine was closed. Immediately after shutdown, BYG appointed a receiver. On July 28, 1999, the receiver abandoned the property, leaving a significant environmental liability. Since this time, government took responsibility for care and maintenance of the property.

Government of Yukon and Government of Canada along with Little Salmon/Carmacks First Nation are actively involved in the planning for the final closure and remediation of this abandoned mine.

The overall goal is to bring the Mount Nansen site to closure as soon as possible, involve Little Salmon/Carmacks First Nation and the community in the process and maximize benefits for locals through employment opportunities associated with closure. Technical and scientific studies are being used to support the final closure and remediation plan.

### CONTACT INFORMATION

Tel: (867) 393-7098  
Fax: (867) 456-6780

[yukonabandonedmines@gov.yk.ca](mailto:yukonabandonedmines@gov.yk.ca)  
[www.emr.gov.yk.ca/aam/](http://www.emr.gov.yk.ca/aam/)