

Agriculture Branch Fact Sheet

This fact sheet describes the services and responsibilities of the Agriculture Branch of the Department of Energy, Mines and Resources (EMR).



Services and Responsibilities

EMR Agriculture Branch delivers and manages the following programs and services:

- reviewing agriculture land applications (Agriculture Policy and *Yukon Lands Act*);
- planning agriculture land for disposition (Agriculture Policy); and
- inspecting development of agriculture land dispositions (Agriculture Policy and *Yukon Lands Act*).

Agriculture Extension activities under the Agriculture Policy including:

- crop research and demonstrations;
- education, seminars and publications;
- farm site visits to provide production and management advice; and
- soil, feed and disease diagnostic testing and analysis.

Contact Information

Department:

Energy, Mines and Resources,
Agriculture Branch,
Sustainable Resources Division

Location:

300 Main Street, Suite 320,
Elijah Smith Building, Whitehorse

Mailing Address:

Box 2703
Whitehorse, Yukon Y1A 2C6

Phone:

(867) 667-5838 OR call toll free
1-800-661-0408 ext. 5838

Fax:

(867) 393-6222

E-mail:

agriculture@gov.yk.ca

Website:

www.emr.gov.yk.ca/agriculture

Agriculture Industry Development Programs:

- livestock control (*Pounds Act* and *Highways Act*);
- brands inspection (*Brands Act*);
- meat inspection (*Agriculture Products Act*); and
- animal health and protection (*Animal Health Act*, *Animal Protection Act*).

Agricultural Policy Framework

The Agricultural Policy Framework (APF) is a national framework the Yukon government signed in the summer of 2002. The objective of the APF is for Canada to become a world leader in food safety, innovation and environmentally responsible production.

The components of the agreement include: risk management, food safety and food quality, renewal, science and innovation and environment. These are all key areas for industry growth and development and will promote increased environmental stewardship and more complete food safety and quality assurance for the benefit of all Yukoners.

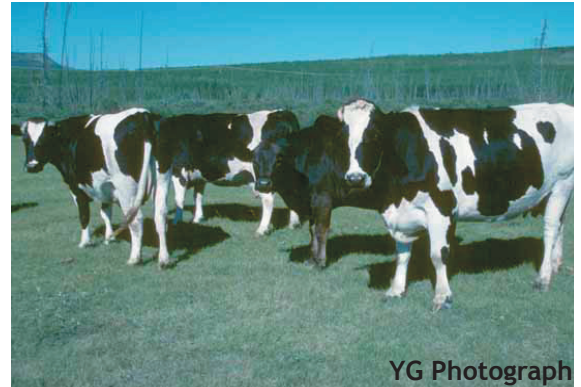
New services and programs are now available under the APF. Pick up an information package at the Agriculture Branch or visit our web site at www.emr.gov.yk.ca/agriculture.

Q&As - Agriculture Branch

May I apply for agriculture land?

You may apply for agriculture land if:

- you are a Canadian Citizen or have permanent resident status;
- you have resided in Yukon for one year prior to application; and
- you are at least 19 years of age.



How do I apply for agriculture land?

Before you apply for agriculture land, contact the Agriculture Branch for information about the agriculture land program and policies. Staff will confirm if the area you are interested in is available. When you submit your completed application, you must also include information on proposed use and timing improvements, as well as existing and adjacent land use including mining claims; a map or aerial photo showing the location and size of the application area; and an application fee of \$25 plus GST.

Where do I go for an agriculture land application?

Agriculture land applications are available from the Agriculture Branch on the third floor of the Elijah Smith Building, Suite 320, 300 Main Street in Whitehorse or on our website at www.emr.gov.yk.ca/agriculture.

Who makes decisions regarding agriculture land applications?

The Director of Agriculture approves agriculture land applications after a comprehensive review process.

Where can I farm in the Yukon?

There are pockets of arable land located throughout the Yukon that are suitable for agriculture. The Yukon Real Estate Guide provides a listing of private farm land for sale. Otherwise, if you wish to apply through the Agriculture Branch, the land must be relatively level, to a maximum of 65 ha in size, and unencumbered by other uses. Land is available either on a spot land application basis or occasionally through a lottery system.



What is the value of Yukon agricultural production?

According to the 2001 census, the total gross farm receipts totalled \$4.2 million dollars. Total farm capital amounted to just over \$50 million dollars.

How many farms are there in the Yukon?

As of the 2001 census there were 170 farms in the Yukon. That number is now estimated to be upward of 185 farms.

How many horses are there in the Yukon?

There are approximately 1700 horses in the Yukon.

What crops grow well in the Yukon?

Crops such as grass hays, oats, hardy vegetable crops such as potatoes, and greenhouse vegetables and flowers all grow well in the Yukon.

