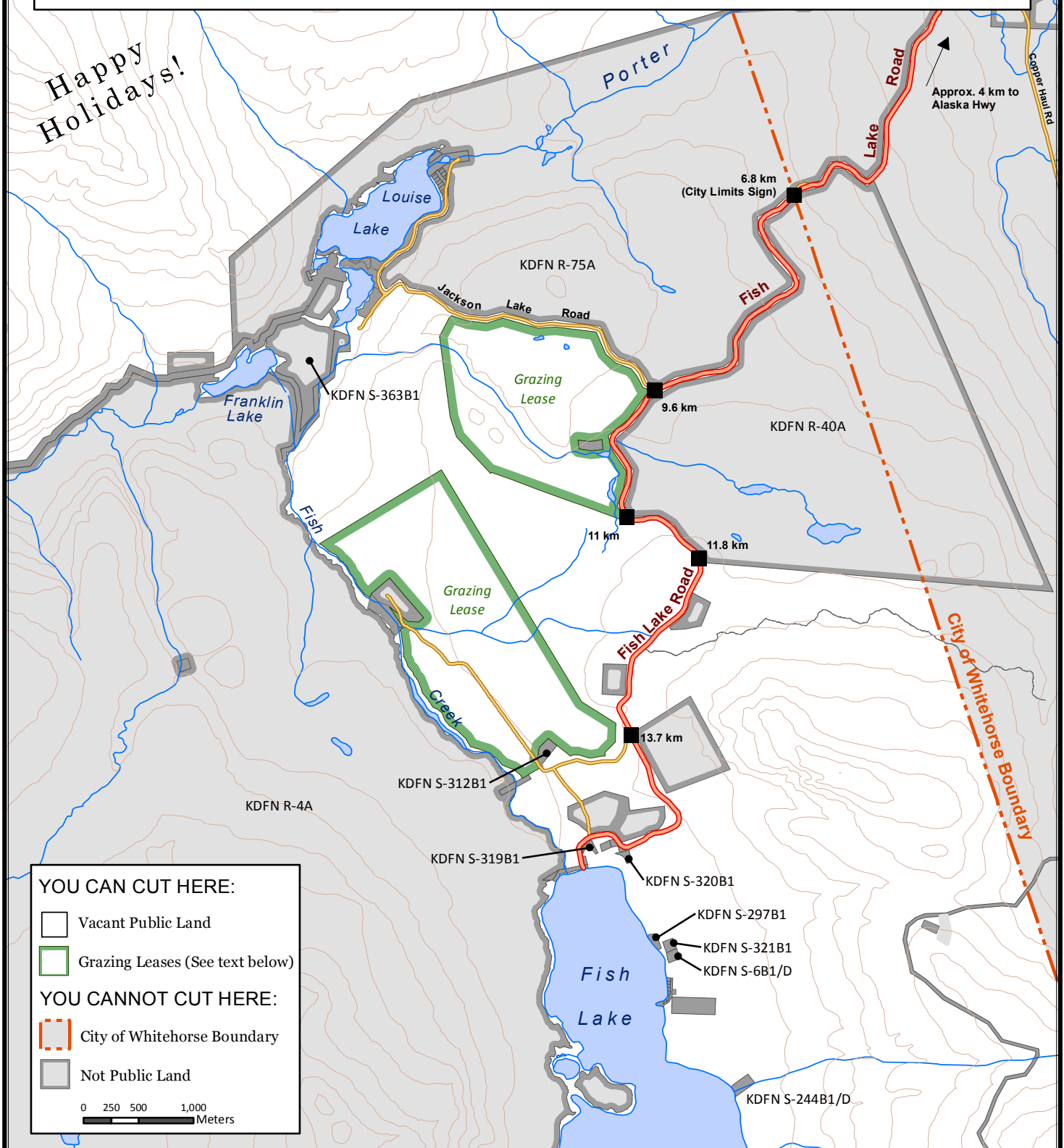


# Fish Lake Road Christmas Tree Cutting

Happy Holidays!



**YOU CAN CUT HERE:**

- Vacant Public Land
- Grazing Leases (See text below)

**YOU CANNOT CUT HERE:**

- City of Whitehorse Boundary
- Not Public Land

0 250 500 1,000  
Meters

**█** Christmas trees must be harvested only on vacant **Yukon Public Land**. Harvest trees and park vehicles well away from roads to ensure safe passage.

Please use care to minimize impacts to adjacent properties, Fish Lake Road traffic, First Nations Settlement Land and Agricultural Leases. Grazing leases allow for public access but gates must be left as found and livestock must not be harassed.

**■** For more information contact the Forest Management Branch at **1-800-661-0408 ext. 3999** or **www.forestry.gov.yk.ca**

