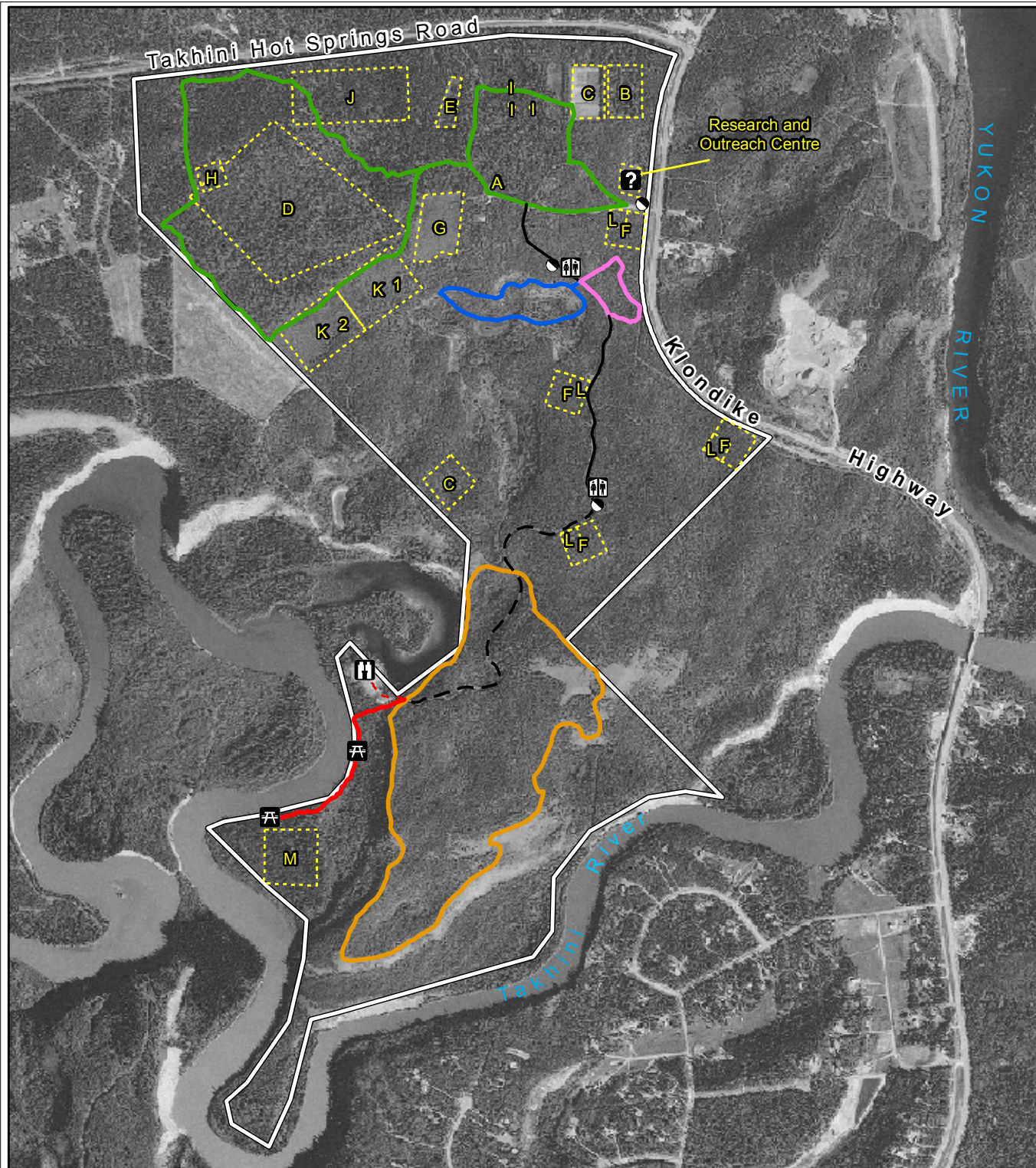


# Gunnar Nilsson Mickey Lammers Research Forest



- Information
- Out House
- Park Bench (to be completed 2011)
- Viewing platform
- Parking & Turnaround Points
- Connector Route 1 (994m)
- Connector Route 2 (1km)
- Forest Science Loop (4km)
- Elders Trail (420m)
- Kettle Lake Trail (978m)
- Lowland Trail (640m)
- Upland Route (3.2km)
- Viewpoint Trail (165m)
- Forest Research Areas
- Research Forest Boundary

- A** INFRASTRUCTURE
- B** LODGEPOLE PINE PROVENANCE STUDIES
- C** AGRICULTURAL TEST SITE
- D** COMMUNITY (BOREAL FOREST) ECOSYSTEM MONITORING PROJECT
- E** TREE + SHRUB HARDINESS STUDY
- F** PINE THINNING STUDY
- G** GENETICS TESTING
- H** ACID RAIN NATIONAL EARLY WARNING SYSTEM
- I** NATIONAL VEGETATION + INVERTEBRATE DECOMPOSITION STUDY
- J** WHITE SPRUCE PROVENANCE STUDIES + CLIMATE CHANGE PROJECT
- K1** ASSISTED MIGRATION ADAPTATION TRIAL
- K2** FUTURE PROVENANCE TRIALS
- L** SECOND THINNING OF LODGEPOLE PINE THINNING TRIAL
- M** PROPOSED RESEARCH TRIAL IN MATURE WHITE SPRUCE ON FLOOD PLAIN SITE

Map Compiled By:  
GIS Section  
Forest Management Branch  
Energy, Mines and Resources  
Government of Yukon  
<http://www.emr.gov.yk.ca/forestry/>  
October 2010

1:16,500

**Forest  
Management  
Branch  
Yukon Territory**

Projection: UTM Zone 8 Datum: NAD 83

