

6. APPENDIX 3 MAPS

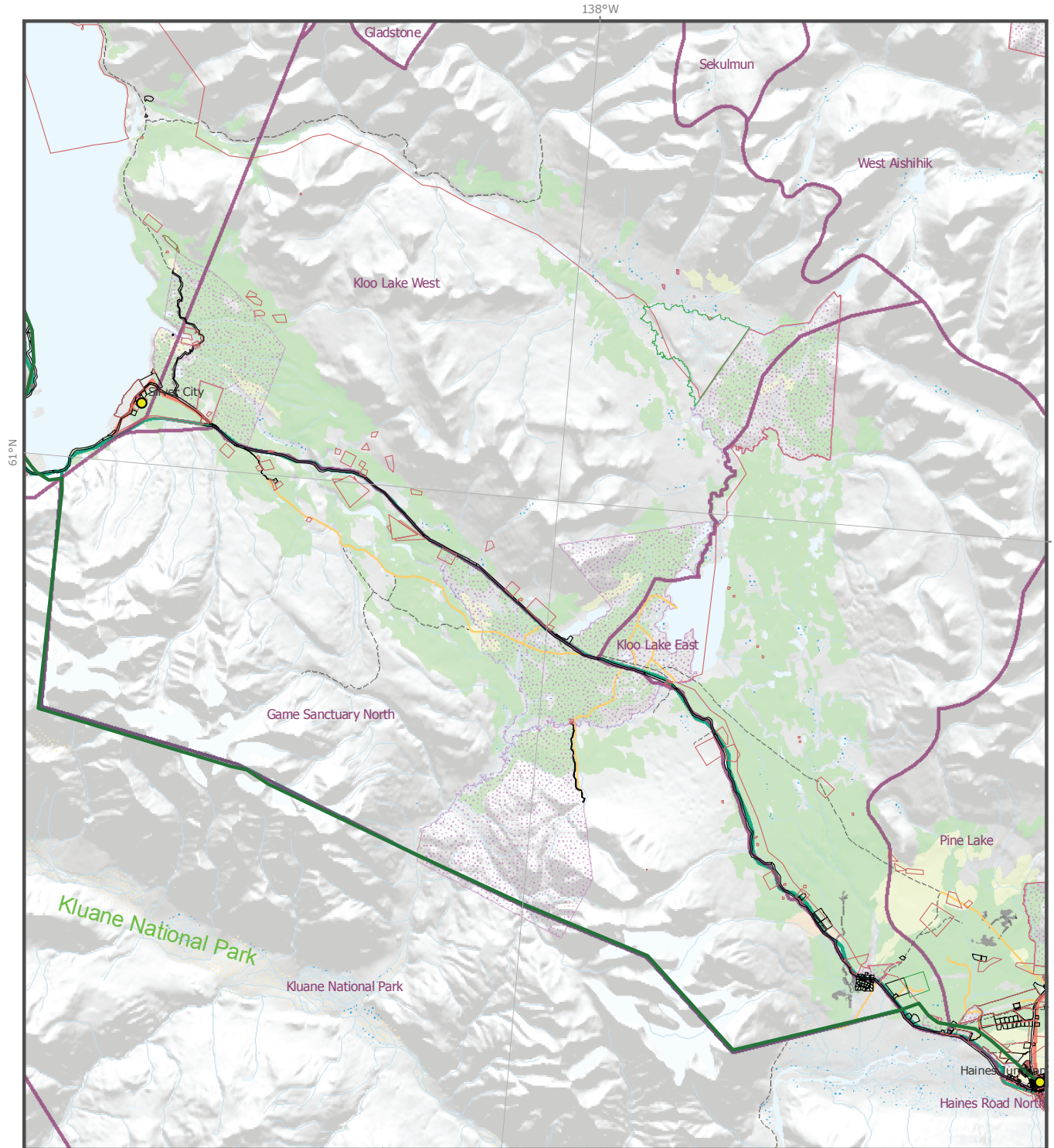
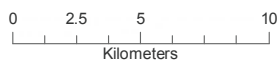


Figure 22:
Forest Cover by Leading Species (Northwest)

**Champagne and Aishihik Traditional Territory
 Integrated Landscape Plan : 2006**

Digital data provided by Yukon Government, Champagne and Aishihik First Nations, Government of Canada, and agencies contracted by the above organizations.



Albers Equal Area Projection

- | | |
|---|---|
| <ul style="list-style-type: none"> ● Communities Kluane National Park & Reserve SFMP Landscape Units CAFN Settlement Lands | <p>Forest Cover - Leading Species</p> <ul style="list-style-type: none"> White Spruce Lodgepole Pine Alpine Fir Black Spruce Balsam Poplar Trembling Aspen White Birch Larch |
| <p>Land Designations</p> <ul style="list-style-type: none"> Protected Areas Pipeline Easement Agricultural Dispositions Land Dispositions Surveyed Lots | |