

6. APPENDIX 3 MAPS

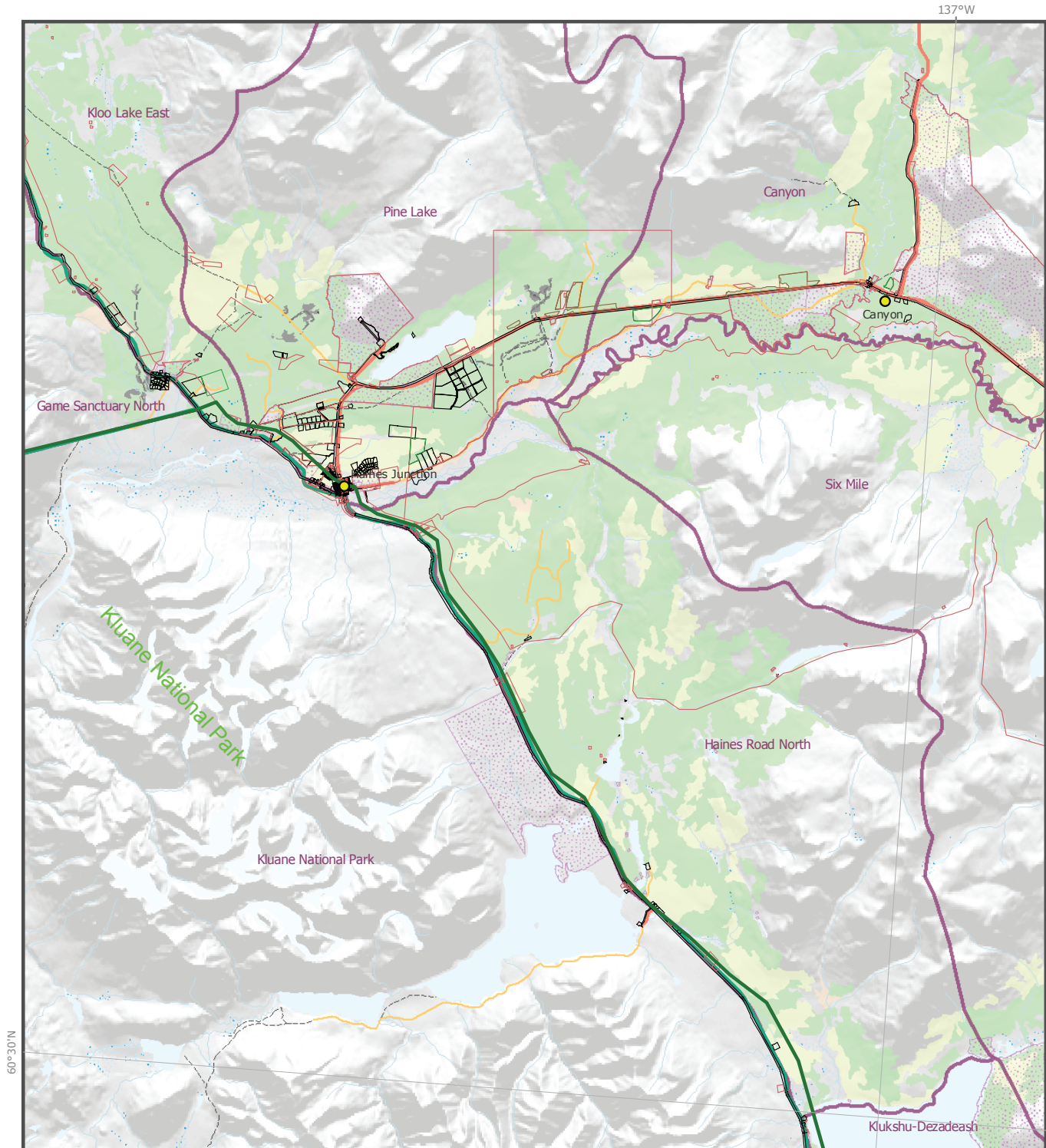


Figure 23:
Forest Cover by Leading Species (Central)

**Champagne and Aishihik Traditional Territory
 Integrated Landscape Plan : 2006**

Digital data provided by Yukon Government, Champagne and Aishihik First Nations, Government of Canada, and agencies contracted by the above organizations.



- | | |
|----------------------------------|---------------------------------------|
| ● Communities | Forest Cover - Leading Species |
| ▭ Kluane National Park & Reserve | ■ White Spruce |
| ▭ SFMP Landscape Units | ■ Lodgepole Pine |
| ▭ CAFN Settlement Lands | ■ Alpine Fir |
| Land Designations | ■ Black Spruce |
| ▭ Protected Areas | ■ Balsam Poplar |
| ▭ Pipeline Easement | ■ Trembling Aspen |
| ▭ Agricultural Dispositions | ■ White Birch |
| ▭ Land Dispositions | ■ Larch |
| ▭ Surveyed Lots | |