

PLAN AND FIELD NOTES OF SURVEY OF
LOTS 1128 AND 1129, QUAD 115 I/1

CARMACKS
 YUKON



THIS SURVEY WAS EXECUTED BETWEEN FEBRUARY 23 AND APRIL 3, 2012,
 BY SYLVAIN LESSARD, C.L.S.

LEGEND :

- Bearings are UTM Grid, derived from the stated bearing 76°37'10" between found CLS '77 Posts marked "2L1091,1998" and "1L1091,R,1998" as shown on F.N. Plan 86246 CLSR, and according to that plan are referred to the central meridian of UTM Zone 8 (135° W.)
- C.L.S. 69 Post found shown thus ●
 - C.L.S. 77 Post found shown thus ●
 - C.L.S. 77 Post placed shown thus ○
 - Lands dealt with by this plan bounded thus ————
 - Traverse lines and stations are shown thus —○—
 - Power poles are shown thus ●
 - Distances are expressed in metres and decimals thereof.
 - UTRM denotes Unable to Read Marks.
 - LSC denotes Little Salmon/Carmacks First Nation.

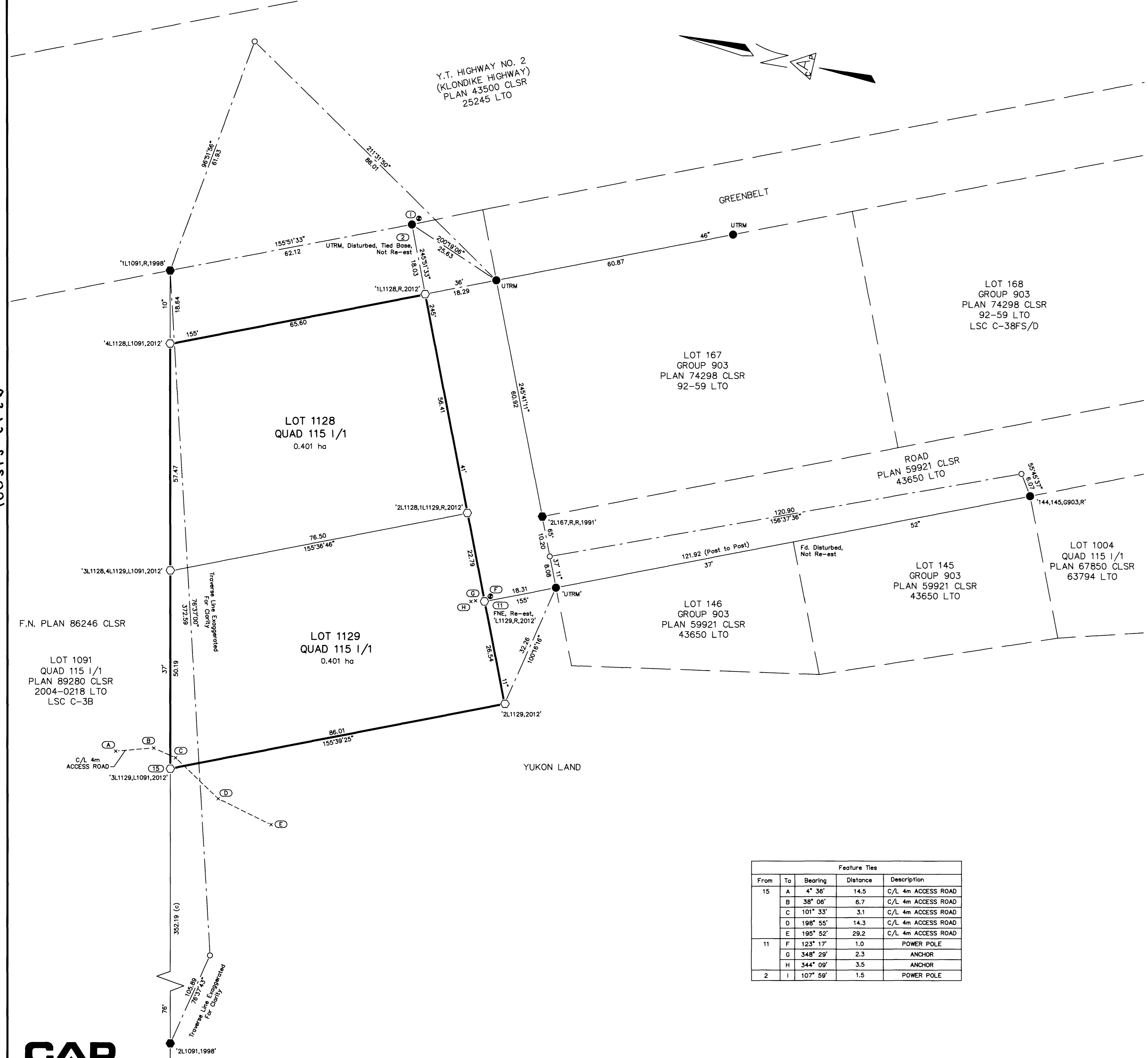
CERTIFIED CORRECT

[Signature]
 SYLVAIN LESSARD, Canada Lands Surveyor
 Date: APR 6 / 12



100312 C526

100312 C526



Feature Ties				
From	To	Bearing	Distance	Description
15	A	4° 36'	14.5	C/L 4m ACCESS ROAD
	B	38° 06'	6.7	C/L 4m ACCESS ROAD
	C	101° 33'	3.1	C/L 4m ACCESS ROAD
	D	198° 55'	14.3	C/L 4m ACCESS ROAD
	E	195° 52'	29.2	C/L 4m ACCESS ROAD
11	F	123° 17'	1.0	POWER POLE
	G	348° 29'	2.3	ANCHOR
	H	344° 09'	3.5	ANCHOR
2	I	107° 59'	1.5	POWER POLE

F.N. PLAN 86246 CLSR

LOT 1091
 QUAD 115 I/1
 PLAN 89280 CLSR
 2004-0218 LTO
 LSC C-3B

LOT 1128
 QUAD 115 I/1
 0.401 ha

LOT 1129
 QUAD 115 I/1
 0.401 ha

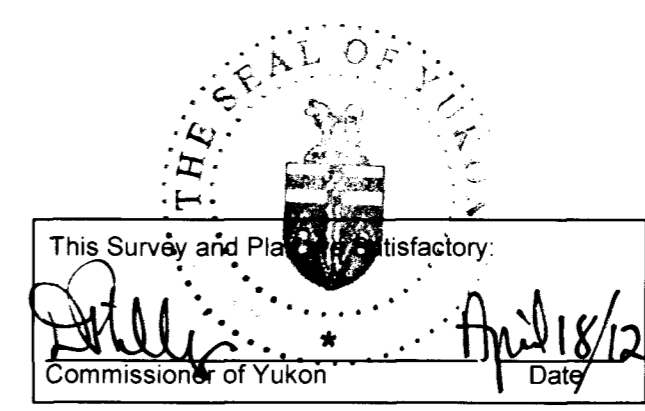
LOT 167
 GROUP 903
 PLAN 74298 CLSR
 92-59 LTO

LOT 168
 GROUP 903
 PLAN 74298 CLSR
 92-59 LTO
 LSC C-38FS/D

ROAD
 PLAN 59921 CLSR
 43650 LTO

LOT 145
 GROUP 903
 PLAN 59921 CLSR
 43650 LTO

LOT 1004
 QUAD 115 I/1
 PLAN 67850 CLSR
 63794 LTO



Department of Natural Resources
 Re: Section 29, Canada Lands Surveys Act
 Confirmed:
[Signature] Apr. 17/12
 Brian Thompson, Head, Cadastral Services
 Yukon, Surveyor General Branch