

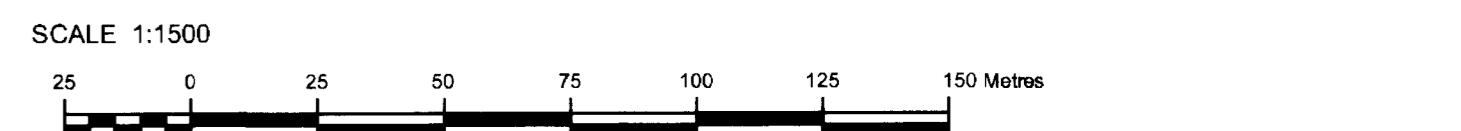
105355 CR26

CANADA LANDS SURVEYS RECORDS
102322
 DATE: October 22, 2013

A copy of this plan is filed in the Land Titles Office at Whitehorse, Yukon as
2013-0091 LTO
 on 24 Oct, 2013 at 10:50
Paul A. Burdidge Registrar

PLAN AND FIELD NOTES OF SURVEY OF
LOTS 15 to 25 and ROAD

Sawmill Road Subdivision
 Teslin
YUKON

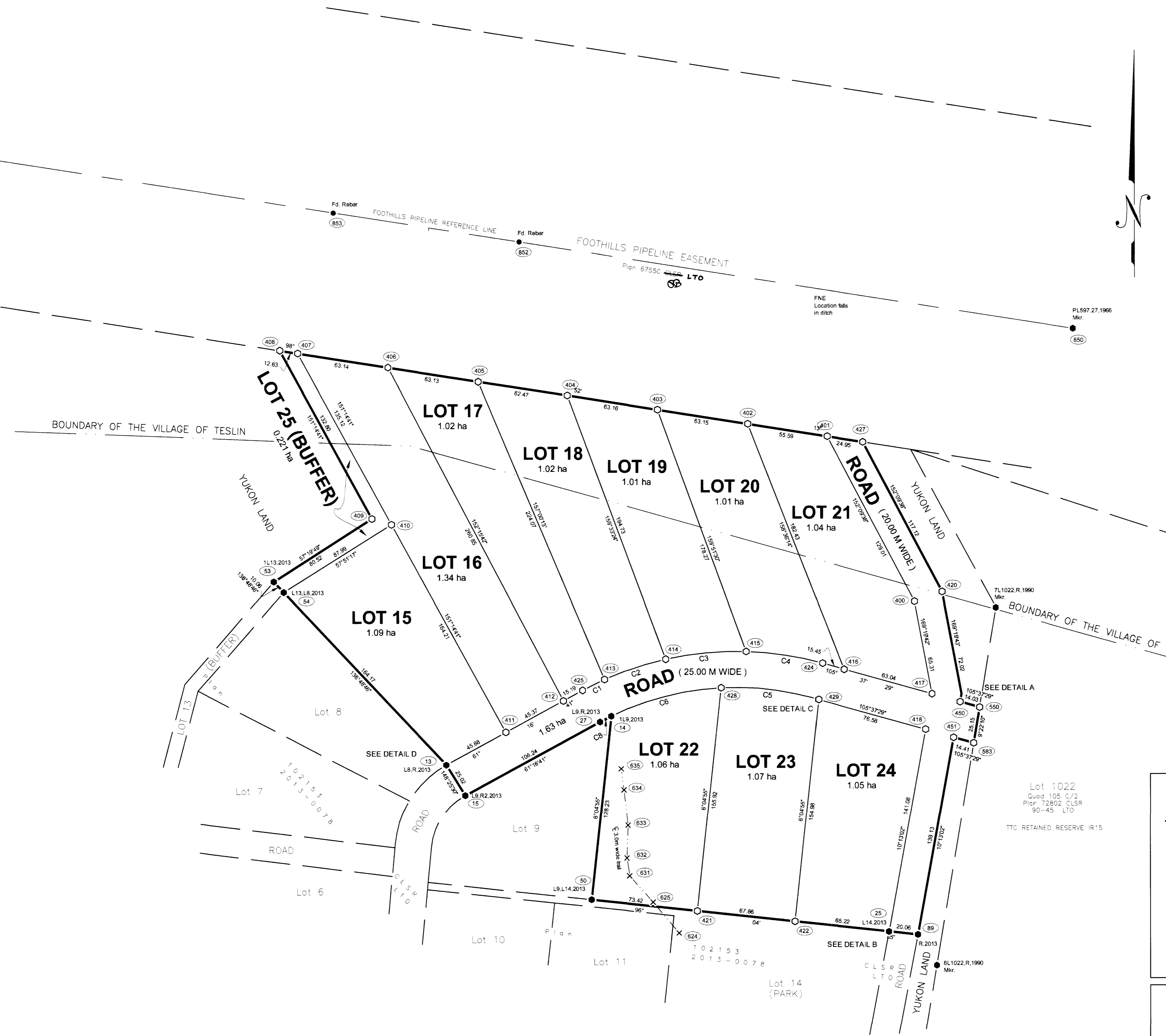
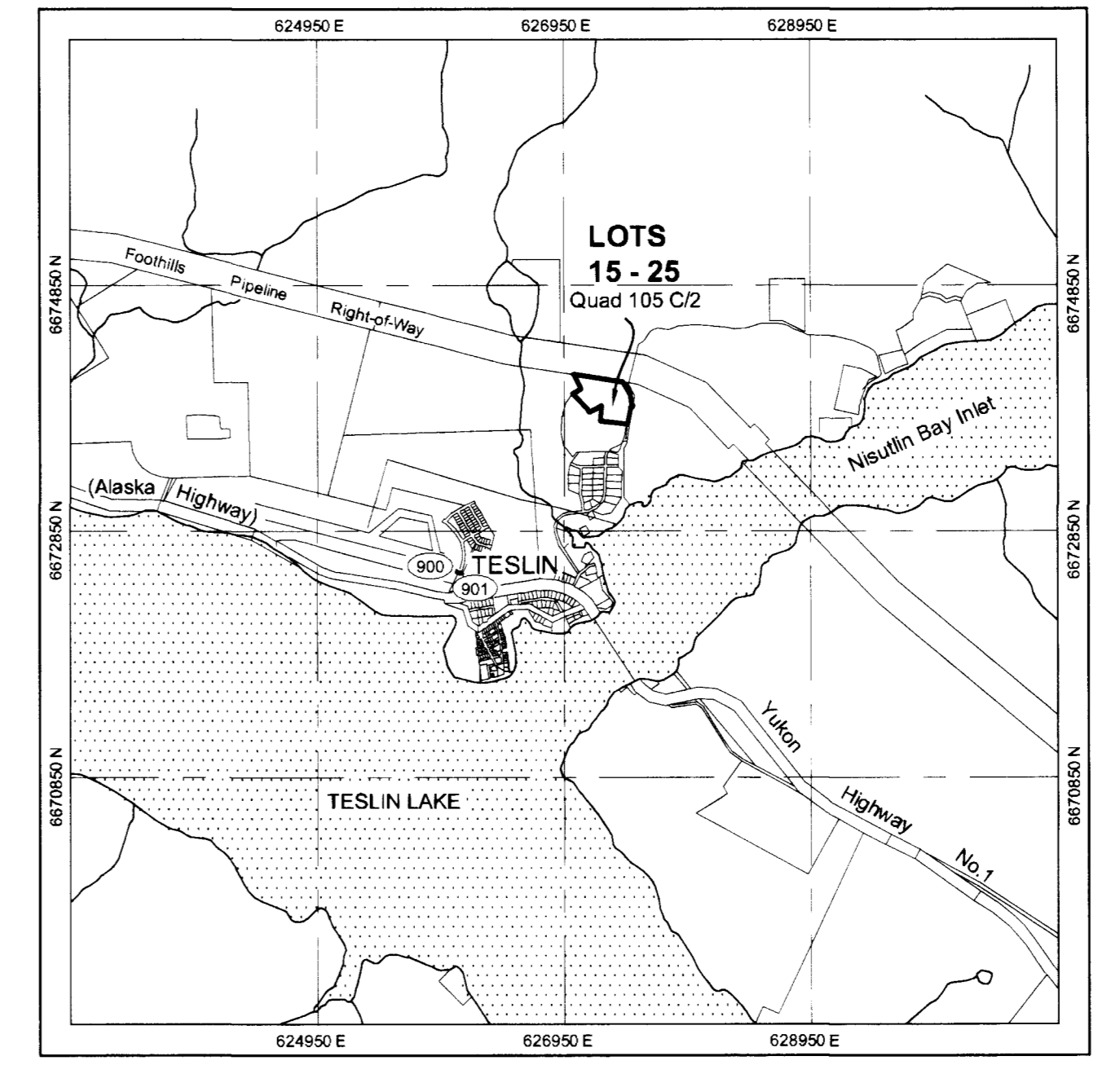


This survey was executed during the period of September 23, 2013 to September 26, 2013 by Paul A. Burdidge CLS.

LEGEND
 Bearings are UTM Grid, derived from Real Time Kinematic GNSS observations and are referred to the central meridian of UTM Zone 8 (135° West Longitude).

- Distances are horizontal at general ground level and are expressed in metres.
- CLS '77 Post found shown thus
- CLS '77 Post placed shown thus
- Topographic ties shown thus
- Found rebar shown thus
- Lands dealt with by this plan bounded thus

GNSS denotes Global Navigation Satellite System
 All posts are marked with the appropriate lot numbers, R for road where applicable, and the year of the survey, 2013.
 TTC denotes Teslin Tlingit Council



CURVE TABLE

CURVE	ARC	RADIUS	CHORD BEARING	CHORD DISTANCE
C1	16.98	221.15	63°28'41"	16.97
C2	44.59	221.15	71°27'13"	44.52
C3	56.18	221.15	84°30'25"	56.03
C4	53.42	221.15	98°42'16"	53.29
C5	63.92	196.15	95°17'20"	63.64
C6	79.00	196.15	75°24'52"	78.47
C7	1.24	70.50	60°46'07"	1.24
C8	8.90	196.15	62°34'39"	8.90

UTM COORDINATES
 NAD83-CSRS (EPOCH 2002) ZONE 8
 CENTRAL MERIDIAN 135° WEST

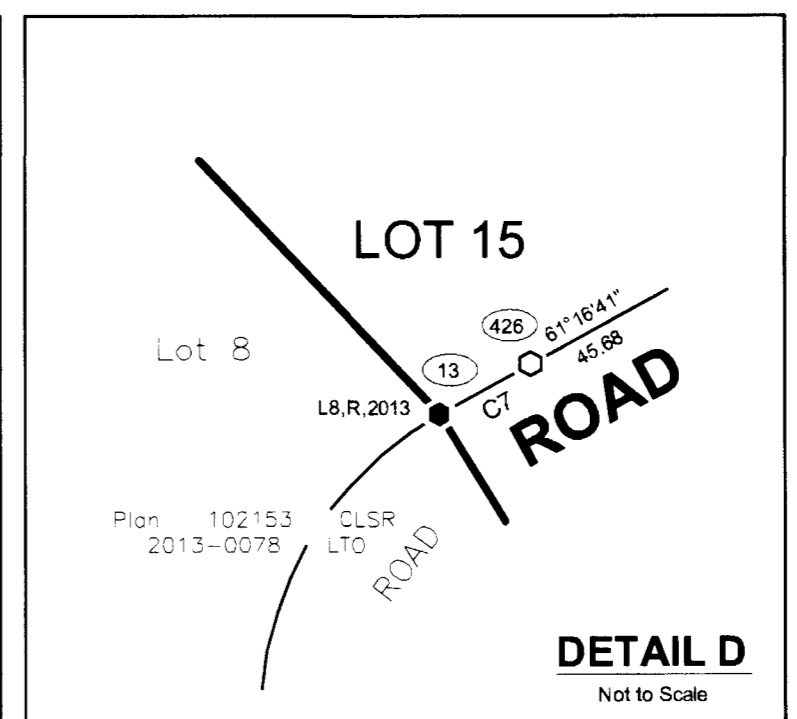
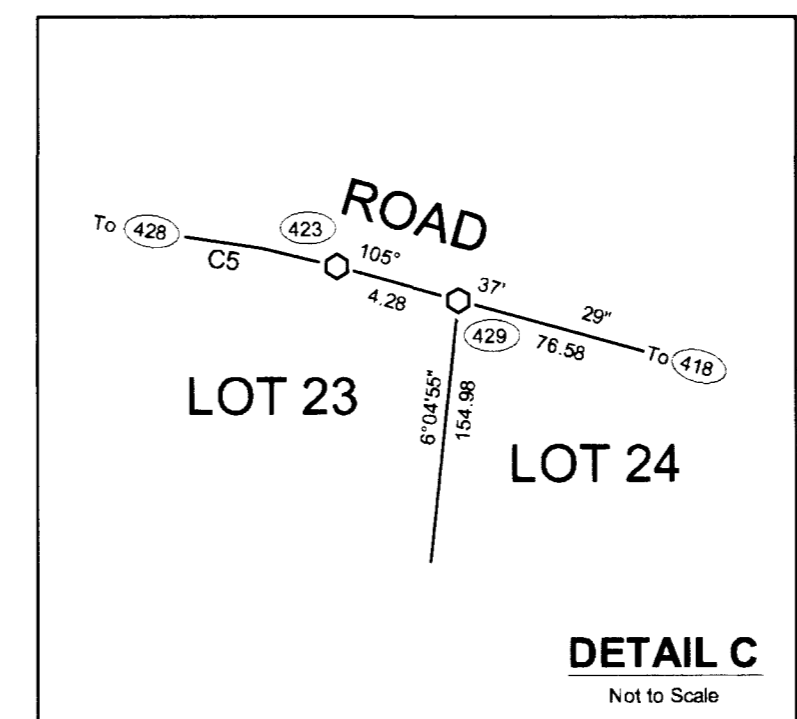
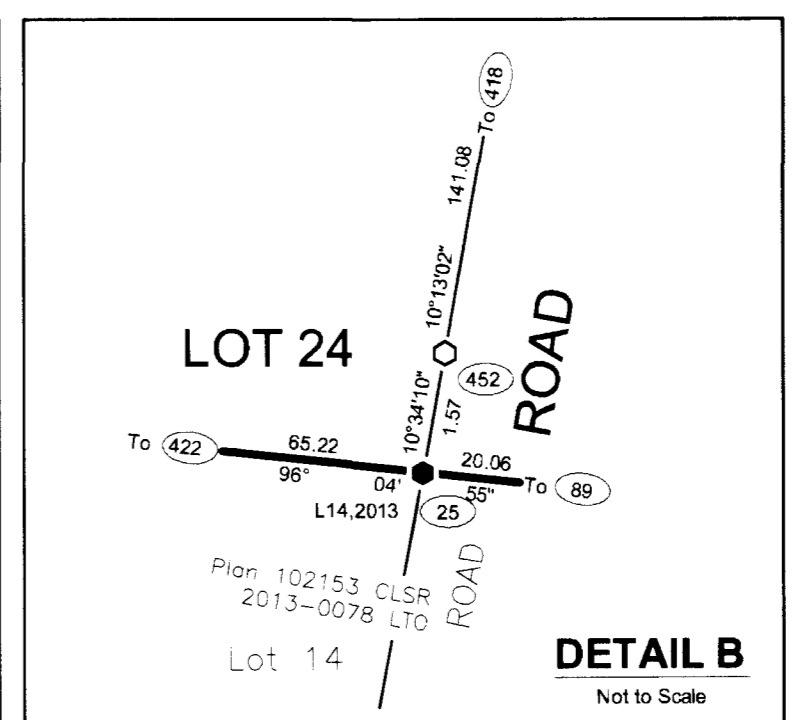
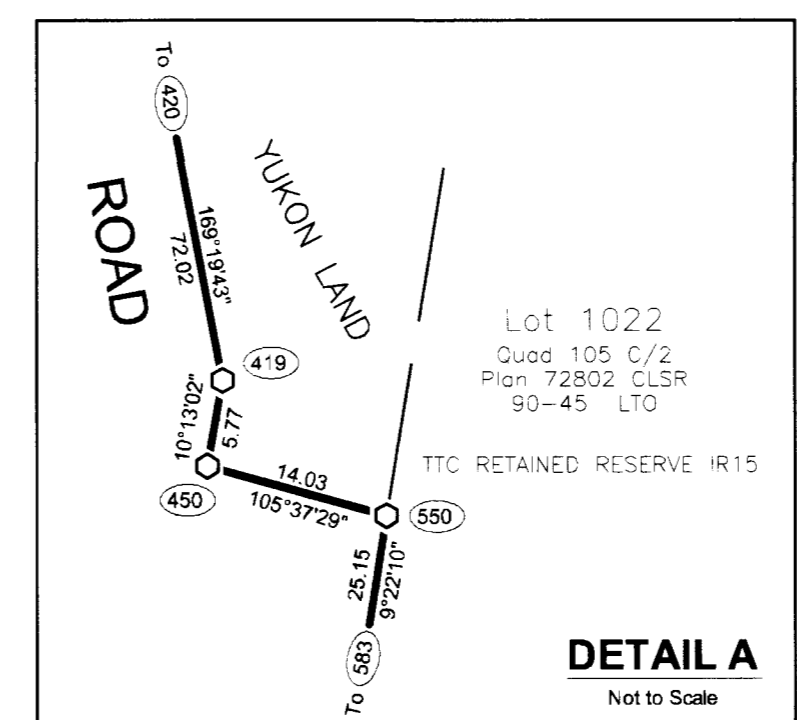
Point	Northing	Easting	Elevation	CSF
900	6672525.258	626072.573	696.592	0.9996849
901	6672512.27	626099.39	696.22	0.9996849

Point	Northing	Easting	Point	Northing	Easting
400	6673957.02	627454.81	418	6673868.15	627462.45
401	6674071.06	627394.58	419	6673892.93	627487.23
402	6674079.63	627339.67	420	6673963.68	627473.90
403	6674089.36	627277.30	421	6673741.89	627304.85
404	6674099.10	627214.92	422	6673734.71	627372.31
405	6674108.73	627153.22	423	6673889.92	627384.60
406	6674118.46	627090.86	424	6673913.99	627391.33
407	6674128.19	627028.50	425	6673894.96	627225.54
408	6674130.14	627016.02	426	6673843.92	627132.41
409	6674013.75	627079.89	427	6674067.21	627419.22
410	6674009.77	627093.48	428	6673896.89	627321.36
411	6673865.86	627172.46	429	6673888.76	627388.72
412	6673887.66	627212.23	450	6673887.26	627486.21
413	6673902.53	627240.72	451	6673862.55	627481.75
414	6673916.69	627282.92	452	6673729.34	627437.43
415	6673922.05	627338.67	850	6674145.73	627564.45
416	6673909.83	627406.20	852	6674205.48	627181.56
417	6673892.85	627466.90	853	6674225.53	627053.10
			854	6674282.66	626687.07

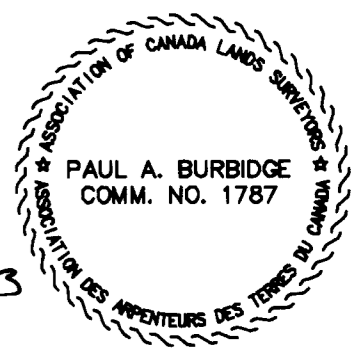
TIES TO FEATURES

Point	Northing	Easting	Description
624	6673726.52	627292.29	
625	6673748.01	627274.30	
631	6673766.30	627258.17	
632	6673778.69	627256.28	Center line of 3.0m wide trail
633	6673801.57	627257.08	
634	6673825.94	627254.05	
635	6673840.46	627252.20	

Coordinates were derived from GNSS Real Time Kinematic observations holding Station 900 fixed.
 The coordinates for Station 900 were derived from the Natural Resources Canada Precise Point Positioning (PPP) Service.
 Elevations are orthometric and are derived using the HTV2.0 geoid model.
 The PPP derived horizontal position of 900 has an uncertainty of 0.02m at the 95% confidence level.
 CSF denotes Combined Scale Factor.



CERTIFIED CORRECT:
Paul A. Burdidge
 PAUL A. BURDIDGE, Canada Lands Surveyor
 Date: October 10/13



Department of Natural Resources
 Re: Section 29, Canada Lands Surveys Act
 CONFIRMED: Oct 22, 2013
Brian Thompson
 Brian Thompson, Head, Cadastral Services
 Yukon, Surveyor General Branch

THIS SURVEY AND PLAN ARE SATISFACTORY
Paul A. Burdidge
 Commissioner of Yukon
 Date: Oct 17/13

105355 CR26