

UTM COORDINATES - NAD83CSRS - ZONE 8

Station	Northing	Easting	Orthometric Elevation	Combined Scale Factor
9387056	6718797.074	503750.446	732.117	0.999484
6301	6721668.149	500260.027	731.322	0.999484
700122	6722363.360	500295.983	724.942	0.999485
700123	6722360.338	499908.191	730.883	0.999484
700124	6722732.086	499724.228	734.956	0.999484
15774	6720819.120	500301.132	733.557	0.999484
15775	6720812.408	500433.117	732.218	0.999484
15776	6720809.583	500631.324	733.033	0.999484
15777	6720808.840	500838.824	733.336	0.999484

Coordinates are derived from a least squares adjustment of GPS observations holding fixed in 3D the values provided by NRCan for stations '6301' and '9387056' and shown in F.B. 36276 C.L.S.R.

UTM COORDINATES NAD83CSRS ZONE 8 AND POST MARKINGS OF MONUMENTS

Post #	Northing	Easting	Post Marking
322	6720824.28	500314.08	R127 RW 2007
323	6720794.40	500316.80	R128 RW 2007
329	6720794.63	500414.13	R81 RW 2007
330	6720792.49	500352.79	R128 RW 2007
331	6720822.33	500386.94	R128 RW 2007
332	6720774.82	500561.42	R128 RW 2007
333	6720774.82	500561.42	R128 RW 2007
334	6720774.82	500561.42	R128 RW 2007
335	6720774.82	500561.42	R128 RW 2007
336	6720774.82	500561.42	R128 RW 2007
337	6720774.82	500561.42	R128 RW 2007
338	6720774.82	500561.42	R128 RW 2007
339	6720774.82	500561.42	R128 RW 2007
340	6720774.82	500561.42	R128 RW 2007
341	6720774.82	500561.42	R128 RW 2007
342	6720774.82	500561.42	R128 RW 2007
343	6720774.82	500561.42	R128 RW 2007
344	6720774.82	500561.42	R128 RW 2007
345	6720774.82	500561.42	R128 RW 2007
346	6720774.82	500561.42	R128 RW 2007
347	6720774.82	500561.42	R128 RW 2007
348	6720774.82	500561.42	R128 RW 2007
349	6720774.82	500561.42	R128 RW 2007
350	6720774.82	500561.42	R128 RW 2007
351	6720774.82	500561.42	R128 RW 2007
352	6720774.82	500561.42	R128 RW 2007
353	6720774.82	500561.42	R128 RW 2007
354	6720774.82	500561.42	R128 RW 2007
355	6720774.82	500561.42	R128 RW 2007
356	6720774.82	500561.42	R128 RW 2007
357	6720774.82	500561.42	R128 RW 2007
358	6720774.82	500561.42	R128 RW 2007
359	6720774.82	500561.42	R128 RW 2007
360	6720774.82	500561.42	R128 RW 2007
361	6720774.82	500561.42	R128 RW 2007
362	6720774.82	500561.42	R128 RW 2007
363	6720774.82	500561.42	R128 RW 2007
364	6720774.82	500561.42	R128 RW 2007
365	6720774.82	500561.42	R128 RW 2007
366	6720774.82	500561.42	R128 RW 2007
367	6720774.82	500561.42	R128 RW 2007
368	6720774.82	500561.42	R128 RW 2007
369	6720774.82	500561.42	R128 RW 2007
370	6720774.82	500561.42	R128 RW 2007
371	6720774.82	500561.42	R128 RW 2007
372	6720774.82	500561.42	R128 RW 2007
373	6720774.82	500561.42	R128 RW 2007
374	6720774.82	500561.42	R128 RW 2007
375	6720774.82	500561.42	R128 RW 2007
376	6720774.82	500561.42	R128 RW 2007
377	6720774.82	500561.42	R128 RW 2007
378	6720774.82	500561.42	R128 RW 2007
379	6720774.82	500561.42	R128 RW 2007
380	6720774.82	500561.42	R128 RW 2007
381	6720774.82	500561.42	R128 RW 2007
382	6720774.82	500561.42	R128 RW 2007
383	6720774.82	500561.42	R128 RW 2007
384	6720774.82	500561.42	R128 RW 2007
385	6720774.82	500561.42	R128 RW 2007
386	6720774.82	500561.42	R128 RW 2007
387	6720774.82	500561.42	R128 RW 2007
388	6720774.82	500561.42	R128 RW 2007
389	6720774.82	500561.42	R128 RW 2007
390	6720774.82	500561.42	R128 RW 2007
391	6720774.82	500561.42	R128 RW 2007
392	6720774.82	500561.42	R128 RW 2007
393	6720774.82	500561.42	R128 RW 2007
394	6720774.82	500561.42	R128 RW 2007
395	6720774.82	500561.42	R128 RW 2007
396	6720774.82	500561.42	R128 RW 2007
397	6720774.82	500561.42	R128 RW 2007
398	6720774.82	500561.42	R128 RW 2007
399	6720774.82	500561.42	R128 RW 2007
400	6720774.82	500561.42	R128 RW 2007
401	6720774.82	500561.42	R128 RW 2007
402	6720774.82	500561.42	R128 RW 2007
403	6720774.82	500561.42	R128 RW 2007
404	6720774.82	500561.42	R128 RW 2007
405	6720774.82	500561.42	R128 RW 2007
406	6720774.82	500561.42	R128 RW 2007
407	6720774.82	500561.42	R128 RW 2007
408	6720774.82	500561.42	R128 RW 2007
409	6720774.82	500561.42	R128 RW 2007
410	6720774.82	500561.42	R128 RW 2007
411	6720774.82	500561.42	R128 RW 2007
412	6720774.82	500561.42	R128 RW 2007
413	6720774.82	500561.42	R128 RW 2007
414	6720774.82	500561.42	R128 RW 2007
415	6720774.82	500561.42	R128 RW 2007
416	6720774.82	500561.42	R128 RW 2007
417	6720774.82	500561.42	R128 RW 2007
418	6720774.82	500561.42	R128 RW 2007
419	6720774.82	500561.42	R128 RW 2007
420	6720774.82	500561.42	R128 RW 2007
421	6720774.82	500561.42	R128 RW 2007
422	6720774.82	500561.42	R128 RW 2007
423	6720774.82	500561.42	R128 RW 2007
424	6720774.82	500561.42	R128 RW 2007
425	6720774.82	500561.42	R128 RW 2007
426	6720774.82	500561.42	R128 RW 2007
427	6720774.82	500561.42	R128 RW 2007
428	6720774.82	500561.42	R128 RW 2007
429	6720774.82	500561.42	R128 RW 2007
430	6720774.82	500561.42	R128 RW 2007
431	6720774.82	500561.42	R128 RW 2007
432	6720774.82	500561.42	R128 RW 2007
433	6720774.82	500561.42	R128 RW 2007
434	6720774.82	500561.42	R128 RW 2007
435	6720774.82	500561.42	R128 RW 2007
436	6720774.82	500561.42	R128 RW 2007
437	6720774.82	500561.42	R128 RW 2007
438	6720774.82	500561.42	R128 RW 2007
439	6720774.82	500561.42	R128 RW 2007
440	6720774.82	500561.42	R128 RW 2007
441	6720774.82	500561.42	R128 RW 2007
442	6720774.82	500561.42	R128 RW 2007
443	6720774.82	500561.42	R128 RW 2007
444	6720774.82	500561.42	R128 RW 2007
445	6720774.82	500561.42	R128 RW 2007
446	6720774.82	500561.42	R128 RW 2007
447	6720774.82	500561.42	R128 RW 2007
448	6720774.82	500561.42	R128 RW 2007
449	6720774.82	500561.42	R128 RW 2007
450	6720774.82	500561.42	R128 RW 2007
451	6720774.82	500561.42	R128 RW 2007
452	6720774.82	500561.42	R128 RW 2007
453	6720774.82	500561.42	R128 RW 2007
454	6720774.82	500561.42	R128 RW 2007
455	6720774.82	500561.42	R128 RW 2007
456	6720774.82	500561.42	R128 RW 2007
457	6720774.82	500561.42	R128 RW 2007
458	6720774.82	500561.42	R128 RW 2007
459	6720774.82	500561.42	R128 RW 2007
460	6720774.82	500561.42	R128 RW 2007
461	6720774.82	500561.42	R128 RW 2007
462	6720774.82	500561.42	R128 RW 2007
463	6720774.82	500561.42	R128 RW 2007
464	6720774.82	500561.42	R128 RW 2007
465	6720774.82	500561.42	R128 RW 2007
466	6720774.82	500561.42	R128 RW 2007
467	6720774.82	500561.42	R128 RW 2007
468	6720774.82	500561.42	R128 RW 2007
469	6720774.82	500561.42	R128 RW 2007
470	6720774.82	500561.42	R128 RW 2007
471	6720774.82	500561.42	R128 RW 2007
472	6720774.82	500561.42	R128 RW 2007
473	6720774.82	500561.42	R128 RW 2007
474	6720774.82	500561.42	R128 RW 2007
475	6720774.82	500561.42	R128 RW 2007
476	6720774.82	500561.42	R128 RW 2007
477	6720774.82	500561.42	R128 RW 2007
478	6720774.82	500561.42	R128 RW 2007
479	6720774.82	500561.42	R128 RW 2007
480	6720774.82	500561.42	R128 RW 2007
481	6720774.82	500561.42	R128 RW 2007
482	6720774.82	500561.42	R128 RW 2007
483	6720774.82	500561.42	R128 RW 2007
484	6720774.82	500561.42	R128 RW 2007
485	6720774.82	500561.42	R128 RW 2007
486	6720774.82	500561.42	R128 RW 2007
487	6720774.82	500561.42	R128 RW 2007
488	6720774.82	500561.42	R128 RW 2007
489	6720774.82	500561.42	R128 RW 2007
490	6720774.82	500561.42	R128 RW 2007
491	6720774.82	500561.42	R128 RW 2007
492	6720774.82	500561.42	R128 RW 2007
493	6720774.82	500561.42	R128 RW 2007
494	6720774.82	500561.42	R128 RW 2007
495	6720774.82	500561.42	R128 RW 2007
496	6720774.82	500561.42	R128 RW 2007
497	6720774.82	500561.42	R128 RW 2007
498	6720774.82	500561.42	R128 RW 2007
499	6720774.82	500561.42	R128 RW 2007
500	6720774.82	500561.42	R128 RW 2007

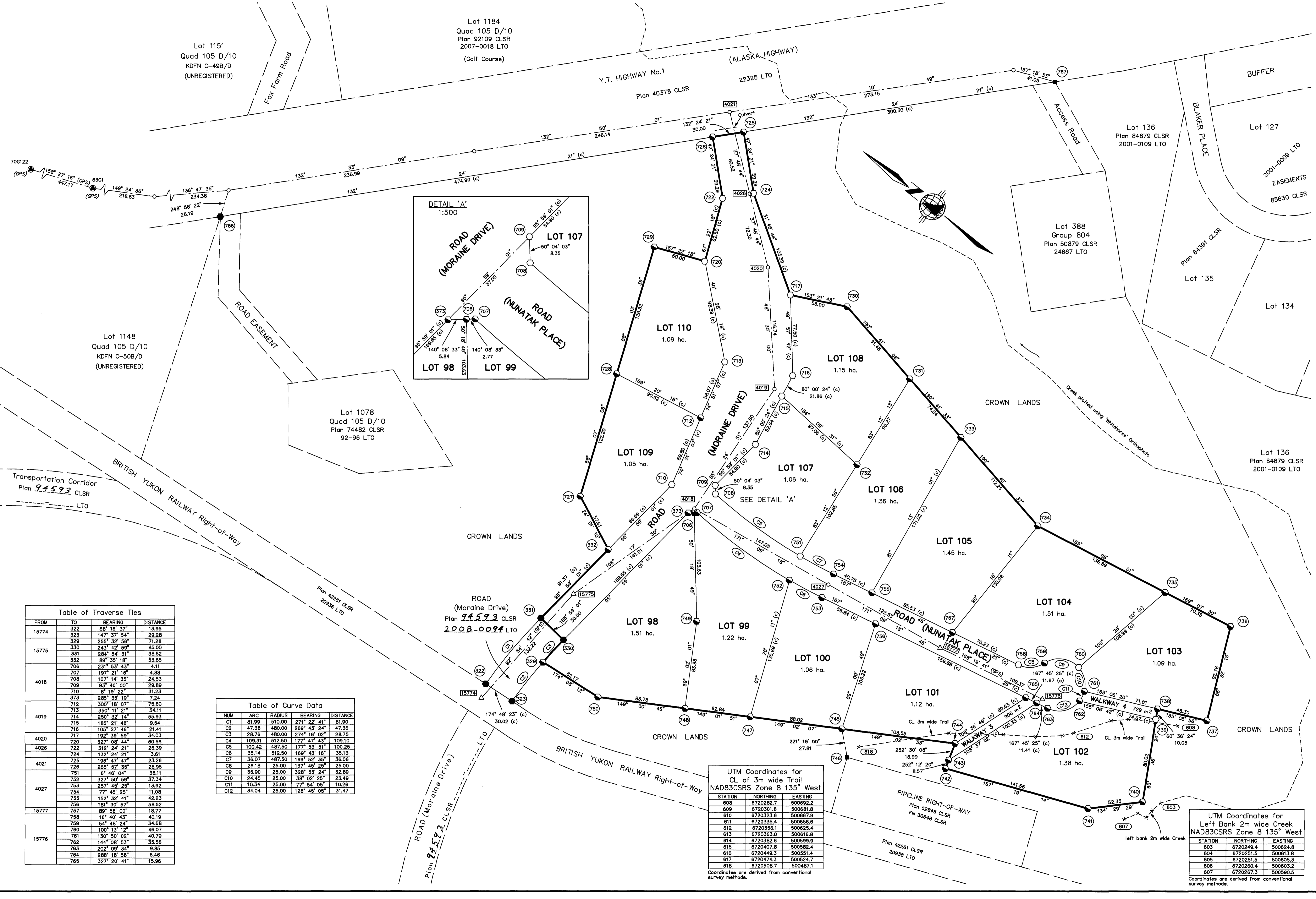


Table of Traverse Ties

FROM	TO	BEARING	DISTANCE
15774	322	88° 16' 37"	13.95
	323	147° 37' 54"	26.28
15775	330	243° 42' 59"	45.00
	331	284° 54' 31"	38.52
	332	89° 35' 18"	53.65
	706	231° 53' 43"	4.11
	707	197° 21' 16"	4.88
	708	10	