

# Yukon Mines Since 1960 and ELECTRICAL INFRASTRUCTURE

## Infrastructure

### Electrical Infrastructure

- Diesel Generating Station
- ▲ Hydroelectric Generating Station
- 138 kv Transmission Line
- <138 kv Transmission Line
- ▲ Known Potential Hydroelectric Sites:
  - ▲ Small (1-20 MW)
  - ▲ Mid-Size (20-100 MW)
  - ▲ Large (100+ MW)

### Other Infrastructure

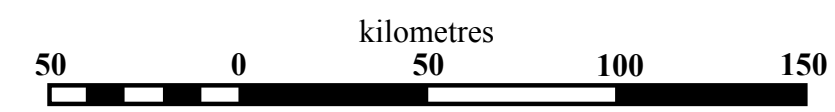
- All Season Highway
- - - Seasonal Road

### Distance from Grid

- 25 km
- 50 km

## Mineral Occurrences

- ⊗ Mines
- Major Mineral Deposit
  - ◇ Silver
  - ◇ Gold
  - Coal
  - Copper
  - Iron
  - Nickel
  - Other
  - Lead-Zinc
  - Tungsten



Scale 1:2,000,000

Yukon Albers Equal Area Projection

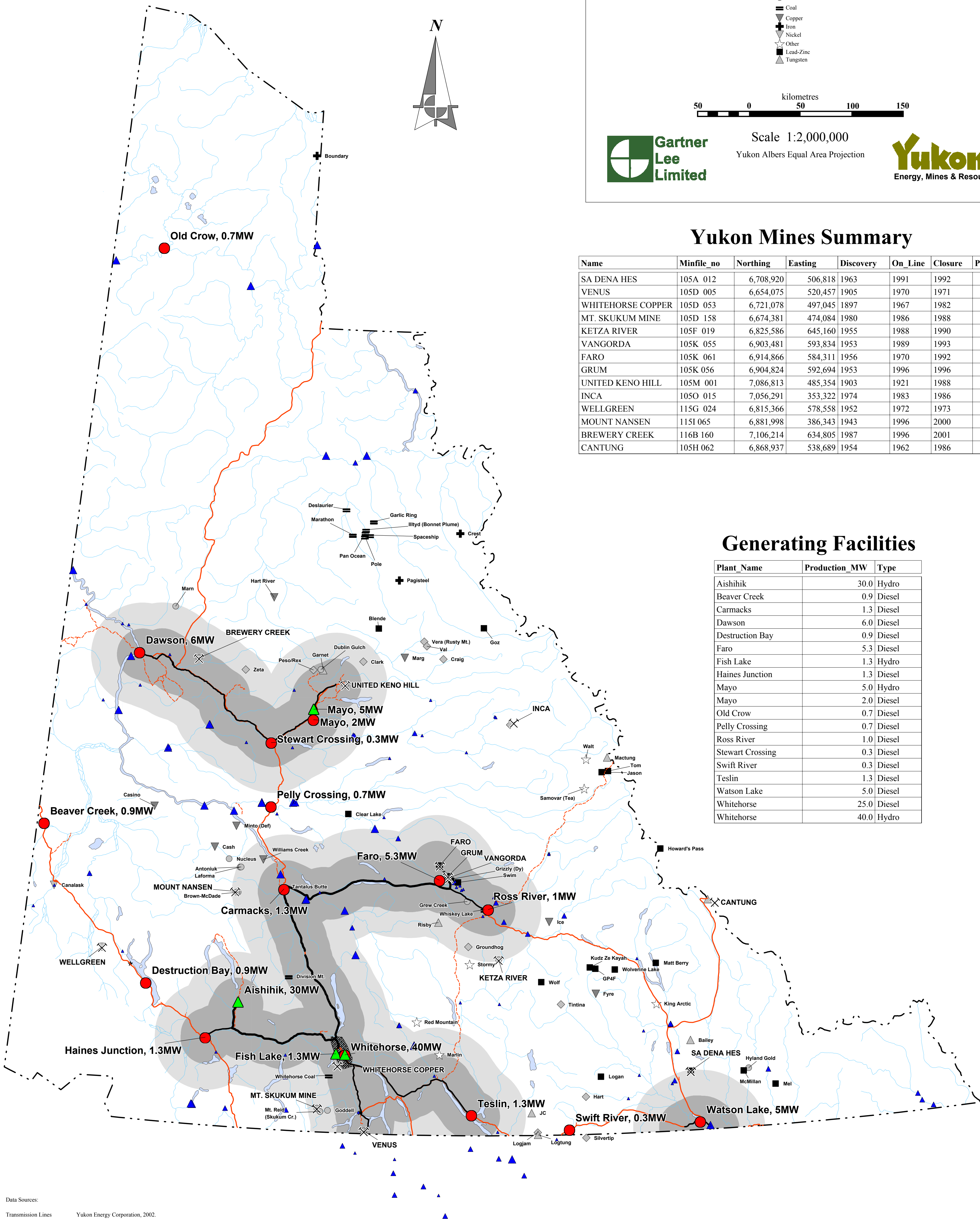


## Yukon Mines Summary

Name	Minfile_no	Northing	Easting	Discovery	On_Line	Closure	Power
SA DENA HES	105A 012	6,708,920	506,818	1963	1991	1992	0.0
VENUS	105D 005	6,654,075	520,457	1905	1970	1971	2.0
WHITEHORSE COPPER	105D 053	6,721,078	497,045	1897	1967	1982	6.0
MT. SKUKUM MINE	105D 158	6,674,381	474,084	1980	1986	1988	3.0
KETZA RIVER	105F 019	6,825,586	645,160	1955	1988	1990	3.0
VANGORDA	105K 055	6,903,481	593,834	1953	1989	1993	22.0
FARO	105K 061	6,914,866	584,311	1956	1970	1992	24.0
GRUM	105K 056	6,904,824	592,694	1953	1996	1996	22.0
UNITED KENO HILL	105M 001	7,086,813	485,354	1903	1921	1988	4.0
INCA	105O 015	7,056,291	353,322	1974	1983	1986	0.0
WELLGREEN	115G 024	6,815,366	578,558	1952	1972	1973	0.0
MOUNT NANSEN	115I 065	6,881,998	386,343	1943	1996	2000	2.0
BREWERY CREEK	116B 160	7,106,214	634,805	1987	1996	2001	3.0
CANTUNG	105H 062	6,868,937	538,689	1954	1962	1986	4.4

## Generating Facilities

Plant Name	Production MW	Type
Aishihik	30.0	Hydro
Beaver Creek	0.9	Diesel
Carmacks	1.3	Diesel
Dawson	6.0	Diesel
Destruction Bay	0.9	Diesel
Faro	5.3	Diesel
Fish Lake	1.3	Hydro
Haines Junction	1.3	Diesel
Mayo	5.0	Hydro
Mayo	2.0	Diesel
Old Crow	0.7	Diesel
Pelly Crossing	0.7	Diesel
Ross River	1.0	Diesel
Stewart Crossing	0.3	Diesel
Swift River	0.3	Diesel
Teslin	1.3	Diesel
Watson Lake	5.0	Diesel
Whitehorse	25.0	Diesel
Whitehorse	40.0	Hydro



Data Sources:  
 Transmission Lines & Electrical Infrastructure: Yukon Energy Corporation, 2002.  
 Major Mineral Deposits: Economic Development, Government of Yukon, January 2002; Yukon Mineral Deposits, Whitehorse, Yukon.  
 Mineral Occurrences: Indian and Northern Affairs Canada, 1999; Yukon Minfile, a database of mineral occurrences in Yukon.