



ALEXCO

EMERGENCY RESPONSE PLAN

QML-0009

November 2009

BELLEKENO PROJECT



ACCESS
CONSULTING GROUP



ALEXCO

EMERGENCY RESPONSE PLAN

QML-0009

November 2009

BELLEKENO PROJECT



ACCESS
CONSULTING GROUP

Keno Hill Project
EMERGENCY RESPONSE PLAN

Effective: November 30, 2009
Projected Revision: January 1, 2010



ALEXCO

Managing Risk – Unlocking Value

Keno Hill Project
EMERGENCY RESPONSE PLAN

Effective: November 30, 2009
Projected Revision: January 1, 2010



This controlled document will be regularly updated to reflect revisions.

- Updated Emergency Management Response Plan (EMRP) documents will be bound and distributed to all authorized personnel.
- All Keno Hill Project personnel must have EMRP training and know where to gain access to the document in the event of an emergency.

Authorized Distribution / Location List:

Alexco Resource Corp. - Keno Hill Property:

Administration Office
Bellekeno East Shifters Office
Care & Maintenance Shop
First Aid Room
General Managers Workspace
Kitchen Medical Station
Mine Rescue Shed – Bellekeno East
Safety Coordinators Office

Alexco Resource Corp. - :

Access Consulting Group Whitehorse Office
Alexco Resource Corp. Vancouver Office
Alexco Resource Corp. Whitehorse Office

Community:

Mayo Nursing Station
Mayo RCMP Detachment
Mayo Fire Department

Government:

Occupational Health & Safety - YWCHSB

Primary Partners On-site Contractors:

First Nation Na-Cho Nyak Dun – Mayo
Procon Mining and Tunneling Corporate Office

Keno Hill Project
EMERGENCY RESPONSE PLAN

Effective: November 30, 2009
Projected Revision: January 1, 2010



CONTENTS:

1.0 PURPOSE.....	5
2.0 DEFINITIONS	5
• 2.1 “SERIOUS INCIDENT”	5
• 2.2 “SERIOUS INJURY” AND “SERIOUS ACCIDENT” UNDER OH&S ACT.....	6
3.0 INITIAL RESPONSE TO SERIOUS INCIDENT - KENO HILL MINES	8
4.0 FOLLOW-UP TO SERIOUS INCIDENT.....	9
5.0 RESPONSIBILITY MATRIX.....	10
6.0 CONTACTS FOR SITE PERSONNEL.....	11
7.0 EXTERNAL RESOURCE CONTACTS.....	12
8.0 UNDERGROUND EMERGENCY ACTION PLAN	13
• 8.1 REPORTING THE EMERGENCY.....	14
• 8.2 FIRE	15
• 8.3 EMERGENCY WARNING RESPONSE	16
• 8.4 MEDICAL PERSONNEL	17
• 8.5 REFUGE CHAMBER BARACADING.....	18
• 8.6 MINE VENTILATION CONTROLS.....	20
• 8.7 MINE OUTAGE PLAN.....	20
9.0 MINE RESCUE	22
10.0 REPORTABLE SPILL QUANTITIES	23
11.0 SPILL RESPONSE EQUIPMENT RESOURCE LIST.....	25
12.0 MISSING PERSONS ACTION PLAN.....	26
13.0 EMERGENCY EQUIPMENT AND EQUIPMENT LOCATIONS.....	27
14.0 EMERGENCY FIRST AID PATIENT ASSESSMENT MODEL.....	28

Keno Hill Project
EMERGENCY RESPONSE PLAN

Effective: November 30, 2009
Projected Revision: January 1, 2010



15.0 CONTACTS - KENO HILL..... 29

- **15.1 KENO HILL PROJECT..... 29**
- **15.2 KENO HILL PROJECT – DEPARTMENT MANAGERS 30**
- **15.3 FIRST AID, HEALTH & SAFETY DEPARTMENT 30**
- **15.4 ALTERNATE KENO HILL PROJECT – DEPARTMENT MANAGERS..... 31**
- **15.5 REPORTING FOR “SERIOUS” INCIDENTS, INJURIES, OR
ACCIDENTS 32**
- **15.6 RADIO COMMUNICATION..... 32**
- **15.7 EMERGENCY MEDIVAC TRANSPORTATION 33**
- **15.8 KENO HILL SURFACE TEAM 34**
- **15.9 COOPERATIVE KENO HILL MINE RESCUE 34**
- **15.10 TERRITORIAL AND FEDERAL CONTACT NUMBERS 35**

Keno Hill Project
EMERGENCY RESPONSE PLAN

Effective: November 30, 2009
Projected Revision: January 1, 2010



1.0 PURPOSE

This guide sets out the response protocol in the event of a “Serious Incident” as defined in the following section.

It is intended for use as a quick reference handbook for managers and supervisors. Incident reporting and investigating is also outlined.

In an emergency situation it is imperative that due diligence is exercised as well as discretion. The priorities are the protection of **LIFE, LIMB and PROPERTY** – in that order.

2.0 DEFINITIONS

2.1 “SERIOUS INCIDENT”

A “**Serious Incident**” is defined as any occurrence meeting one or more of the following criteria:

1. Any “serious injury” or “serious accident” as defined in OH&S 33(1) (see Section 2.2),
2. Any incident requiring first aid or rescue response to the scene,
3. Any fire requiring discharge of a fire extinguisher,
4. Any release of mill process solution outside of containment,
5. Any release of a hazardous product where there is potential for that product to enter a waterway,
6. Any hazardous product spill of reportable volume, as defined in Section 11.0.

Keno Hill Project
EMERGENCY RESPONSE PLAN

Effective: November 30, 2009
Projected Revision: January 1, 2010



2.2 “SERIOUS INJURY” AND “SERIOUS ACCIDENT” UNDER OH&S ACT

(Excerpt from Occupational Health & Safety Act)

33. (1) In this section,

“Serious Injury” means:

- a) an injury that results in death,
- b) fracture of a major bone, including the skull, the spine, the pelvis, or the thighbone,
- c) amputation other than of a finger or toe,
- d) loss of sight of an eye,
- e) internal bleeding,
- f) full thickness (third degree) burns,
- g) dysfunction that results from concussion, electrical contact, lack of oxygen, or poisoning, or
- h) an injury that results in paralysis (permanent loss of function);

“Serious Accident” means:

- (a) an uncontrolled explosion,
- (b) failure of a safety device on a hoist, hoist mechanism, or hoist rope,
- (c) collapse or upset of a crane
- (d) collapse or failure of a load-bearing component of a building or structure regardless of whether the building or structure is complete or under construction,
- (e) collapse or failure of a temporary support structure,

Keno Hill Project
EMERGENCY RESPONSE PLAN

Effective: November 30, 2009
Projected Revision: January 1, 2010



- (f) an inrush of water in an underground working,
- (g) fire or explosion in an underground working,
- (h) collapse or cave-in, of a trench, excavation wall, underground working, or stockpile,
- (i) accidental release of a controlled product,
- (j) brake failure on mobile equipment that causes a runaway,
- (k) any accident that likely would have caused serious injury but for safety precautions, rescue measures, or chance. (As amended by SY 1988, c.22, s. 5; SY 1989, c. 19, s.6)

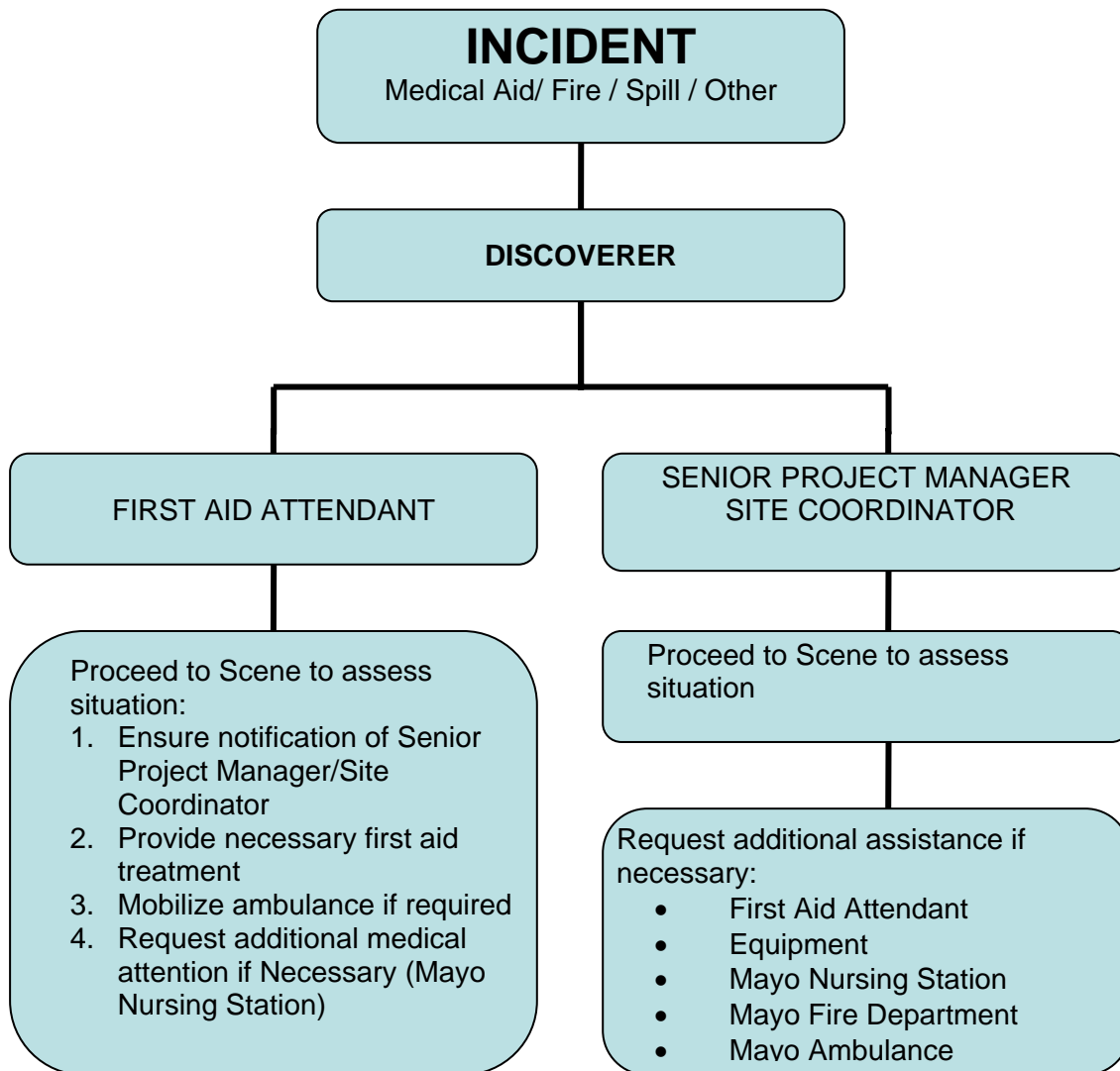
Reprinted from "Occupational Health and Safety with Mine Safety Regulations."
Yukon Workers' Compensation Health and Safety Board. Department of Justice, Government of the Yukon. 1992

Keno Hill Project
EMERGENCY RESPONSE PLAN

Effective: November 30, 2009
Projected Revision: January 1, 2010



3.0 INITIAL RESPONSE TO SERIOUS INCIDENT - KENO HILL PROJECT

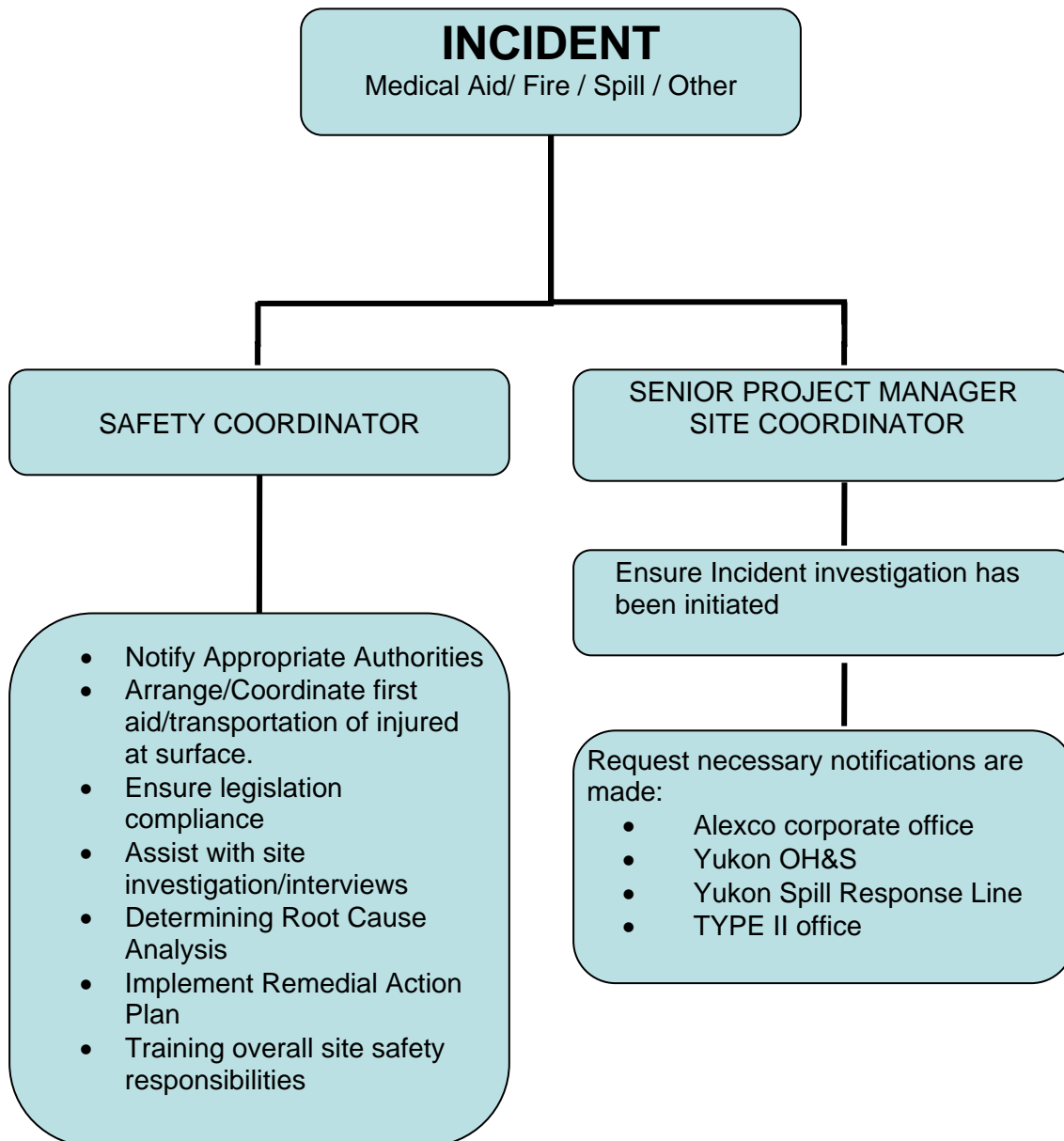


Keno Hill Project
EMERGENCY RESPONSE PLAN

Effective: November 30, 2009
Projected Revision: January 1, 2010



4.0 FOLLOW UP TO SERIOUS INCIDENT - KENO HILL PROJECT



Keno Hill Project
EMERGENCY RESPONSE PLAN

Effective: November 30, 2009
Projected Revision: January 1, 2010



5.0 SERIOUS INCIDENT RESPONSIBILITY MATRIX

POSITION	RESPONSIBILITIES
Area Supervisor Site Coordinator	<ul style="list-style-type: none"> • Coordinate initial response • E.R.T. and specialized resources mobilization & consultation • Attend and coordinate response for all incidents involving “serious injury” and “serious accident”, as defined in Sec. 33, OHS Act • Initial scene control • Responsible for investigation – determine contributing causes and take immediate proactive action • Request additional external resources as necessary • Coordinate recovery and investigative activity • Notify Senior Project Manager • Ensure all government reporting has been completed • Organize and conduct post-incident debriefings • Prepare Incident Report and make recommendations
First Aid Attendant	<ul style="list-style-type: none"> • Ensure area supervisor has been notified of incident • Provide first aid treatment if necessary • Mobilize ambulance to scene, if required • Stand by to assist as required by scene coordinator
Senior Project Manager	<ul style="list-style-type: none"> • Designate on-call senior personnel during weekends • Receive briefings on incident details • Provide direction as required • Notify regulatory agencies, government and Alexco corporate office of incident • Review Incident Reports • Attend at all incidents involving “serious injury” and “serious accident”, as defined in Sec. 33, OHS Act • Verify compliance with standards and government regulatory requirements • Forward necessary reports to regulatory agencies • Fire Chief – assume responsibility for fire investigation
Safety Coordinator	

Keno Hill Project
EMERGENCY RESPONSE PLAN

Effective: November 30, 2009
Projected Revision: January 1, 2010



6.0 SERIOUS INCIDENT CONTACTS FOR SITE PERSONNEL

Position	Contact Personnel	Office Contact Number	Radio	Home Contact Number
Operations General Manager	Tim Hall	867-995-3113	CH 3	907-790-2245
Safety Coordinator	Colleen Geddes	867-995-3113	CH 3	867-667-6155
Mine Manager	Tom Fudge	867-995-3113	CH 3	
Project / Construction Manager	Peter Johnson	867-995-3113	CH 3	867-993-5911
Remediation Manager	Kael Hanak	867-995-3113	CH 3	867-393-2741
Operations General Manager	Tim Hall	867-995-3113	CH 3	907-790-2245
Chief Operating Officer	Brad Thrall	604-633-4888		604-250-6501
Chief Executive Officer	Clynt Nauman	604-633-4888		604-250-3293
Access Consulting Group	Dan Cornett	867-668-6463		867-668-7964
Procon Mining (Elsa)	Anson Smith	867-995-3113 604-637-5997 (Bellekeno)	CH 3	
Procon Mining (Vancouver)	Brad Skeeles	604-296-3365		778-837-4407
Boart Longyear	William Krasnozou	705-672-3311		705-499-3444
Kluane Drilling		705-672-3311		

Keno Hill Project
EMERGENCY RESPONSE PLAN

Effective: November 30, 2009
Projected Revision: January 1, 2010



7.0 EXTERNAL RESOURCE CONTACTS

With the exception of medical aid incidents, external resources will be authorized only by the Senior Project Manager on site or his designate, or those with higher level of responsibility.

Assistance Required For:	Agency Contact	Contact Number
Ambulance / Air Medivac	Mayo Nursing Station	867-996-4444
Poisonous Substance Ingestion	Poison Control Centre	867-633-8477
Fire (building) / Rescue Assistance	Mayo Fire Department	867-996-2222
Forest Fire		888-798-FIRE
Spill	Yukon Spill Report Line	867-667-7244
Spill Fax		867-393-6266
Wildlife Management	YTG Ren. Res. - Mayo	867-996-2162
Crime – Related Incidents	RCMP – Mayo	867-996-5555
Fatality	Coroner or RCMP	867-996-5555
Mine Rescue YT OH&S	Mine Inspector	867-334-2002
Procon Mining and Tunneling Ltd	Brad Skeeles	604-291-8292
Boart Longyear	William Krasnozou	705-499-3444
Kluane Drilling		705-672-3311

Keno Hill Project
EMERGENCY RESPONSE PLAN

Effective: November 30, 2009
Projected Revision: January 1, 2010



8.0 UNDERGROUND EMERGENCY ACTION PLAN

In an emergency situation it is imperative that due diligence is exercised as well as discretion. The priorities are the protection of **LIFE, LIMB and PROPERTY** – in that order

Please see **Section 2. of this E.M.R.P document** for further definition of a SERIOUS reportable incident / accident. All SERIOUS reportable incidents / accidents require notification of the YT OH&S Mine Inspector as defined in the Occupation Health and Safety Act – Mine Safety Regulations

“Underground Emergency” means:

- a) “Serious” Incident
- b) Serious Injury
- c) Uncontrolled fire
- d) Unexpected fall
- e) Unexpected explosion
- f) Any condition that can negatively affect:
 - life,
 - health
 - the environment.

“Mass Casualty Incident Emergency” – Underground means:

Any underground emergency which could affect 5 or more people.

Keno Hill Project
EMERGENCY RESPONSE PLAN

Effective: November 30, 2009
Projected Revision: January 1, 2010



8.1 REPORTING THE EMERGENCY:

Where an EMERGENCY exists that may affect mine personnel, evacuation procedures must be initiated.

Underground Emergency -

Any person discovering an emergency shall:

1. Request or initiate mine evacuation.
2. Notify personnel of the emergency using a mine phone or radio in your area (leaky feeder).
3. When mine radio or phone is not readily available for use as emergency notification:
 - a) Proceed to the mine portal.
 - b) Open the stench warning control box located on the compressed airline
 - c) Turn the cylinder "on".
 - d) Remain at the box until the cylinder is empty.
 - e) Proceed to Bellekeno Mine Office Dry and report the nature of the emergency to response personnel.
 - f) Report in, brass out and standby for further instruction.
 - g) In addition to the compressed airline stench a stench bottle will be located at the main fan intake at both Bellekeno East Portal and Bellekeno 625 level. The fan must be on and response personnel must open the stench bottle and release the gas into the main fan air intake.

Keno Hill Project
EMERGENCY RESPONSE PLAN

Effective: November 30, 2009
Projected Revision: January 1, 2010



8.2 IN CASE OF FIRE:

Where a FIRE exists that may affect other personnel working in the area, evacuation procedures must be initiated:

Evacuation Procedures

1. Warn all personnel in the immediate area (voice, radio, phone) to evacuate to a safe location.
2. Initiate the Stench Warning System.
3. Where the fire is small, use nearby fire extinguishers to extinguish it, provided it is safe to do so.
4. If down wind of the fire, don your self rescuer (either the W65 or the SCSR's) and proceed to either a refuge station or fresh air base.
5. Do not expose yourself to unnecessary risk and keep a clear area of retreat behind you.
6. If the fire is too big, do not hesitate, leave the area immediately and evacuate to the designated assembly area or seek refuge.

Mass Casualty Incident Emergency - Underground

In the event of an emergency which could harm more than 5 employees, request that the underground stench warning system be initiated immediately:

This includes:

- All fires
- Fall of ground
- Inundation of water
- Unplanned explosion
- Gas
- Electrical

Keno Hill Project
EMERGENCY RESPONSE PLAN

Effective: November 30, 2009
Projected Revision: January 1, 2010



8.3 EMERGENCY WARNING RESPONSE:

Upon being notified of a mine emergency evacuation either by radio, phone or stench warning:

1. Stop work immediately,
2. Note the time you received the warning
3. Calmly proceed out of the mine using the safest route possible.
4. **DO NOT RUSH UNNECESSARILY – EXCESSIVE SPEEDS USED TO LEAVE THE MINE CAN RESULT IN INCIDENT OR INJURY.**

Once out of the mine,

1. Proceed immediately to the Bellekeno Mine Office Dry,
2. Report in to the Check out Coordinator and “Brass Out”.
3. Remain in the Mine Office Dry for further instructions.

Keno Hill Project
EMERGENCY RESPONSE PLAN

Effective: November 30, 2009
Projected Revision: January 1, 2010



8.4 MEDICAL PERSONNEL:

Underground Emergency – System of response

1. Initiate emergency response notification procedures as directed by Area Supervisor or Site Coordinator.
2. Upon completion of the emergency response notification procedure:
 - a) Complete the EMERGENCY DATA SHEET.
 - b) Establish MEDICAL ROOM as the COMMUNICATION CENTER.
 - c) Keep all Communication Equipment on Standby.
 - d) Direct operations personnel to COMMUNICATION CENTER.
 - e) Confirm Incident Coordinator (IC) response has been initiated.
 - f) Complete the EMERGENCY DATA SHEET by obtaining the following information:
 - Name of person reporting the emergency
 - Nature and severity of injuries and/or incident
 - Assistance required
 - Location of emergency
 - Number of people involved

Keno Hill Project
EMERGENCY RESPONSE PLAN

Effective: November 30, 2009
Projected Revision: January 1, 2010



8.5 REFUGE CHAMBER BARRICADING

For use when the nature of an emergency (such as fire, smoke, fall of ground) prevents your safe exit from the mine.

Nature of the refuge chamber

An air lock is provided to keep smoke and gases out of the inner chamber. There is a charged air line between the doors that can be used to blow smoke and gases out of the air lock before opening the inner door and possibly admitting bad air into the chamber.

When the refuge chamber is required:

1. **DO NOT HESITATE.** DON YOUR SELF-RESCUER IF SMOKE OR FIRE IS ENCOUNTERED.
2. RETREAT DIRECTLY TO THE NEAREST REFUGE CHAMBER AND BARRICADE YOURSELF IN.
3. Review the barricading procedures posted inside the refuge chamber.
4. Once inside, if smoke and gases leak in around the door frame, use the foam sealant provided to seal the door frame.
5. There is a compressed air line in the inner chamber. Open the air valve a $\frac{1}{4}$ turn to ensure a supply of breathing air and create a slight positive pressure to keep smoke and gases out.
6. Each chamber has a CO₂ exhaust valve located on an outer wall 2 feet above the floor. Find it and open it when using compressed or bottled air. This will prevent the chamber from over-pressurizing and allows carbon dioxide from your exhaled breath to escape. Carbon dioxide is much heavier than air; that is why the valve is low on the wall.

Keno Hill Project
EMERGENCY RESPONSE PLAN

Effective: November 30, 2009
Projected Revision: January 1, 2010



7. If the compressed air line loses pressure, the compressed air bottles can be used to provide a source of breathing air. Turn the compressed air line off. If fire caused the failure, air could be withdrawn out of the chamber through the air line.
8. Turn on all 4 compressed air bottles. Turn the regulator knob and adjust the outlet pressure to 25 – 30 psi. Adequate breathing air and slight positive pressure will be provided.
9. Check the mine phone for operation and call outside the mine. Report the following information:
 10. Your name and name of others in refuge.
 11. Refuge Chamber location.
 12. Outside conditions.
 13. That you are safe in refuge.
 14. Remain in the refuge as long as you are safe, even if communication is cut off.
 15. Do not be tempted to wander about the mine seeking safe passage out.
 16. Remain in the refuge until you are rescued by mine rescue personnel.

Keno Hill Project
EMERGENCY RESPONSE PLAN

Effective: November 30, 2009
Projected Revision: January 1, 2010



8.6 MAIN VENTILATION CONTROLS IN CASE OF FIRE

In the event of an underground fire, efforts will be undertaken to ensure ventilation to the mine is maintained.

Operation of the main ventilation fans in Bellekeno East Decline and/or Bellekeno 625 level will be guarded and monitored to ensure continuous operation of the fans at all times.

The effects of the alteration to the main ventilation fans shall be clearly understood before the changes are made.

During a mine fire:

- There will be no alteration to the operation of the main fans without the authorization of the Area Supervisor or Site Coordinator.

8.7 MINE VENTILATION OUTAGE ACTION PLAN

In the event of fan failure due to a malfunction, accident, power failure, or other such unplanned or unscheduled event, this action plan applies to all underground employees and contractors whose work areas are affected by the temporary interruption of the operation of the main, booster, or auxiliary fans in the mine.

Main Ventilation Interruption Procedure:

Less Than 2 Hours:

1. Diesel mobile equipment, mucking operations, will cease in all active production and development headings supplied by mechanical ventilation until the main ventilation system is restored. ... OR ... The active heading is continually monitored for air quality and is maintained in compliance with the applicable standards.
2. All other work relevant (scaling, cleanup, maintenance, etc) to the active heading may continue per normal operations provided the air quality remains in compliance with the applicable standards.
3. Diesel mobile equipment for access to, or egress from, the mine will continue per normal mine operations provided air quality remains within compliance of the standards. **If the ventilation is forced the diesel equipment must be shut down until ventilation is re-established.**

Keno Hill Project
EMERGENCY RESPONSE PLAN

Effective: November 30, 2009
Projected Revision: January 1, 2010



Two Hours or More:

1. Air quality testing will be performed by Supervision in all active headings affected by the ventilation interruption. Where air quality is not within compliance of the standards for mine ventilation, all personnel shall be withdrawn from the active heading affected.
2. Ventilation to the affected active headings shall be restored to normal and the air quality in the affected active workings shall be tested by Supervision to ensure the air quality meets the requirements of the standards prior to the return to work in the area.
3. Prolonged ventilation interruption will require air quality testing in the affected active workings at least every four hours until ventilation has been restored.
4. In areas where air quality prevents continued testing, normal ventilation shall be restored for a minimum of two hours before persons enter the area to test air quality ... OR ... Suitable self contained breathing apparatus and procedures consistent with YT WCBOHS Regulations will be followed by competent persons to perform air quality testing the effected area.
5. Diesel mobile equipment for access to, or egress from, the mine on the main haulage ways will continue per normal mine operations provided air quality remains within compliance of the standards.
 - a. **This is contingent on the mine having flow through exhaust. If the ventilation is forced the diesel equipment must be shut down and the mine evacuated until ventilation is re-established.**

Mine Quality Air Standards		
OXYGEN	Minimum 19%	Normal air is 21%
CARBON MONOXIDE	Permissible limit 35 PPM	
NITROGEN DIOXIDE	Permissible limit 3 PPM	
SULFUR DIOXIDE	Permissible limit 2 PPM	

Keno Hill Project
EMERGENCY RESPONSE PLAN

Effective: November 30, 2009
Projected Revision: January 1, 2010



9.0 MINE RESCUE

The contractor (Procon Mining and Tunneling) and Alexco Resource Corp. will have a trained mine rescue team available for mine emergencies.

If the mine rescue team is required, a back-up team has to be readily available. Due to Alexco's size of operation, sufficient responders may not be available onsite. Alexco has in place cooperative agreements with the Cantung Mine in the Yukon, BHP Ekati Mine in the NWT and other divisions of Procon Mining and Tunneling.

If the incident requires Mine Rescue response the YT OH&S Mine Inspector, Cantung and Ekati must be notified immediately, advised of the situation and to respond immediately pending available resources.

Agency	Contact Personnel	Office Contact Number	Home Contact Number
YT OH&S Mine Inspector	Ossie Venasse	867-334-2002	1-800-661-0443 (toll free)
Procon Mining and Tunneling	Brad Skeeles	604-291-8292	778-837-4407
Cantung Mine	Mark Goebel or Mike Daley	604-759-0913 X225	safety@skymessage.com
BHP Ekati Mine (NWT)	Rob MacLean or Richard Weishaupt	867-880-2201	867-880-2154

Keno Hill Project
EMERGENCY RESPONSE PLAN

Effective: November 30, 2009
Projected Revision: January 1, 2010



10.0 REPORTABLE SPILL QUANTITIES

Should a spill of reportable quantity occur, under federal and territorial regulations, we are required to *immediately* notify the 24-hour Yukon Spill Report line: telephone number 867-667-7244.

For the purposes of the water use license:

1. Any quantity of spill is reportable.
2. The Senior Project Manager, Site Coordinator or Manager On-Call are responsible for reporting spills.
3. Reportable spills require an Incident Investigation Report to be completed.

This guide will assist in determining what volume of product requires reporting to regulatory agencies.

If a spill is deemed to be of reportable quantity, the area supervisor will immediately notify the Site Coordinator or Senior Project Manager who will in turn ensure that spill reporting is completed by designated personnel.

Keno Hill Project
EMERGENCY RESPONSE PLAN

Effective: November 30, 2009
Projected Revision: January 1, 2010



Reportable spill quantities

HAZARD Class	TYPICAL PRODUCTS ON SITE	REPORTABLE QUANTITY
Explosives (1)	<ul style="list-style-type: none"> ANFO 	Any amount spilled outside of blast pattern
Flammable Gases (2.1)	<ul style="list-style-type: none"> Propane Acetylene 	>100 Liters
Non-Flammable Gases (2.2)	<ul style="list-style-type: none"> Halon 	>100 Liters
Poisonous Gases (2.3)		Any Amount
Non-poisonous Gases (2.3)		>100 Liters
Corrosive Gases (2.4)		Any Amount
Non-corrosive Gases (2.2)		>100 Liters
Flammable Liquids (3.)	<ul style="list-style-type: none"> Diesel Gasoline Glycol Hydraulic &/or Engine Oil 	>200 Liters
Flammable Solids (4.)		>25 kg
Spontaneous Combustibles (4.)		>25 kg
Dangerous When Wet (4.)		>25 kg
Oxidizers (5.1)	<ul style="list-style-type: none"> Sodium Hydroxide / Caustic Soda Lime Solution Sodium Nitrate Calcium Hypochlorite Ammonium Nitrate 	>50 kg or 50 Liters
Corrosive Materials (8.)	<ul style="list-style-type: none"> Hydrochloric / Muriatic / 	>5 kg or 5 Liters
Miscellaneous Dangerous Goods (9.1)		>50 kg
Dangerous Waste (9.3)	<ul style="list-style-type: none"> Waste Oil 	>5 kg or 5 Liters

The Bellekeno MLU operating permit dictates that all spills will be reported.

Keno Hill Project
EMERGENCY RESPONSE PLAN

Effective: November 30, 2009
Projected Revision: January 1, 2010



11.0 SPILL RESPONSE EQUIPMENT RESOURCE LIST

	Location	Contact
Spill Response Kit	<ul style="list-style-type: none">• Bellekeno East Fuel Tank• Bellekeno East Shop• Bellekeno 625 Adit• Flame and Moth Mill• All Vehicles Carrying Hazardous Materials	Site Coordinator
Oil- Absorbent Pads	<ul style="list-style-type: none">• In Spill Kits	Site Coordinator
Oil- Absorbent Booms	<ul style="list-style-type: none">• In Spill Kits	Site Coordinator

Any contaminated soils will be removed to the land treatment facility in Mayo or a suitable permitted facility within the Keno Project area.

All vehicles carrying hazardous materials will be equipped with a spill kit and personnel will be trained in spill response measures.

Keno Hill Project
EMERGENCY RESPONSE PLAN

Effective: November 30, 2009
Projected Revision: January 1, 2010



12.0 MISSING PERSONS ACTION PLAN

Potential exists where persons may become lost on the property. Such incidents can occur under the following circumstance:

- Alexco or Contractor personnel engaged in surface exploration or any other activities (i.e. care and maintenance) are overdue and can not be located or contacted.

Upon notification that Alexco personnel, or Contractors are unaccounted for on the property you should:

1. Immediately advise the Area Supervisor and Senior Project Manger or Site Coordinator who will:
 - Assess and determine the level of response required.
 - Gather all available information about the missing persons including last known location.
 - Advise the RCMP of the circumstances and request further assistance
 - Designate Keno Hill Project employees to stand-by and assist the RCMP in search efforts as directed

2. Stand-by to provide further information and assistance as required.

Keno Hill Project
EMERGENCY RESPONSE PLAN

Effective: November 30, 2009
 Projected Revision: January 1, 2010



13.0 EMERGENCY EQUIPMENT AND EQUIPMENT LOCATIONS

EMERGENCY EQUIPMENT	LOCATION	USE IS AUTHORIZED BY:
Ambulance 4x4 Suburban with Stretchers	Elsa Town site Fire hall	Sr .Project Manager / Site Coord. First Aid Attendant
(MMTU) Mobile Medical Treatment Unit 4 x 4 Truck with Stretchers	Bellekeno Mine Site	Sr .Project Manager / Site Coord. First Aid Attendant
AED Automatic External Defibrillator Use when CPR is required	Admin 1 st Aid Room Black and Neon ZOLL – AED Bellekeno East 1 st Aid Room	Sr .Project Manager / Site Coord. First Aid Attendant
Oxygen Airway Adjuncts (OPA)	MMTV 1 st Aid Jump Kit Admin 1 st Aid Room Bellekeno East 1 st Aid Room	Sr .Project Manager / Site Coord. First Aid Attendant
Spinal Precautions Spine Boards & Head Blocks Stiff Collars Spyder Straps KED – Vehicle extrication device	Ambulance MMTV Admin 1 st Aid Room Bellekeno East 1 st Aid Room	Sr .Project Manager / Site Coord. First Aid Attendant
Splints Vacuum Splints – Extremity breaks	Admin 1 st Aid Room Bellekeno E. 1 st Aid Room	Sr .Project Manager / Site Coord. First Aid Attendant
Wound Management Burn Dressings Sterile Water Bandages & Dressings	Ambulance MMTV Admin 1 st Aid Room 1 st Aid Jump Kit Bellekeno East 1 st Aid Room	Sr .Project Manager / Site Coord. First Aid Attendant
EPI Pens Anaphylactic Shock / Allergies	Ambulance MMTV Admin 1 st Aid Room 1 st Aid Jump Kit Bellekeno E. 1 st Aid Room	Sr .Project Manager / Site Coord. First Aid Attendant

Keno Hill Project
EMERGENCY RESPONSE PLAN

Effective: November 30, 2009
Projected Revision: January 1, 2010



14.0 EMERGENCY FIRST AID PATIENT ASSESSMENT MODEL

THE ROLE OF THE FIRST PERSON AT THE SCENE

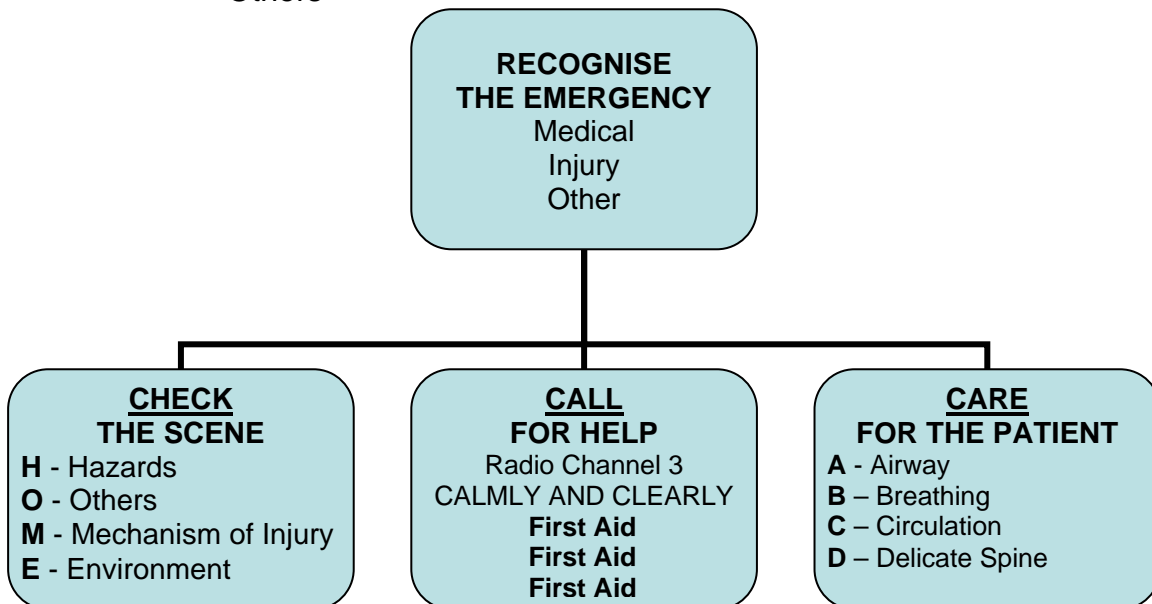
1. **CHECK** - Recognize the emergency
2. **CALL** – Activate medical services / first aid to attend the scene
3. **CARE** - Act according to your skills, knowledge and comfort level

A “**medical emergency**” is an illness or condition that needs immediate medical attention. For example:

- Anaphylactic shock
- Diabetic emergency
- Heart attack
- Others

An “**injury**” is damage to the body caused by external force. For example this damage can cause

- Broken bones
- Burns
- Wounds
- Others



Keno Hill Project
EMERGENCY RESPONSE PLAN

Effective: November 30, 2009
Projected Revision: January 1, 2010



15.0 EMERGENCY CONTACT INFORMATION

As this ERP document is updated, only revised pages will be replaced.

15.1 Keno Hill Project

Name	Office	Home (other)	Cell
Tim Hall Operations General Manager	867-995-3113	907-790-2245	907-723-8974
Colleen Geddes Safety Coordinator	867-995-3113	867-667-6155	867-332-8384
Peter Johnson Project/Construction Manager	867-995-3113	867-993-5911	N/A
Kael Hanak Remediation Manager	867-995-3113	867-393-2741	N/A
Andrea Mansell Administration	867-995-3113	867-993-5911	N/A
Stan Dodd VP Exploration	867-995-3113	360-647-1375	360-319-1882
Bellekeno Shifters Office	1-604-637-5669		
Anson Smith Procon Mining	867-995-3113		306-382-9748
William Kraznosen Boart Longyear	705-672-3311		705-499-3444
Kluane Drilling			

Keno Hill Project
EMERGENCY RESPONSE PLAN

Effective: November 30, 2009
Projected Revision: January 1, 2010



In the event of a “SERIOUS” Incident, injury or accident you must notify:

1. Keno Hill Project Department Manager or Alternate
2. Member of the First Aid, Health and Safety Department

15.2 Keno Hill Project Department/Area Mangers

Name	Office	Home (other)	Cell
Tim Hall Operations General Manager	867-995-3113	907-790-2245	907-723-8974
Colleen Geddes Safety Coordinator	867-995-3113	867-667-6155	867-332-8384
Stan Dodd VP Exploration	867-995-3113	360-647-1375	360-319-1882
Peter Johnson Project/Construction Manager	867-995-3113	867-993-5911	
Kael Hanak Remediation Manager	867-995-3113	867-393-2741	N/A
Andrea Mansell Administration	867-995-3113	867-993-5911	
Anson Smith Procon Mining	867-995-3113		
William Kraznosen Boart Longyear	705-672-3311		705-499-3444
Kluane Drilling			

15.3 First Aid, Health & Safety Department

Name	Office	Home (other)	Qualification
Jennifer Dobbie First Aid & Safety	867-995-3113	867-332-5363	EMR, Mine Rescue U/G
Andrea Mansell First Aid / Administration	867-995-3113	867-993-5911	EMR, Surface Rescue
Tiffany Jewell First Aid & Safety	867-995-3113		EMR
Lisa Perry First Aid & Safety	867-995-3113		EMR

Keno Hill Project
EMERGENCY RESPONSE PLAN

Effective: November 30, 2009
Projected Revision: January 1, 2010



15.4 Alternate Keno Hill Department Managers

Name	Office	Home (other)	Cell
Grant Ewing / Les Keim Care and Maintenance	867-995-3113	867-332-1329 GE 867-993-5878 LK	
Rob McIntyre Access Consulting	867-668-6463	867-633-5844	867-334-6002
Dan Cornett Access Consulting	867-668-6463	867-668-7964	867-334-5104
Brad Thrall, COO Alexco Resource Corp	604-633-4888		604-250-6501
Clynt Nauman, CEO Alexco Resource Corp	604-633-4888		604-250-3293
David Whittle, CFO Alexco Resource Corp	604-633-4888		

ALEXCO RESOURCE CORP.
 Keno Hill Project
 PO Box #7
 Elsa, Yukon Territory
 Y0B 1J0

Tel: 867-995-3113
Fax: 604-995-2600

ALEXCO RESOURCE CORP.
 Corporate Administrative Office
 Suite 1150 - 200 Granville Street
 Vancouver, BC
 V6C 1S4

Tel: 604-633-4888
Fax: 604-633-4887

ALEXCO RESOURCE CORP.
 #3 Calcite Business Centre
 151 Industrial Road
 Whitehorse, YT
 Y1A 2V3

Tel: 867-633-4881
Fax: 867-633-4882

Keno Hill Project
EMERGENCY RESPONSE PLAN

Effective: November 30, 2009
Projected Revision: January 1, 2010



15.5 Reporting for “Serious” incidents, injuries, or accidents

Agency	Name	Home (other)	Other
YT OH&S Mine Inspector	Ossie Venasse	867-334-2002	1-800-661-0443 (toll free)
Chief Operating Officer Alexco Resource Corp	Brad Thrall	604-633-4888	604-250-6501
Chief Executive Officer Alexco Resource Corp	Clynt Nauman	604-633-4888	604-250-3293
Chief Financial Officer Alexco Resource Corp	David Whittle	604-633-4888	

15.6 Radio Communications

Channel	Area
Channel 3	Keno Hill Project – First Aid
Channel 4	LAD 1

Summon First Aid by:

Ensuring the radio turned on and on Channel 3

Keying the mic. to capture the channel

Clearly and calmly say: First Aid ...First Aid ...First Aid

Wait for a response from the attendant

State your name

State your location

State the nature of the assistance required

Keno Hill Project
EMERGENCY RESPONSE PLAN

Effective: November 30, 2009
Projected Revision: January 1, 2010



15.7 Emergency MEDIVAC Transportation

Name	Office	
ALCAN Air Fixed Wing	867-668-2107	Whitehorse Dispatch
Trans North Helicopters Helicopter	867-996-2355 867-335-2355	Mayo Dispatch Kel Huston - Pilot
Trans North Helicopters Helicopter	867-668-2177	Whitehorse Dispatch
Mayo Nursing Station Ground Ambulance	867-996-4444	Mayo Nursing Station Dispatch
Mayo RCMP Alternate Emergency	867-996-5555	Mayo / Whitehorse Station Dispatch

Important information to convey to MEDIVAC dispatch

1. Number of patients
2. Location of patients
3. Patient assessment provided by First Aid Attendant including:
 - Level of consciousness
 - Vitals – ABC's
 - Treatments provided (if any)
 - Spinal precautions (if any)
4. Weather or driving conditions
5. Coordinates for helicopter

HELICOPTER LANDING PADS -

Sites have windsocks for directional reference

Safety personnel will ensure the landing site is clear, lighted and free of traffic

<u>Elsa town site:</u>	Latitude	63. 54 North
	Longitude	135.29 West
Landing is at the shop / transport area		
<u>Bellekeno East Mine:</u>	Latitude	63. 54 North
	Longitude	135.15 West
Landing is at the helicopter pad located up hill of the portal at the waste rock site.		

Keno Hill Project
EMERGENCY RESPONSE PLAN

Effective: November 30, 2009
 Projected Revision: January 1, 2010



15.8 Keno Hill Mine Rescue

Name	Agency	Name
Anson Smith	PROCON	U/G Rescue
Leland Smith	PROCON	U/G Rescue
Steve Cooper	PROCON	U/G Rescue
Andrew McArdle	PROCON	U/G Rescue
Randy Molinga	PROCON	U/G Rescue
Herman Melancon	PROCON	U/G Rescue
Roger Herbert	Boart Longyear	U/G Rescue
Jean-Guy Therriault	Boart Longyear	U/G Rescue
Tim Hall	ALEXCO – U/G	U/G Rescue, SFA – CPR
Jennifer Dobbie	ALEXCO – U/G	U/G Rescue, EMR
Grant Ewing	ALEXCO – U/G	U/G Rescue, SFA – CPR, Fire 1, Auto Ex
Travis Murphy	ALEXCO – U/G	U/G Rescue, SFA – CPR
Florian Zech	ALEXCO – U/G	U/G Rescue, SFA – CPR
Vince Scartozzie	ALEXCO – U/G	U/G Rescue, SFA – CPR
Kael Hanak	ALEXCO – U/G	U/G Rescue, SFA – CPR
Peter Johnson	ALEXCO – Surface	EMR, Auto Ex
Tiffany Jewell	ALEXCO – Surface	EMR, Auto Ex
Andrea Mansell	ALEXCO – Surface	EMR, Auto Ex
Kyle Morrison	ALEXCO – Surface	SFA, Class 2
Rob Schneider	ALEXCO – Surface	EMR, Auto Ex
Stan Dodd	ALEXCO – Surface	SFA – CPR
Jared Chipman	ALEXCO – Surface	SFA – CPR
Kathleen Gould	ALEXCO – Surface	SFA – CPR
Colleen Geddes	ALEXCO – Surface	EMR

15.9 Co-operative Mine Rescue (CMR) Assistance

Agency	Name	Home (other)	Other
YT OH&S Mine Inspector	Ossie Venasse	867-334-2002	1-800-661-0443
Procon Mining & Tunneling	Brad Skeeles	604-291-8292	778-837-4407
Cantung Mine	Mark Goebel or Mike Daley	604-759-0913 X225	safety@skymessage.com
BHP Ekati Mine (NWT)	Rob MacLean or Richard Weishaupt	867-880-2201	867-880-2154

Keno Hill Project
EMERGENCY RESPONSE PLAN

Effective: November 30, 2009
Projected Revision: January 1, 2010



15.10 Territorial and Federal contact numbers

Name	Office	
Mayo Ambulance	867-996-4444	Mayo (Volunteer Responders)
Mayo Fire & Rescue	867-996-2222	Mayo (Volunteer Responders)
RCMP	867-996-5555	Mayo
Whitehorse Regional Hospital	867-393-8700	Emergency
Whitehorse Regional Hospital	867-393-8700	Admissions
Yukon Corner	867-667-5317	Whitehorse
Yukon Dept. of Conservation	867-667-5317	Whitehorse
Yukon Dept. of Fish & Game	867-393-6722	Whitehorse
Yukon Energy	867-996-2387	Mayo
Yukon Energy	1-800-676-2843	After hours Whitehorse
Yukon Occupational Health & Safety	867-334-2002 tel. 867-393-6279 fax	YOH&S Ossie Venasse (Mine Inspector)

16.0 RETURN TO WORK PROGRAM

A Return to Work program for injured workers will be developed by Alexco and included within the Emergency Response Plan.