



ALEXCO

HERITAGE RESOURCES PROTECTION PLAN

QML-0009

November 2009

BELLEKENO PROJECT



ACCESS
CONSULTING GROUP

Table of Contents

1.0 Introduction 1
2.0 Heritage Resources Protection Plan 1
3.0 Response to Discovery of Heritage Resources..... 5
4.0 Employee and Contractor Awareness..... 6

1.0 Introduction

The Keno Hill Mining District is located in the vicinity of Keno City (63° 55'N, 135° 29'W), in central Yukon Territory, 354 km (by air) due north of Whitehorse. Access to the property is via a paved, two-lane highway from Whitehorse to Mayo (407 km) and an all-weather gravel road northeast from Mayo to Elsa (45 km); a total distance of 452 km. The Bellekeno mine is located about 3 km east of Keno City, while the Flame and Moth mill site is about 1.2 km to the west

The following Heritage Resources Protection Plan has been assembled to address the potential discovery of previously unknown heritage resources during the course of the project and provide a protocol for reporting and protecting these resources. For reference, the following definitions of heritage resources are provided:

- Heritage (or Historic) Resource – abandoned sites and objects greater than 45 years in antiquity. Cabins, caches, graves, brush camps, and other man-made structures, features or objects are the most readily recognized. Mining artifacts in the Keno Hill District are particularly abundant, as the area has hosted nearly 100 of years of very active mining.
- Archaeological Resource – tend to date before European contact and found on or under the ground surface, generally consisting of the remains of ancient camps, hearths, stone tools and debris.
- Palaeontological Resource – fossil and other remains of extinct or prehistoric plants and animals including bones of mammoth, horse, bison and other ice age fauna as well as fossil remains and traces plants, vertebrate and invertebrate fauna.

2.0 Heritage Resources Protection Plan

Over the decades since the mid-19th century, pioneer gold seekers, frontiersmen, miners, surveyors, trappers, merchants, geologists, engineers and individualists have come to explore, live and work in the Keno area. Since the major discovery of silver

around the turn of the 20th century, the district made the Yukon one of the world's leading silver producers and backstopped the territorial economy for decades.

Alexco recognizes the importance of the historic and heritage values that characterize this historic mining district. In fact, the historic and heritage aspects of the Keno Hill Silver District certainly enhances our pride and enjoyment of the area while we pursue the economic revitalization of the District. As miners, we naturally hold historic mining evidence and artifacts in high regard.

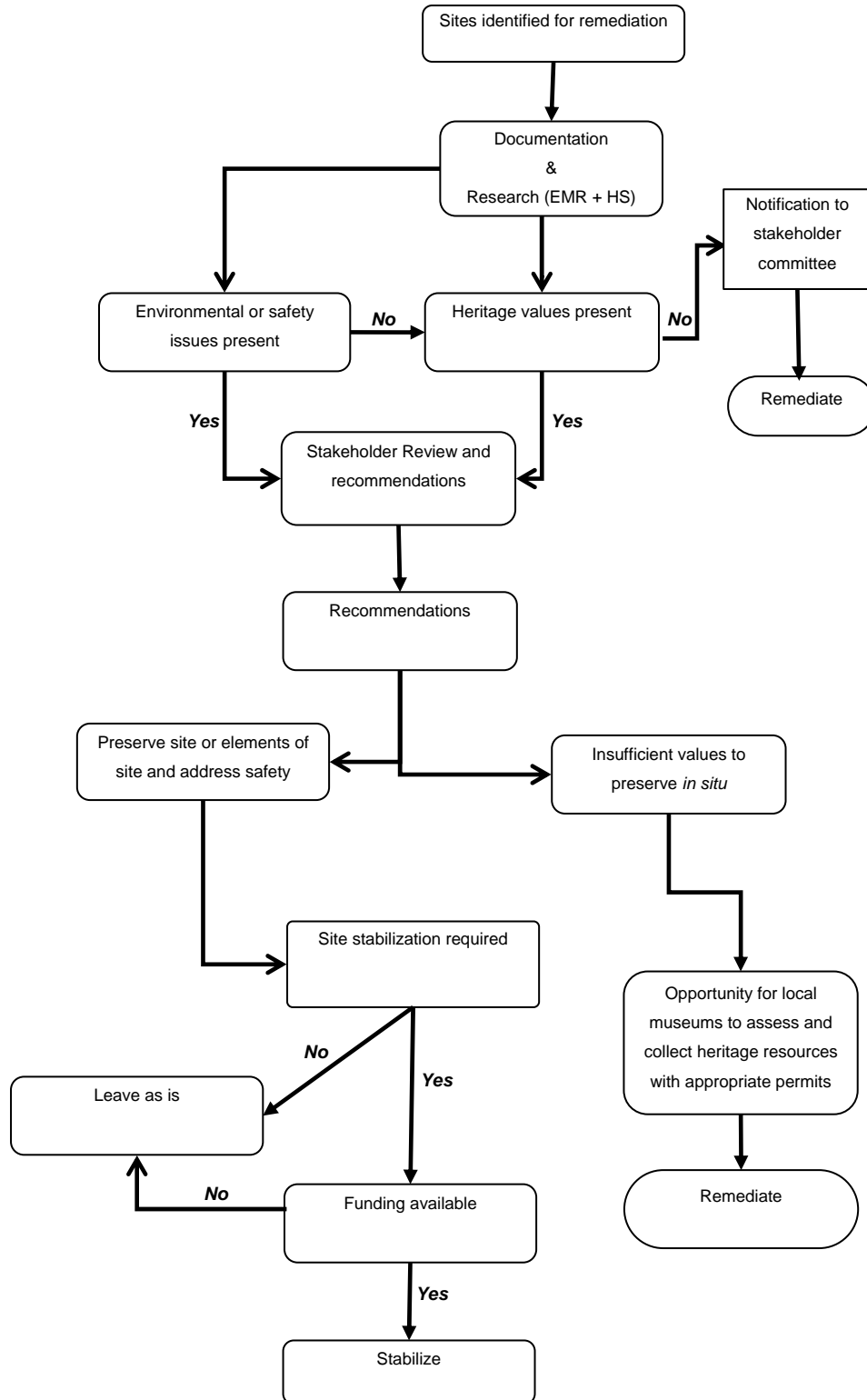
Consideration of heritage resources is an important component of the District wide Closure Plan being developed by Alexco and the governments of Canada and Yukon and the NNDFN. Multi-stakeholder heritage assessment of Keno Hill last year, as a component of our Physical Hazards reduction program, identified specific elements of the Keno 700 mine site, as well as Comstock-Keno, the Keno 200, and the Porcupine Mine. Although much of these sites will be remediated, there were several items of interest to various the stakeholder groups who participated in the preliminary assessment. These items will remain on site until such time as an approved district wide closure plan is approved.

In general, the process developed in conjunction with Type II Abandoned Mine Sites and YG Heritage and NNDFN follows the protocol as presented as Figure 1 "*Protocol for Site Remediation of Keno Hill Mine Sites*".

Documentation of sites includes: locating with GPS, photographs, cataloguing, initial condition, environmental and public safety assessment, historical research.

The stakeholder Committee struck to oversees this work includes ERDC, First Nation of the Nacho Nyak Dun, the Silver Trail Association, YG – Yukon Type II Abandoned Mines staff, Yukon Historic Sites staff and Keno City representatives.

Figure 1 Protocol for Site Remediation of Keno Hill Mine Sites



Local Museums in the area are the Keno Mining Museum in Keno or the Binet House in Mayo.

Prior to any removal of any heritage resource from the Keno Hill will require a Permit to remove heritage resources from sites – Scientists and Explorers Permit.

Through community and stakeholder consultation, the Duncan Creek Road to the west of Keno City was identified as having been used in the past as an informal solid waste disposal area. This area may correspond with Phase II of the Keno City Bypass, and construction of this road may disturb heritage resources. A formal heritage inspection of the Keno City Bypass the Flame and Moth mill site/DSTF area has been schedule with Yukon Government Heritage Branch on July 28th, 2009 in order to identify and preserve any heritage resources which may exist before construction commences.

With the possible aforementioned exception, no activities will occur in the vicinity of known heritage resources unless approved in writing by the appropriate authorities. Before commencing any project activities that may disturb known heritage resources, the area would be appropriately marked in the field. Development is prohibited within 30 m of a known or suspected heritage site.

3.0 Response to Discovery of Heritage Resources

The following response will be implemented to provide protection for any heritage resources discovered during:

- Land clearing;
- Road and trail construction/use; and
- Excavation and placement of soils/rock in are as proposed for development.

Notification & Preliminary Response	<ul style="list-style-type: none"> • In the event previously unknown heritage resources are discovered, operations will be suspended and the site will immediately be marked and protected from further disturbances and no objects will be removed. • Notification will be provided to Yukon Government Heritage Resources Branch at (867)667-5363 and the NNDFN at (867) 996-2265 and they will be consulted for advice on mitigation. • No further activities may be carried out within 30 m of the site until Yukon Government indicates in writing that the activities may be resumed.
Archaeological Resources	<ul style="list-style-type: none"> • Any site containing archaeological objects discovered in the course of carrying out operations will, as soon as practicable, be reported to the Yukon Archaeology Program, Government of Yukon in Whitehorse at (867)667-3771 or (867)667-5386.
Palaeontological Resources	<ul style="list-style-type: none"> • Any site containing palaeontological resources discovered will, as soon as practicable, be reported to the Yukon Palaeontology Program, Government of Yukon in Whitehorse at (867)667-8089 or 1-800-661-0408.
Human Remains	<ul style="list-style-type: none"> • If human remains or burial sites are discovered, work will cease immediately and the RCMP notified. The Guidelines Respecting the Discovery of Human Remains and First Nation Burial Sites in the Yukon will be followed.

4.0 Employee and Contractor Awareness

During mandatory orientation, all new employees and contractors of Alexco will be made aware of Alexco's heritage awareness policy and briefed on company protocols and procedures related to heritage resource protection.