



# **MINTO EXPLORATIONS LTD.**

*A Subsidiary of Capstone Mining Corp.*

---

## **MINTO MINE**

## **EMERGENCY RESPONSE PLAN**

**September - 2011**

---

This controlled document will be regularly updated to reflect revisions.

### **Next scheduled update – January 2012**

- Updated Emergency Response Plan (ERP) documents will be bound and distributed to all authorized personnel.
- All Minto Mine personnel must have ERP training and know where to gain access to the document in the event of an emergency.

## **Authorized Distribution / Location List**

### **Minto Explorations Ltd. – Minto Mine:**

Health and Safety Office  
General Manager Office |  
First Aid Room  
Mine Rescue Station  
Mill Control Room  
Refuge Stations

### **Capstone Mining Corp**

Capstone Mining Corp. Vancouver Office

### **Community:**

Yukon EMS Dispatch Whitehorse  
Pelly Nursing Station  
Carmacks Nursing Station  
Yukon Wildland Fire Management Carmacks

### **Government:**

Occupational Health & Safety - YWCHSB

### **Primary Partners/On-site Contractors:**

Selkirk First Nation – Pelly Crossing  
Pelly Construction Site Office  
Dyno Nobel Site Office  
SGS Site Office  
Sodexo Site Office

### **Contractor Specific Emergency Response Plans Related to Minto Site**

Dyno Nobel  
Pelly Construction Ltd

Table of Contents:

1.0 PURPOSE ..... 4

2.0 DEFINITIONS..... 4

    2.1 “Emergency” ..... 4

    2.2 “Serious Injury” and “Serious Accident” under OH&S act ..... 5

3.0 INITIAL RESPONSE TO EMERGENCY MINTO MINE ..... 6

    3.1 Code One Protocol ..... 6

    3.2 Code 1 Procedure for Control Room..... 7

    3.3 Standard FIRST AID PATIENT ASSESSMENT MODEL ..... 7

    3.4 Major Power Failure ..... 8

4.0 FOLLOW UP TO SERIOUS INCIDENT – MINTO MINE..... 10

5.0 SERIOUS INCIDENT RESPONSIBILITY MATRIX..... 11

6.0 MEDICAL EMERGENCY EVACUATION ..... 12

    6.1 Non-Emergency Transfers ..... 13

    6.2 Site or Camp Evacuation ..... 13

7.0 MILL/TAILINGS FIRE ALARM PROCEDURE..... 15

8.0 CAMP FIRE ALARM PROCEDURE..... 16

9.0 UNDERGROUND EMERGENCY ACTION PLAN..... 17

    9.1 “Serious Injury” and “Serious Accident” under OH&S act ..... 18

    9.2 Reporting the Emergency ..... 19

    9.3 Underground Emergency – Other than Fire ..... 19

    9.4 Underground Emergency - Fire:..... 19

    9.5 Under Ground Emergency Evacuation..... 20

    9.6 Refuge Station Code of Conduct..... 20

    9.7 Main Ventilation Control in Event of a Fire ..... 21

    9.8 Underground Emergency Response..... 22

    9.9 Mine Ventilation Action Plan ..... 23

10.0 MINE RESCUE ..... 24

11.0 EMERGENCY RESPONSE EQUIPMENT ..... 30

12.0 BACK UP MINE RESCUE ..... 32

13.0 MISSING PERSON ACTION PLAN ..... 32

14.0 OUTBREAK OF SICKNESS/GASTROENTERITIS ACTION PLAN (Yukon Center for Communicable Disease Guideline)..... 33

15.0 RETURN TO WORK POLICY AND PROCEDURE ..... 35

16.0 EMERGENCY CONTACT INFORMATION ..... 38

## 1.0 PURPOSE

This guide sets out the response protocol in the event of an Emergency as defined in the following section.

It is intended for use as a quick reference handbook for managers and supervisors. Incident reporting and investigating is also outlined.

In an emergency situation it is imperative that due diligence is exercised as well as discretion. The priorities are the protection of LIFE, LIMB and PROPERTY/ENVIRONMENT – in that order.

## 2.0 DEFINITIONS

### 2.1 “Emergency”

An “**Emergency**” is defined as any occurrence meeting one or more of the following criteria:

1. Any “serious injury” or “serious accident” as defined in OH&S 33(1) (see Section 2.2),
2. Any incident requiring first aid or rescue response to the scene,
3. Any fire requiring discharge of a fire extinguisher,
4. Any release of mill process solution outside of containment,
5. Any release of a hazardous product where there is potential for that product to enter a waterway,
6. Landslide, earthquake, avalanche or flooding where injury or property damage results or may result.
7. Major power failure
8. Missing person
9. An alarm of unknown origin
10. Motor vehicle accident
11. Loss of life

## **2.2 “Serious Injury” and “Serious Accident” under OH&S act**

(Excerpt from Occupational Health & Safety Act)

**“Serious Injury”** means:

- a) an injury that results in death,
- b) fracture of a major bone, including the skull, the spine, the pelvis, or the thighbone,
- c) amputation other than of a finger or toe,
- d) loss of sight of an eye,
- e) internal bleeding,
- f) full thickness (third degree) burns,
- g) dysfunction that results from concussion, electrical contact, lack of oxygen, or poisoning, or
- h) an injury that results in paralysis (permanent loss of function);

**“Serious Accident”** means:

- a) an uncontrolled explosion,
- b) failure of a safety device on a hoist, hoist mechanism, or hoist rope,
- c) collapse or upset of a crane
- d) collapse or failure of a load-bearing component of a building or structure regardless of whether the building or structure is complete or under construction,
- e) collapse or failure of a temporary support structure,
- f) an inrush of water in an underground working,
- g) fire or explosion in an underground working,
- h) collapse or cave-in, of a trench, excavation wall, underground working, or stockpile,
- i) accidental release of a controlled product,
- j) brake failure on mobile equipment that causes a runaway,
- k) any accident that likely would have caused serious injury but for safety precautions, rescue measures, or chance. (As amended by SY 1988, c.22, s. 5; SY 1989, c. 19, s.6)

Reprinted from “Occupational Health and Safety with Mine Safety Regulations.”

Yukon Workers’ Compensation Health and Safety Board. Department of Justice, Government of the Yukon. 1992

## 3.0 INITIAL RESPONSE TO EMERGENCY MINTO MINE

### 3.1 Code One Protocol

In the event of an emergency, the following protocol will be followed.

1. Any employee witnessing an emergency will call out on their current radio channel “Code 1, Code 1, Code 1” and state the nature and location of the emergency. (In the event of an injury, first aid certified worker in the area would be alerted to the incident and could respond directly to the scene) The employee immediately changes his radio to channel 1 (Emergency Channel) and calls out “Code1, Code 1, Code 1” and state the nature and location of the emergency. Employee remains on Channel 1 for a response from Site Safety/Medic.
2. Safety Coordinator/Medic will arrange for “Code 1, Code 1, Code 1” to be announced on all radio channels.
3. Upon hearing a Code 1, all personnel will safely stop work, all equipment is to be shut off and all vehicles will safely pull over to the side of the road. Mill and assay lab and water treatment plant personnel will report to control rooms and lunch rooms, while the mill remains operational. Radio silence will be recognized until Code 1 has been cleared.
4. Safety Coordinator/Medic will respond to caller with “What is the nature and location of the Emergency” on channel 1.
5. Employee will then state their name, the nature and location of the emergency.
6. Employee will then follow all instructions given to them by Safety Coordinator/Medic
7. Safety Coordinator/Medic will coordinate the control room operator to send out a page for the ERT with nature and location of the emergency.
8. The Safety Coordinator/Medic will respond to the scene and conduct an initial assessment and assume command of the scene. If Safety Coordinator/Medic is required to treat patients, command is transferred to Health and Safety Superintendent/Officer or Emergency Response Team Captain. Unified Command Structure will be initiated once the General Manager/Area Manager is on scene. **Unified Command is a cooperative effort command. Transfer of command includes a detailed verbal report of the incident and activities conducted and underway.**
9. Only Site Safety can initiate an “All Clear” for all employees to return to regular work.

### ***3.2 Code 1 Procedure for Control Room***

1. When a Code 1 is called, listen for Site Safety to respond to the Code 1 on channel 1.
2. Once Site Safety has confirmed the details of the Code 1, they will direct the control room operator to activate the ERT pagers and call “Code 1, Code 1, Code1” on channels 5,7,14 &16.
3. If no reply heard from Site Safety, activate ERT pagers; announce event and location (if known), e.g.; “Code 1 –Medical emergency in kitchen”, call “Code1 Code1 Code1” on channels 5,7,14 & 16,and then attempt to contact Site Safety on channel 1.
4. Confirm that all Mill personal are aware and have moved to the lunchrooms. (except control room operator)
5. Confirm on all channels that the Code 1 has been heard by calling Code 1 a second time channels 5,7,14 & 16.
6. Stand by the radio during the Code 1 as emergency crews may use the control room as a communications resource. Have emergency contact list ready in case external resources are required to be contacted.
7. Site Safety will take responsibility for clearing the Code 1 on all channels

### ***3.3 Standard FIRST AID PATIENT ASSESSMENT MODEL***

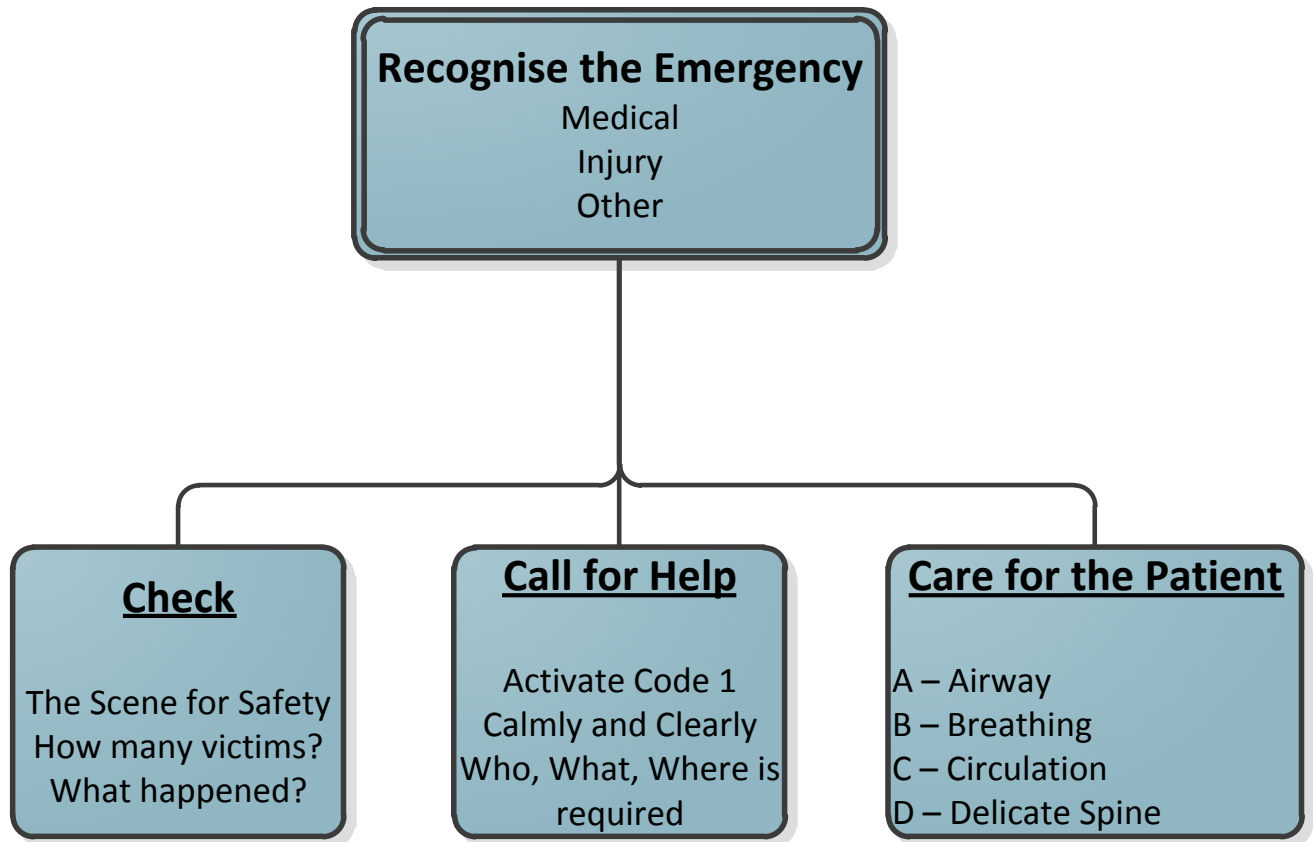
1. **CHECK** - Recognize the emergency
2. **CALL** – Activate Code 1 / first aid to attend the scene
3. **CARE** - Act according to your skills, knowledge and comfort level

A “**medical emergency**” is an illness or condition that needs immediate medical attention. For example:

- Anaphylactic shock
- Diabetic emergency
- Heart attack
- Others

An “**injury**” is damage to the body caused by external force. For example this damage can cause

- Cuts
- Broken bones
- Burns
- Wounds
- Others

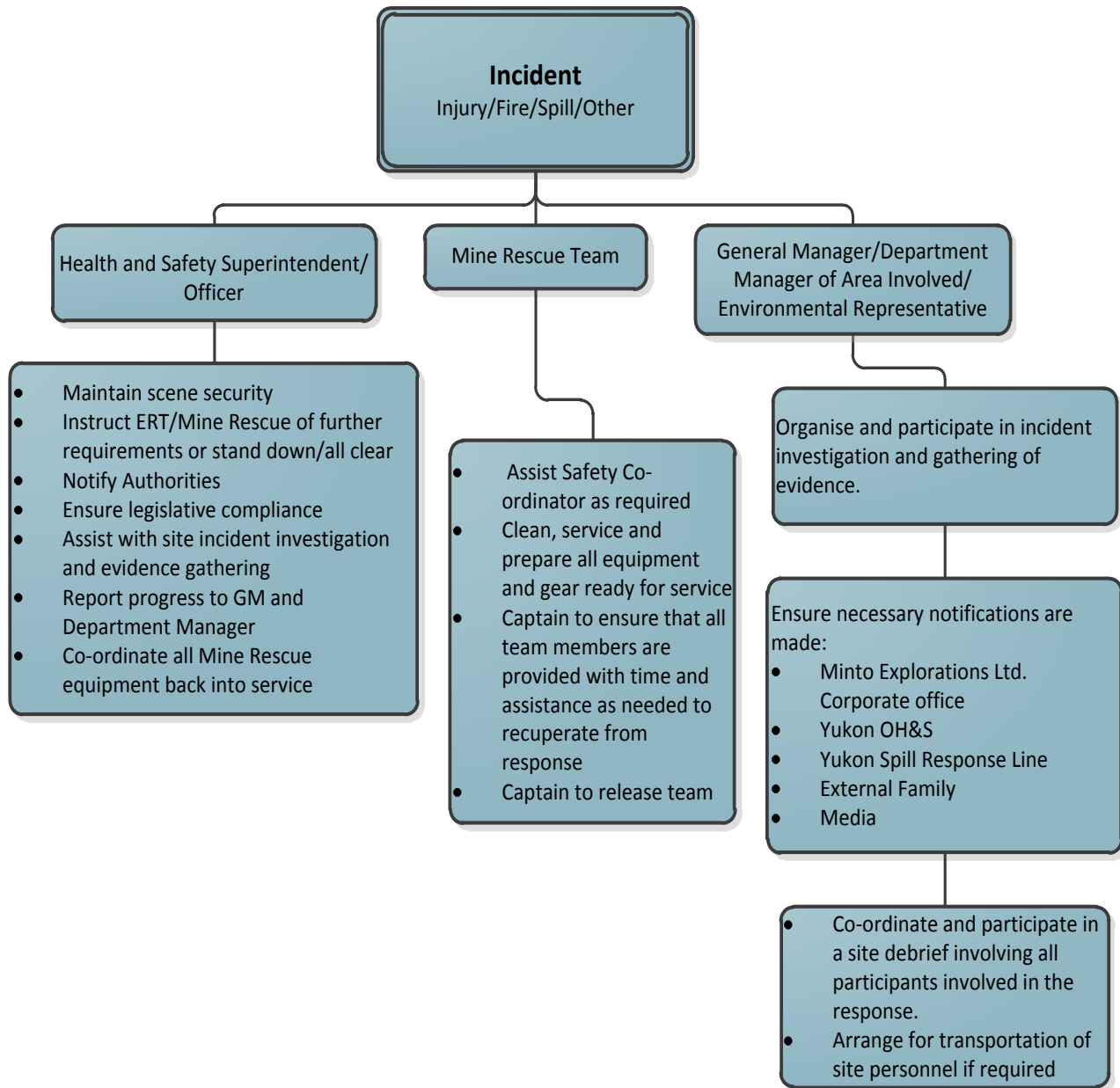


### ***3.4 Major Power Failure***

1. In the event of a major power failure affecting any portion of the operating facilities at the mine, the employees within the working areas need to be aware of the hazards of unexpected loss of power and safely retreat to the nearest control room, lunch room or office to be accounted for by their supervisor.
2. Electrical supervisor needs to be contacted as soon as reasonably possible to assess the reason for the outage, provide alternate power if able and to contact YEC to report outage if applicable. Control room has satellite phone available for this reason.
3. Supervisors will attempt to locate and account for all workers under their control and be available to report the accountability check to Site Safety when requested for it.
4. Safety Coordinator/Medic will coordinate take a sweep through the affected operating area with a source of light to ensure no workers are trapped in a location they could not safely retreat from or are injured from the power failure event and that there is no sign of fire.
5. Once all people are accounted for and it has been confirmed that there is no risk to the people by the power outage operating supervisors will be advised and work can continue or reassigned depending on the job and the location of power failure.
6. Once the power has been restored safe start up procedures must be followed and all work must be directed by the supervisor in charge of the affected areas.



## 4.0 FOLLOW UP TO SERIOUS INCIDENT – MINTO MINE



## 5.0 SERIOUS INCIDENT RESPONSIBILITY MATRIX

POSITION	RESPONSIBILITIES
<b>Safety Coordinator/Medic</b>	<p>Initial scene assessment and Incident Command</p> <p>Coordinate initial response</p> <p>Provide first aid treatment if necessary</p> <p>Mobilize ambulance to scene, if required E.R.T. and specialized resources mobilization &amp; consultation</p> <p>Attend and coordinate response for all incidents involving “serious injury” and “serious accident”, as defined in Sec. 33, OHS Act</p> <p>Notify Area Supervisor, Health and Safety Superintendent,</p> <p>Request additional external resources as necessary and provide history and assessment for medical evacuations</p>
<b>Mine Rescue Team</b>	<p>Maintain team safety as priority</p> <p>Rescue and protect human life</p> <p>Protect and mitigate loss to mine property</p> <p>Assist with rehabilitation of mine property and equipment</p>
<b>Area Supervisor</b>	<p>Coordinate evacuation of work area</p> <p>Account of workers under his/her responsibility</p> <p>Be available to Incident Command for information and assistance requests.</p> <p>Participate with Incident Investigation</p>
<b>Department Manager</b>	<p>Respond to scene and provide Unified Command in conjunction with Health and Safety Superintendent and General Manager</p> <p>Attend at all incidents involving “serious injury” and “serious accident”, as defined in Sec. 33, OHS Act</p> <p>Coordinate and participate in incident investigation process.</p> <p>Ensure follow up action is completed</p>
<b>Health and Safety Superintendent/Officer</b>	<p>Notify General Manager and Department Manager and provide follow up report of progress</p> <p>Assist with accountability</p> <p>Provide for unified incident command</p> <p>Provide direction as required</p> <p>Coordinate recovery and investigative activity</p> <p>Ensure all government reporting has been completed</p> <p>Provide follow up reports to regulatory bodies as required</p> <p>Organize and conduct post-incident debriefings</p> <p>Assist with Incident Investigation</p>
<b>General Manager</b>	<p>Receive briefings on incident details</p> <p>Provide direction as required</p> <p>Verify notification of regulatory agencies, government and Minto Explorations Ltd. corporate office as required</p> <p>Verify scene remains secure until released by regulators (if applicable)</p> <p>Verify compliance with standards and government regulatory requirements</p> <p>Follow up communication to corporate and media</p> <p>Responsible to authorize all off site communication</p>

## 6.0 MEDICAL EMERGENCY EVACUATION

Yukon EMS dispatch is a critical resource in the event of a medical evacuation. Safety Coordinator/Medic will inform Yukon EMS dispatch every instance that there is a change to the site access such as barge removal, ice bridge closure, or the initiation of Ice Bridge or barge operation.

1. Minto Explorations Ltd. Medic will control all medical / trauma emergencies.
2. Upon patient assessment, Medic will determine course of action, including return to work or further medical assessment and evacuation.
3. If medical evacuation is deemed necessary, the Medic will contact Yukon EMS Dispatch @ 867-667-3333 and provide history and assessment findings. EMS dispatch call is a two element call and Medic will need to provide history and assessment twice. The first element dictates the triage of the transfer and the second element is directly to a medical professional responsible for the transfer. These two elements should be available back to back. Yukon EMS Dispatch is responsible for transfer method decision.

<b>Yukon EMS Dispatch</b>	(867) 667-3333
<b>Pelly Crossing Nursing Station</b>	(867) 537-4444
<b>Carmacks Nursing Station</b>	(867) 863-4444
<b>Whitehorse General Hospital</b>	(867) 393-8700

4. All Yukon EMS transfer either by road, air or combination is provided with nursing and paramedic personnel. Air transport is provided flight nurse and flight paramedic. Triage decisions will be made based on patient condition and other emergencies taking place in the area. We are a high priority community as deemed by Yukon EMS and all efforts to supply our needs will be made. One hour plus flight time is the mandate for response by EMS so medic needs to consider that as part of his treatment and care. EMS dispatch provides all patch call information to receiving facilities if they are involved in the transfer in any way.
5. In the event that a transport decision is made without or outside of consultation with Yukon EMS Dispatch, they need to be notified as soon as reasonably possible to provide for additional transport from destination and/or to document transfer decisions made.

## ***6.1 Non-Emergency Transfers***

Ice Bridge + Minto Barge available

1. Non-critical, stable patients that require further medical assessment and do not require medical attention during transfer will be taken off site by a designated Minto Explorations employee at the first available time.
2. Non-critical, stable patients that require further assessment and medical attention during transfer must be taken off site via Ambulance. EMS dispatch must be contacted prior to departure to coordinate the transfer, receiving facility and the possibility of further transfer requirement. If EMS dispatch will not be involved in the actual transfer operation, a call to the receiving facility by Minto Medic is required (patch). If EMS dispatch is involved in any way with the actual transfer they will make the patch calls.
3. Emergency, unstable patients will be evacuated off site through coordination between Minto Medic and Yukon EMS Dispatch. In cases of extreme weather that does not permit landing at the Minto Air Strip, the government Air Strip may be utilized on the east side of the Yukon River.

Alternate helicopter services if required (500ft ceiling, daylight only).

- HeliDynamics: 867-668-3536
- TransNorth Helicopters: 867-668-2177 (Whitehorse) 867-863-5551 (Carmacks)

## ***6.2 Site or Camp Evacuation***

In the event of requiring partial or total evacuation of site, several options are available and must be considered depending on the time of year and availability of transport company provision.

With the exception of medical aid incidents, external resources including evacuation arrangements will be authorized by the General Manager or his designate. Travel arrangements should be coordinated through the travel department or HR and Purchasing department should be involved in all decisions that will result in costs being associated. Designated travel coordinator needs to begin arranging connecting flights or hotel accommodations as soon as evacuation is suspected.

Options for evacuation are by road or air, depending on the time of year and availability of barge or Ice Bridge. Air transportation is dependent on weather and availability of aircraft. Early notification of airlines is critical for preparation of staff and aircraft.

Accurate weather assessment from site is critical to incoming aircraft. Designated person to provide must be arranged.

#### Road accessible

- Transportation by Coach (47passenger/bus) – Whitehorse (Yukon Alaska Charters)
- Transportation by Van – Pelly Crossing (Tom Gill)
- Transportation by onsite bus – Carmacks (on site)
- Transportation by air – Pelly Crossing/Whitehorse (Alkan Air, Air North, Combination)

Staging of people can be accommodated at Yukon Alaska Tours Recreation Facility, Whitehorse airport or local hotels as available. Arrangement for staging needs to be planned and documented to provide a location to communicate further travel or housing options for individuals once arranged by travel coordinator. Consider supplying food and drink to people in staging and ensure communication is available. Documented list of who is where needs to be maintained.

#### Road not accessible

- Transportation by air – Pelly Crossing/Carmacks/Whitehorse (Alkan Air, Air North, Combination)
- Transportation by air/road combination – Air to Carmacks and Air/Coach to White horse. Fuel may need to be arranged to be delivered to Carmacks to refuel planes for multiple flights. The designated air agency will arrange for fuel transfer. Mackenzie Petroleum -867-668-4441 or 867-332-3755 cell, Pace Setter – 867-633-5908, North of 60 – 867-633-8820.
- Bus to river crossing and helicopter (Trans North Helicopters) transfer across river to Coach (Yukon Alaska Charters).

Staging of people can be accommodated at Carmacks Air Terminal. Consider supplying food and drink to people in staging and ensure communication is available. Documented list of who is where needs to be maintained.

## **7.0 MILL/TAILINGS FIRE ALARM PROCEDURE**

1. Activation of Emergency Protocol by Control Room Personnel [calling code 1 to initiate Site Safety and ERT response].
2. All non-control room personnel in Mill/Tailings are to proceed to nearest exit point and proceed to MUSTER STATION located near office complex.
3. Medic will move Ambulance out of Ambulance Bay and into front courtyard, not to be blocked by any vehicles.
4. Control Room will advise Incident Command of Alarm location.
5. Incident Command will advise Control Room personnel on whether or not to evacuate Control Room.
6. Once evacuated from Mill, all personnel are to proceed to MUSTER STATION, which is located to the west of the mill near office complex.
7. All personnel are to remain located at MUSTER STATION unless advised by Site Safety/ERT.
8. ERT will operate under the direction of Incident Command. Team Captain responsible for team tactical operation and direct accountability of team.
9. No personnel are to block Emergency Response vehicles, Ambulance or Equipment.
10. Health and Safety Officer/Superintendent will request accountability sheet from camp administration office. Roll call will be conducted with the area supervisors responsible within their groups.
11. Only Incident Command can advise Control Room to disengage Fire Alarm after investigation of cause.
12. No personnel will be allowed back into Mill without all clear declared by Incident Command.
13. Failure to evacuate Mill will result in disciplinary action, which may result in termination.

## 8.0 CAMP FIRE ALARM PROCEDURE

1. Activation of Emergency Protocol by Kitchen Staff or first person recognizing alarm [calling code 1 to initiate Site Safety and ERT response].
2. All personnel in Camp affected by alarm are to proceed to nearest exit point and proceed to Muster Station (located at North end of camp).
3. Once at the Muster Station, staff are to stand behind company signs to assist roll call.
4. Camp Manager will bring accountability sheets to Muster Station and meet Health and Safety Superintendent/Officer to assist with roll call (roster sheets are updated daily and are located on the board just inside kitchen entrance). Area supervisors will assist as required and directed by camp manager or H&S Superintendent/Officer.
5. Employees working in camp (site services, Sodexo, maintenance) will report to muster station and be accounted for by their supervisor. The supervisors will advise H&S Superintendent/Officer of any missing people.
6. H&S Superintendent/Officer will relay accountability information to Incident Command (Safety Coordinator or ERT Captain).
7. ERT will respond to the ERT trailer and don turnout gear and prepare SCBA. Once sufficient number of team members is prepared, ERT captain will contact Safety Coordinator/Medic on radio Chanel 1 for response and staging instructions.
8. ERT will gather required gear, source vehicle from immediate area and respond to scene in a safe manner.
9. ERT Captain will assume command of the team as they enter the camp to assess information from the fire panel. ERT Captain will report to IC the status of the location of the alarm.
10. IC will develop plan of action with the ERT captain. ERT captain will direct team in conducting interior search, rescue and firefighting options.
11. ERT captain will inform IC of standard milestone fire ground activities such as entering building, time under air, smoke/fire found, victims located, fire stop, etc.
12. All employees will remain at Muster Station until "All Clear" is given by Site Safety or instructed to move to alternate location.
13. Failure to evacuate Camp will result in disciplinary action, which may result in termination.

## 9.0 UNDERGROUND EMERGENCY ACTION PLAN

In an emergency situation it is imperative that due diligence is exercised as well as discretion. The priorities are the protection of **LIFE, LIMB and PROPERTY** – in that order

All SERIOUS reportable incidents / accidents require notification of the YT OH&S Mine Inspector as defined in the Occupation Health and Safety Act – Mine Safety Regulations

**“Underground Emergency”** means:

Any unforeseen circumstances, unusual occurrences or resulting state which may endanger lives or the workings of the mine. This emergency may call for immediate action from management and or trained mine rescue, fire and first aid personnel.

Emergencies may include:

- Personal injury
- Loss of life
- Unexpected / Unintentional explosion
- Fire / Heat / Smoke
- Falls of ground
- An inrush of water
- Equipment failure
- Power Failure
- Loss of main ventilation
- Major earthquake
- Situation on surface requiring evacuation of underground

## 9.1 “*Serious Injury*” and “*Serious Accident*” under OH&S act

(Excerpt from Occupational Health & Safety Act)

33. (1) in this section,

“**Serious Injury**” means:

- i) an injury that results in death,
- j) fracture of a major bone, including the skull, the spine, the pelvis, or the thighbone,
- k) amputation other than of a finger or toe,
- l) loss of sight of an eye,
- m) internal bleeding,
- n) full thickness (third degree) burns,
- o) dysfunction that results from concussion, electrical contact, lack of oxygen, or poisoning, or
- p) an injury that results in paralysis (permanent loss of function);

“**Serious Accident**” means:

- (l) an uncontrolled explosion,
- (m) failure of a safety device on a hoist, hoist mechanism, or hoist rope,
- (n) collapse or upset of a crane
- (o) collapse or failure of a load-bearing component of a building or structure regardless of whether the building or structure is complete or under construction,
- (p) collapse or failure of a temporary support structure,
- (q) an inrush of water in an underground working,
- (r) fire or explosion in an underground working,
- (s) collapse or cave-in, of a trench, excavation wall, underground working, or stockpile,
- (t) accidental release of a controlled product,
- (u) brake failure on mobile equipment that causes a runaway,
- (v) any accident that likely would have caused serious injury but for safety precautions, rescue measures, or chance. (As amended by SY 1988, c.22, s. 5; SY 1989, c. 19, s.6)

*Reprinted from “Occupational Health and Safety with Mine Safety Regulations.”*

*Yukon Workers’ Compensation Health and Safety Board. Department of Justice, Government of the Yukon. 1992*

## **9.2 Reporting the Emergency**

Where an EMERGENCY exists that may affect mine personnel, evacuation procedures must be initiated.

## **9.3 Underground Emergency – Other than Fire**

Any person discovering an emergency shall:

1. If safe to do so try to rectify the situation with the tools you have at the scene
2. Perform first aid if safe to do so
3. Rope off or barricade the area if possible
4. Escape to nearest refuge station following up cast ventilation or out of the mine and warn all others along the way.
5. Report the emergency by calling the appropriate numbers from the Emergency Contact Number sheet located in the refuge station
  - When reporting the incident it is of extreme importance that you include the following information.
  - Who is calling and who is involved?
  - What happened and what have you done?
  - When did this happen?
  - Where are you and where is the emergency?
  - Who and what do you need for a response? First aid, rescue stench gas, other assistance?
  - Stand by the phone and wait for further instructions

## **9.4 Underground Emergency - Fire:**

Where a fire exists that may affect other personnel working in the area, evacuation procedures must be initiated:

Anyone discovering a fire shall:

1. Activate fire suppression system if fire is on equipment.
2. If safe to do so, use nearby fire extinguishers to extinguish the fire.
3. Warn all personnel in the immediate area (voice, radio, and phone) to evacuate to a safe location.
4. Initiate the Stench Warning System.
5. Do not expose yourself to unnecessary risk and keep a clear area of retreat behind you.
6. If the fire is too big, do not hesitate, leave the area immediately and evacuate.
7. Proceed in up cast direction to nearest refuge station, fresh air base or out of the mine if safe to do so.
8. Utilize self-rescue device to protect from smoke exposure.
9. If unable to travel safely to refuge station, take refuge in heading and utilize compressed air header and any available material – vent tubing, clothing, etc. to construct a shield around yourself. Remain in the location until mine rescue team arrives.
10. Once you have reached the refuge station or fresh air base follow refuge station protocols and provide for accountability.

## ***9.5 Under Ground Emergency Evacuation***

Upon being notified of a mine emergency evacuation either by radio, phone or stench warning system:

1. Stop work immediately,
2. Note the time you received the warning
3. Calmly proceed in an up cast direction to the nearest refuge station or out of the mine
4. Utilize self-rescue device at the first sign of smoke or fire.
5. Once safely at the refuge station or central muster location, follow the refuge station protocol and provide for accountability.
6. Review the refuge station emergency procedures posted inside the refuge chamber.
7. Check the mine phone for operation and call outside the mine. Report the following information:
  - Your name and name of others in refuge.
  - Refuge Chamber location.
  - Outside conditions.
  - That you are safe in refuge.
8. Remain in the refuge station, even if communication is cut off.
9. Stay calm, conserve energy and cap lamps, sit down on benches.
10. Have one person walk around room periodically to stir up the air.
11. Do not be tempted to wander about the mine seeking safe passage out.
12. Remain in the refuge until you are rescued by mine rescue personnel or contact is made declaring it safe to leave the refuge station by mine official in charge of the emergency.

## ***9.6 Refuge Station Code of Conduct***

In the event that it is found necessary to use this refuge station for emergency survival the following information will assist you in succeeding in a constructive and safe manner.

The first person to arrive at the refuge station should record the names and health status of all individuals as they arrive at the refuge station. This information will need to be communicated right away.

Someone has to be appointed “in charge”. This person must have leadership qualities and have a good understanding of mine rescue and mine survival procedures. This individual must maintain good discipline and have the ability to assure and calm down anyone in the refuge station who may be claustrophobic or inclined to panic. Once a captain has been chosen their directions should be supported by the balance of the team. The captain must keep everyone calm and focus on securing the integrity of the refuge station and maintain communications with surface if possible.

It is up to the team to ration air supply, water supply, food supply, and lighting.

Oxygen must be conserved in the event that the mine compressed air fails. A person at rest in a calm state of mind requires far less oxygen than someone excited and active. An average person consumes the oxygen in the air at about 0.75 cubic meters (1 cubic yard) of air every hour. An area 10 feet wide x 10 feet high x 10 feet long contains enough oxygen to sustain one person for 36 hours. Everyone should remain calm and limit their physical activity. One person should be delegated to move around on a regular basis to check the physical condition and emotional state of the team. This will also physically stir and mix air around the refuge station.

Remember that carbon dioxide is heavier than air and will migrate to the floor. It is not wise to lie on the floor for this reason. This is also the reason why one person should move around occasionally to mix the carbon dioxide with the ambient air. Smoking should not be permitted.

All lamps should be turned off and kept off while mine electricity is still available. If the outside power supply is interrupted then the lamps should be used one at a time. The balance of the lamps should be gathered up by the captain and rationed just like the air, water, and food. The lack of light for long periods of time can affect the emotional state of some people so conserving the lamp power should be taken very seriously by all.

Any injured survivors must be treated with the existing first aid equipment in the refuge station and in the emergency basket. This includes minor cuts and wounds to prevent infection from setting in. The responsibility of the team safety is paramount to the captain. The survival of the whole team depends on this and is why everyone involved in a disaster should cooperate and support to the best of their ability.

### **9.7 *Main Ventilation Control in Event of a Fire***

In the event of an underground fire, efforts will be undertaken to ensure ventilation to the mine is maintained.

Operation of the main ventilation fans in will be guarded and monitored to ensure continuous operation of the fans at all times.

The effects of the alteration to the main ventilation fans shall be clearly understood before any changes are made.

During a mine fire:

There will be no alteration to the operation of the main fans without the authorization of the Mine Manager or Designate. Notification to YWCHSB Safety Officer as defined under the regulations.

## 9.8 *Underground Emergency Response*

### Underground Emergency – System of response

1. Initiate mine rescue/emergency response notification procedures as directed by UG Shift boss or designate.
2. Upon completion of the emergency response notification procedure:
  - a) Assign designate to initiate and maintain a log of events.
  - b) Establish the COMMUNICATION CENTER.
  - c) Keep all Communication Equipment on Standby.
  - d) Direct operations personnel to COMMUNICATION CENTER.
  - e) Confirm Incident Command (IC) has been initiated.
  - f) Complete the EMERGENCY DATA SHEET by obtaining the following information:
    - Name of person reporting the emergency
    - Nature and severity of injuries and/or incident
    - Assistance required
    - Location of emergency
    - Number of people involved
3. Operations personnel will delegate a mine official in charge of the rescue operation and develop a preliminary plan.
4. Mine rescue team will respond to the mine rescue room
5. Mine rescue team captain will assume command of the team
6. Team will don all protective gear and bench test SCBA
7. Team will prepare all equipment needed to respond UG
8. Team will await instructions by Mine Rescue Coordinator (Safety Coordinator/Medic/Health and Safety Superintendent)
9. Team will be advised of plan
10. Back up Mine Rescue team respond to mine rescue room for briefing and preparation for back up assistance.
11. Tertiary back up mine rescue team(s) must be considered and depending on the initial assessment of situation contact needs to be made for mutual aid as soon as reasonably possible.

## 9.9 *Mine Ventilation Action Plan*

In the event of fan failure due to a malfunction, accident, power failure, or other such unplanned or unscheduled event, this action plan applies to all underground employees and contractors whose work areas are affected by the temporary interruption of the operation of the main, booster, or auxiliary fans in the mine.

### **Main Ventilation Interruption Procedure:**

#### **Less Than 2 Hours:**

1. Diesel mobile equipment, mucking operations, will cease in all active production and development headings supplied by mechanical ventilation until the main ventilation system is restored. ... OR ... The active heading is continually monitored for air quality and is maintained in compliance with the applicable standards.
2. All other work relevant (scaling, clean-up, maintenance, etc.) to the active heading may continue per normal operations provided the air quality remains in compliance with the applicable standards.
3. Diesel mobile equipment for access to, or egress from, the mine will continue per normal mine operations provided air quality remains within compliance of the standards. **If the ventilation is forced the diesel equipment must be shut down until ventilation is re-established.**

#### **Two Hours or More:**

1. Air quality testing will be performed by Supervision in all active headings affected by the ventilation interruption. Where air quality is not within compliance of the standards for mine ventilation, all personnel shall be withdrawn from the active heading affected.
2. Ventilation to the affected active headings shall be restored to normal and the air quality in the affected active workings shall be tested by Supervision to ensure the air quality meets the requirements of the standards prior to the return to work in the area.
3. Prolonged ventilation interruption will require air quality testing in the affected active workings at least every four hours until ventilation has been restored.
4. In areas where air quality prevents continued testing, normal ventilation shall be restored for a minimum of two hours before persons enter the area to test air quality ... OR ... Suitable self-contained breathing apparatus and procedures consistent with YWCHSB Regulations will be followed by competent persons to perform air quality testing the affected area.
5. Diesel mobile equipment for access to, or egress from, the mine on the main haulage ways will continue per normal mine operations provided air quality remains within compliance of the standards.
  - a. **This is contingent on the mine having flow through exhaust. If the ventilation is forced the diesel equipment must be shut down and the mine evacuated until ventilation is re-established.**

Mine Quality Air Standards		
OXYGEN	Minimum 19.5%	Normal air is 21% oxygen
CARBON MONOXIDE	Permissible limit 35 PPM	
NITROGEN DIOXIDE	Permissible limit 3 PPM	
SULFUR DIOXIDE	Permissible limit 2 PPM	

## 10.0 MINE RESCUE

Minto Explorations will require a compliment of 12 trained underground mine rescue personnel on site at all times. The mine rescue unit consists of a **minimum** of three mine rescue teams summoned to a mine disaster; if the operation extends beyond 6 to 8 hours, additional teams must be called in. In order to reduce fatigue, the teams are rotated to allow one team at work, one team on hand as backup and the third team at rest. A typical rotation for a three □ team unit is as follows:

### **Team Working/Backup Team/ Team at Rest (2 hour maximums)**

A team/ B team/ C team

B team/C team/ A team

C team/A team/ B team

Teams have approximately 4 hours rest prior to working for 2 hours.

### **Back up Mine Rescue Teams**

If the operation extends beyond 6 to 8 hours, additional mine rescue teams must be called in. A mutual agreement with other mines will have to be drafted to ensure backup if required. A list of local mine rescue personnel could serve as back up in the event these individuals are on their rotation off and are in fact home.

Minto Explorations Ltd. has in place cooperative agreements with the Alexco Resource Corp. at the Bellekeno Mine as well as divisions of Procon Mining and Tunnelling.

If the incident requires Mine Rescue back up response the YT OH&S Mine Inspector and Alexco Resource Corp must be notified immediately, advised of the situation and to prepare to respond immediately pending available resources.

## **Recruitment**

In order to achieve this Minto will have to conduct some aggressive recruiting. Given our employee base we may require contractors to step up. We need to promote experienced personnel first, active and inactive. We can then assess how many green recruits we need.

Recruiting by way of posters and meetings can take place in February 2011. It is encouraged that the company hire only experienced mine rescue personnel for the underground project. This will reduce our training time, costs and impact on our workforce.

## **MINIMUM QUALIFICATIONS**

Candidates for mine rescue training must meet the following minimum requirements:

- Minimum age of 18 years.
- Speak, read and write English.
- Be in good physical and mental condition.
- Be familiar with mining conditions, practices, hazards and equipment.
- Have no perforated eardrums (tympanic membrane).
- Hold a valid St. John's Ambulance Standard First Aid Certificate or its equivalent.
- Hold a Survival Mine Rescue Certificate (if employed in underground mining).
- Have facial hair shaved to the point it does not interfere with the seal on breathing apparatus

## **Mine Rescue Certification**

The Basic Underground or Surface Mine Rescue Certificate will be issued to candidates who successfully complete the training course following the YWCHSB criteria. The candidate must attain a passing grade upon examination. This score is a combined average of a written exam, oral exam, and physical testing.

## **Training**

The safety department will require a full commitment from the departments to free up their candidates for the initial training. Time missed will fail the student. It is suggested that class is taught in 4 hour sessions. Two hours could be during normal shift and 2 hours of OT making the shifts 14 hours instead of 16. This will have less impact on the work crews and makes a shorter day. Each module will be covered in the handbook with tests for each. A practical evolution is involved in each session. A total of 8 classes will cover the entire training, 32 hours. This training may be complicated as we are dealing with shift configurations and the end product is to have good rescue personnel distribution among all crews. Support from supervisors is critical for our success.

Minto Explorations can provide in house standard HCP Red Cross first aid certification for all candidates.

## Equipment

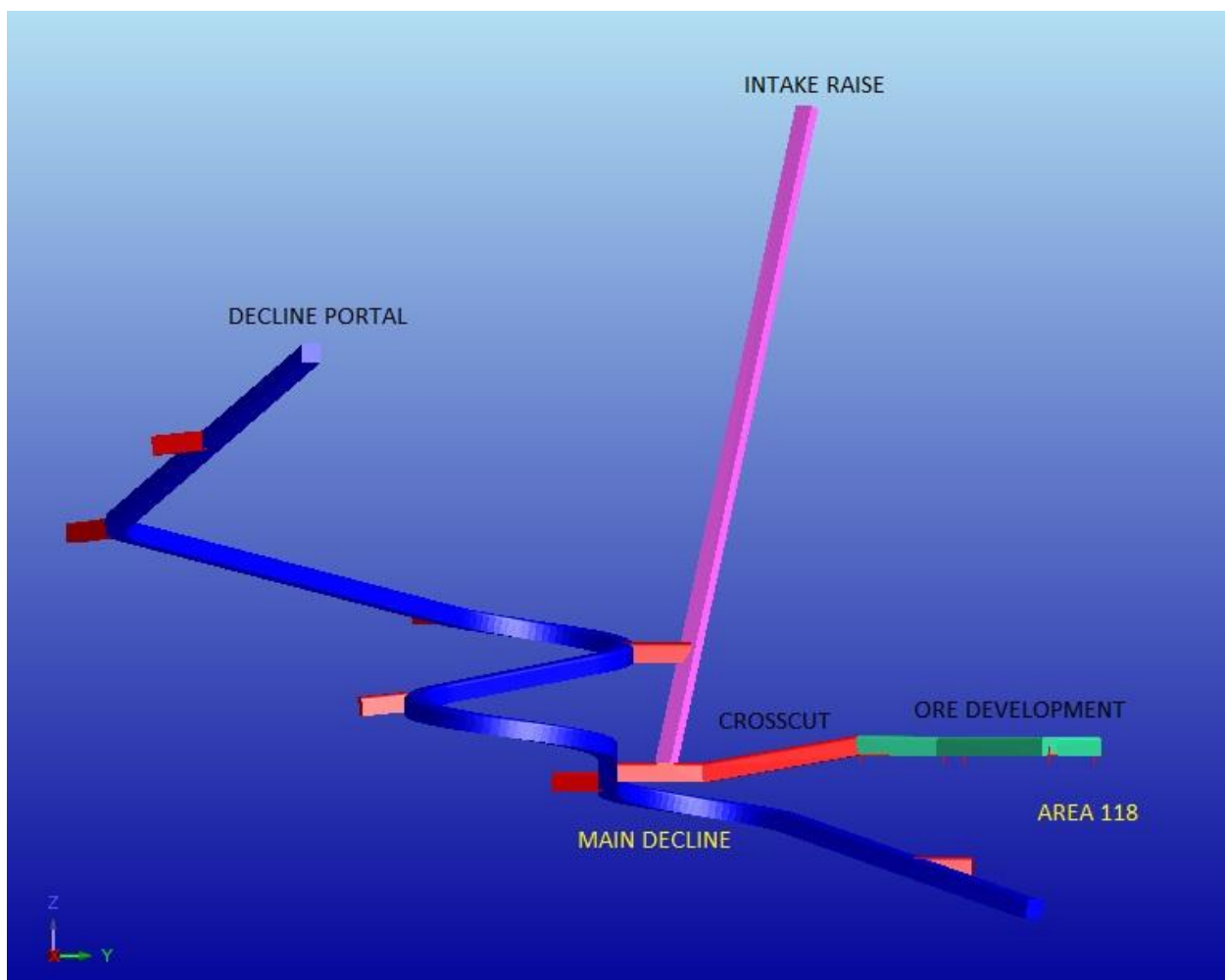
- Twelve Dragger BG4s and all equipment required to clean, maintain and refill.
- Four Ocenco EBA 6.5 emergency rescue breathers
- One trainer Ocenco EBA 6.5 emergency rescue breather
- 12 MSA W65 self-rescuers
- 12 underground cap lamps
- 12 miners belts
- 12 48" link lines (lanyards)
- One spare stretcher basket complete with U/G rescue tools.
- Two multi gas testers
- One anemometer

# Minto Exploration Ltd Development Decline

## Mine Safety Plan for first 300 meters

### General

The exploration decline will be of a five by five meter dimension by 500 meters in dept. Safety bays and sumps will be set up on the right side of the drift with all the remucks on the left side. The drift will be driven by an experienced rotating work crew of 16 miners. Work crews will be all ticketed and experienced mine rescue personnel. Each work crew will consist of four men and will have a ticketed shift boss in addition to the four man crew. At any given time there should only be two men working at the face. The target is to advance 100 to 125 meters per month.



### Ground Control

Ground control will consist of rock bolting and screening a 4x4 pattern using 1.8 metre resin bolts. Screening will come down the rib to about 48" from the bench. For an added measure of safety shotcret will be available and applied as required

## Safety

A single **vent fan** set up at the portal entrance a safe distance away will provide adequate ventilation for the first phase of the drift. A standard stench gas warning system will be tied into the surface ventilation system with the ability to manual activate from surface. A back up Alimak vent raise 3 meters by 5 meters will eventually be driven to the surface as development progresses. This vent raise will be equipped with ladders and metal landings and will also serve as the back-up emergency escape route. A firefighting hose station will be set up in proximity of the portal. Safety bays will be located along the drift every 30 meters equipped with reflective signs for identification and scaling bars. The safety bay closest to the working face will be equipped with an industrial sized metal “Job Box “with emergency equipment inside. Basic contents;

- Six Ocenco EBA 6.5 Escape breathing apparatuses good for 8 hours each.
- Six spare MSA W65 Self –Rescuers
- One level 3 first aid kit
- One oxygen therapy unit
- Splints, c-collar, six spare emergency blankets
- Five gallon jug of fresh water
- Mainstay Freeze dried dehydrated food bars (good for 5 years)
- Back up emergency lighting
- Toiletries as required.

Communication will be via coaxial cable Leaky Feeder System.

Upon reaching the 250 meter mark in the drift a **C-CAN Refuge Station** will be stationed to protect miners in the event of dangers. The refuge station will be equipped with posted emergency procedures, telephone emergency communication systems, firefighting equipment, piped-in fresh air, piped in water, stretcher, spine board, trauma kit, emergency blankets, first aid supplies, emergency breathing apparatus, drinking water and such other emergency supplies as circumstances at the mine may dictate.

## Rescue

All underground personnel during this exploration phase of the drift will be ticketed underground mine rescue trained. In addition six existing Minto Mine employees presently possess valid underground and surface mine rescue certification. This will bring the total to 26 ticketed underground mine rescue personnel. Mine Rescue training and instruction will be conducted weekly by the sites safety department which has 2 ticketed underground and surface mine rescue instructors.

**Rescue Equipment** will be stored in a trailer on surface and will consist of 6 Draeger BG4 self-contained closed circuit breathing apparatuses, 2 fully equipped stretcher baskets, picks, shovels, scaling bars, rechargeable saws, rope, tackle, mechanical advantage hardware, foam fire suppression equipment, fire hoses, nozzles, axe, hammers, nails, etc.

A firefighting hose station will be set up in proximity to the portal. The design will be that of a 2.5 inch water valve with ability run several lengths of 2.5 inch fire hose off of it to a gated “Y”. The gated “Y” reduces from 2.5 inches to 1.5 inches and splits to two 1.5 inch fire lines to the fire, foam nozzles utilized if required. A supply of AFF foam, nozzles, hoses and extinguishers will be stored in the hose station and readily available. A wheeled foam machine will be available for filling a drift in the event of equipment fires underground.

## U/G Equipment

Equipment will consist of the following;

- One 2 boom electric jumbo
- Two 6 yard scoops
- Two 40 ton rock trucks
- One scissor deck
- All required ancillary mining equipment including shotcret.

All equipment will be equipped with fire suppression / ROPS/ FOPS/ and required diesel permitting and exhaust scrubbers.

## Mine Rescue Personnel

Name	Agency	Capacity
Bissell, Keith	Minto Exploration	Surface Mine Rescue/ERT
Christian, Tyler	Minto Exploration	UG/Surface Mine Rescue/ERT/OFA 3
Crottey, David	Minto Exploration	Surface Mine Rescue/ERT/OFA 3
Davies, Kheil	Minto Exploration	Surface Mine Rescue/ERT
Goebel, Mark	Minto Exploration	UG/Surface Mine Rescue Instructor/OFA 3/PCP
Henry, Garth	Minto Exploration	Surface Mine Rescue/ERT/EMR
Michelson, Richard	Minto Exploration	Surface Mine Rescue/ERT
Monteith, Tyrone	Minto Exploration	Surface Mine Rescue/ERT
Plater, Adam	Minto Exploration	Surface Mine Rescue/ERT/Captain
Silverfox, Ryan	Minto Exploration	Surface Mine Rescue/ERT
Spruit, Arjen	Minto Exploration	Surface Mine Rescue/ERT/OFA 3/EMR
Swanson, Jeremy	Minto Exploration	Surface Mine Rescue/ERT/Captain
Wettstein, Curtis	Minto Exploration	Surface Mine Rescue/ERT
Daley, Mike	Minto Explorations	UG/Surface Mine Rescue Instructor/OFA 3
Kowalyshen, Bryan	Pelly Construction	Surface Mine Rescue/ERT
Cowman, Graham	Fountain Tire	Surface Mine Rescue/ERT
Stewart, Mike	Minto Explorations	UG/Surface Mine Rescue/ERT/OFA 3

## 11.0 EMERGENCY RESPONSE EQUIPMENT

### 11.1

EMERGENCY EQUIPMENT	LOCATION	USE IS AUTHORIZED BY:
<b>Ambulance</b>	Minto Ambulance Bay	Safety Coordinator/Medic ERT Captain
<b>Medical Jump Kits</b>	First Aid Room Medic room	Safety Coordinator/Medic
<b>AED</b> 2 Automatic External Defibrillators	Minto Ambulance First Aid Room	Safety Coordinator/Medic
<b>Oxygen Airway Adjuncts (OPA)</b>	First Aid Room Jump Kits Ambulance	Safety Coordinator/Medic ERT Captain
<b>Spinal Precautions</b> Spine Boards & Head Blocks Stiff Collars Spider Straps KED – Vehicle extrication device	Ambulance and Mine Rescue Room	Safety Coordinator/Medic ERT Captain
<b>Splints</b> Regular Sager traction splint	Ambulance and Mine Rescue Room	Safety Coordinator/Medic
<b>Wound Management Burn Dressings</b> Sterile Water Bandages & Dressings	First Aid Room Jump Kits Ambulance	Safety Coordinator/Medic
<b>EPI Pens</b> Anaphylactic Shock / Allergies	First Aid Room Jump Kits Ambulance	Safety Coordinator/Medic
<b>SCBA</b> 6- Scott 2.2	Mine Rescue Room	Safety Coordinator/Medic ERT Captain

2 – Scott 4.5 12 – Spare bottles		
<b>Lifting/Moving Bags</b>	Mine Rescue Room	Safety Coordinator/Medic ERT Captain
<b>Chain Saw</b>	Mine Rescue Room	Safety Coordinator/Medic ERT Captain
<b>Gas Detection</b> 4- BW Gas Alert Micro 5	Mine Rescue Room Ambulance Bay	Safety Coordinator/Medic ERT Captain
<b>Generator and Flood Lights</b>	Mine Rescue Room	Safety Coordinator/Medic ERT Captain
<b>Radios</b> 6 – Motorola	Mine Rescue Room Ambulance Bay	Safety Coordinator/Medic ERT Captain
<b>Rope Rescue Equipment</b>  6 – Ropes Compliment of hardware including descending devices, pulleys, mechanical advantages, rope grabs, harnesses, helmets, etc.	Mine Rescue Room	Safety Coordinator/Medic ERT Captain
<b>NFPA Turn Out Gear</b>  10 sets including boots, gloves, Helmets and balaclavas.	Mine Rescue Room	Safety Coordinator/Medic ERT Captain
<b>Hazmat Response Equipment</b> Protective clothing, sorbents, Over pack, hand tools.	Mine Rescue Room	Safety Coordinator/Medic ERT Captain
<b>Confined Space Rescue</b> SKED Stretcher / Tripod Stokes basket with spider straps	Mine Rescue Room	Safety Coordinator/Medic ERT Captain

## 12.0 BACK UP MINE RESCUE

Agency	Contact Personnel	Office Contact Number	Home Contact Number
YT OH&S Mine Inspector	Robert Scott	867-667-8739	1-800-661-0443 (toll free)
Alexco Resource Corp	formal plan in draft	867-996-2330	
Procon Mining	formal plan in draft	604-291-8292	

## 13.0 MISSING PERSON ACTION PLAN

Potential exists where persons may become lost on or traveling to and from the property. Such incidents can occur under the following circumstance:

- Employee or Contractor personnel engaged in surface exploration, travel or any other activities are overdue and cannot be located or contacted.

Upon notification that personnel are unaccounted for on the property you should:

1. Immediately advise the Area Supervisor, Safety Designate and Area Manager
  - Designate a mine official in charge of the search and communications/planning.
  - Assess and determine the level of response required.
  - Gather all available information about the missing persons including last known location.
  - Advise the RCMP of the circumstances and request further assistance

- Designate ERT/Mine Rescue to stand-by and assist the RCMP in search efforts as directed
  - Any search activity needs to be coordinated through the mine official in charge of the search. Search by vehicle should be conducted with two people in each vehicle, in coordination with RCMP and have effective communication and plan in place prior to conducting search.
  - Survival gear, rescue tools, tow straps, fuel, etc. should all be considered and taken along during search activities.
2. Stand-by to provide further information and assistance as required.
  3. Once search is complete follow up notification to all involved must be conducted including RCMP.
  4. Provide for follow up investigation to identify contributing factors and recommend future prevention actions.

## **14.0 OUTBREAK OF SICKNESS/GASTROENTERITIS ACTION PLAN (Yukon Center for Communicable Disease Guideline)**

### **Case Definition for Outbreak:**

- At least one of the following must be met: Two or more liquid or watery stools above what is normal for the person within a 24-hour period, OR
- Two or more episodes of vomiting in a 24-hour period, OR
- Both of the following: (a) lab confirmation of a known enteric pathogen and (b) At least one symptom compatible with gastrointestinal tract infection (i.e. nausea, vomiting, diarrhea, abdominal pain or tenderness)

### **Outbreak definition:**

- Three or more cases of gastroenteritis infection (as defined above), potentially related, occurring within a four day period, within the facility.

### **Case characteristics:**

- Abrupt onset of diarrhea and vomiting
- Fatigue and occasional low-grade fever
- Average duration 18-24 hours, rapid recovery

### **Suspected etiology:**

- Noro type virus. Confirmation by obtaining sample and sending in for analysis. Sample kit available in first aid and instructions are attached.

## Response measures:

1. Sick bay and isolated washroom facilities needs to be provided. Minto Manor and Exterior Wash car need to be readied for service by Sodexo.
2. A second area made available for post-acute, recovering patients.
3. Communication to site informing of the situation and requesting people to report illness and use strict personal hygiene practices.
4. Cleaning of the quarantine areas undertaken by people informed of the risks and trained in the protection required. Food must be delivered, provisions for hydration need to be ensured. Electrolyte replacement fluids should be provided. Squincher is currently being placed into warehouse stock.
5. Cleaning of all other areas using Virox or bleach solution: 3x per day bathrooms and corridors and common rooms.
6. Kitchen and dining areas are cleaned on a continual basis
7. Discontinue communal food dispensing (salads, etc.) All food portions individually wrapped.
8. Contact Yukon Communicable Disease Control to advise of outbreak.
9. Consider notification of offsite personnel that may be scheduled to come into camp during outbreak and decide on travel restrictions, interruptions during the period

## Recommendations for ongoing management of outbreak

- A. If decline in case numbers to sporadic or nil:
  - Laundering of all bedding: sheets, pillow cases, and quilts or blankets
  - Laundering of all clothes used by or exposed to sick individuals.
  - Cleaning of all surfaces with standard veridical disinfectants (bleach or Virox).
  - Clothes that have been stored and unexposed to sick persons can be left in place
  - Any drawers, shelves, etc. used by sick individuals should be cleaned.
1. **If sporadic new cases (1 to 2 per day):**
  - Continue use of Sick Bay and isolation area
  - Continue food preparation precautions
  - Allow new staff in but with briefing on situation and need for vigilant personal hygiene
2. **When no new cases reported for at least 48 hours:**
  - Terminal cleaning of isolation areas, cleaned as above with Virox or bleach solution. Designate and maintain a smaller isolation area for possible new cases over next 2 to 4 weeks
  - Allow new staff to come in for normal tour of duty
  - Return to normal food preparation

**B. If continued high numbers (more than 3 new cases per day) or escalation of cases:**

- Continue isolation/sick bay area with appropriate cleaning regimen
- Continue daily monitoring of new cases and their origin (bunk house)
- If more than one new case per bunk house, undertake intense cleaning of entire affected bunk.
- Close non-essential common areas
- Allow no in-rotation in of new personnel
- Consider camp closure according to demands on personnel

**C. If continued high or increasing numbers despite measures in B. being followed:**

- Close camp with clean out of entire camp: bunkhouses, food preparation and consumption areas, offices, common rooms and all non-industrial sites.
- Allow reopening of site following clean up.

**D. If apparent cessation of outbreak followed by new cases after 48 hours or more:**

- Follow recommendations as in B and C above.

## **15.0 RETURN TO WORK POLICY AND PROCEDURE**

### **Policy**

Minto Explorations Ltd. believes that the health and safety of its employees is fundamental to its business operation. We strive towards zero accidents and are committed to continuous improvement in safety daily. In the unfortunate event of a worker suffering an injury or illness during their service at Minto Explorations Ltd., we maintain a return to work program providing clear and open consultation between management, the ill/injured worker, medical professionals and Yukon Workers Compensation Health and Safety Board. We will strive to accommodate the ill/injured worker considering modified work sensitive to abilities and restrictions dictated by the medical professionals involved. It is our desire to work towards the healthy recovery and timely transition of ill and injured employees back to work at Mino Explorations Ltd. operations.

As such, Minto Explorations Ltd. will:

1. Provide the expertise and resources required throughout the recovery process.
2. Provide clear and current information to ensure all documentation is completed appropriately and in the proper sequence.
3. Recognize the roles and responsibilities of managers, supervisors, human resources and safety department personnel ensuring an organized facilitation of the return to work.

4. Measure program performance and make improvements as warranted.
5. Operate in accordance with recognized industry standards, while complying with all applicable regulations.

### **Procedure**

Provide a safe and efficient means of reentry into the workplace following an employee absence due to illness or injury resulting in the worker being unable to resume full duties. The objective of this procedure is to provide a return to work plan that will safely transition an employee back into the workplace recognizing abilities, restrictions and any associated limitations and resulting in a return to full regular duties in an efficient and safe timeline. The return to work plan must entail meaningful and productive work, defined by both the employer and employee, while maintaining good business sense. The timeline for recovery along with assessment and consultation specific to each case will determine the availability of accommodation possibilities. In the event of undue hardship or health and safety concerns, accommodation will not be possible.

### **Scope**

This procedure pertains to employees that are unable to return to full duty work due to an illness or injury. Safety, human resources and department leaders will work collectively in the facilitation of the employees return.

### **Procedure**

- Safety will maintain regular communications with ill/injured worker during their absence from employment. Once it is determined that a return to work is possible, the worker will be required to get a functional abilities assessment by a physician. If worker is released to full duties he needs to report to the first aid attendant for a follow up assessment and provide the paperwork prior to starting work. If there are any restrictions required for the return to work, this procedure will apply.
- Safety and human resources will work together in conjunction with the worker, YWCHSB claim administrator and any medical professionals involved to gather as much information pertaining to the abilities, limitations and restrictions that the employee may have upon return to work at the mine site. YWCHSB functional abilities form is the required document provided for the physician to communicate restrictions. A generic Minto version is available for cases not related to YWCHSB.
- Once all pertinent information has been gathered and a return to work date decided and confirmed by YWCHSB or medical professional, department superintendent will meet with Human Resources and Safety Superintendent to develop a return to work plan within the worker's original department. This plan will address tasks, time, reporting concerns, and reassessment requirements. (supervisor, worker, first aid, physician) Compliance with all applicable regulations, company policies and safe work practices must be maintained within the

plan. The plan must involve meaningful and productive work, make good business sense and be communicated to the worker for approval.

- If the accommodation is not possible within the worker's original department, the General Manger will canvass other areas of the mine site for positions that could accommodate a plan of return.
- In the event that the worker cannot be accommodated, communication in this regard needs to be documented and forwarded to the worker and YWCHSB representative (if applicable). Options for short term disability (STD) coverage or lost time benefits must be discussed with the worker. Human resources are the primary contact for STD coverage as Safety department is primary contact for YWCHSB claims information.
- Once a plan has been developed, a written copy must be provided to worker and YWCHSB representatives (if applicable) prior to worker return. Department supervision, human resources and First aid/Safety Coordinator will be provided copies once signed by all parties and the original will be kept in the Safety Office.
- Worker must report to First Aid upon initial return to provide any documentation from physicians or YWCHSB. Worker will review and sign return to work plan and further follow up will be arranged.
- Documentation is critical. Supervisor must maintain record of all conversations and checks regarding the workers response during the reentry process. First Aid/Safety Coordinator will maintain all follow up first aid assessment documentation.
- Reassessment by First Aid/Safety Coordinator upon completion of return to work plan is critical and information will be forwarded to worker and WCB representatives by Safety Superintendent. Copy will be maintained on file.
- It is the workers responsibility to notify supervisor immediately of any concerns regarding his/her condition or with the work assigned during the reentry period.
- Subsequent evaluations by medical professionals will be completed specific to the case and progress of healing process. Functional abilities reports supplied from the reassessments will be evaluated to dictate future modifications to the RTW plan. The goal is to return the worker to full duties as soon as safely possible.

# 16.0 EMERGENCY CONTACT INFORMATION



Minto Explorations Ltd.  
MINTO MINE – MLU PERMIT #LQ00004

## EMERGENCY CONTACT INFORMATION

LEGAL DESCRIPTION: N 62.37.210 E 137.14.042

NAD 83 EASTING 385371 NORTHING 6945190

### LOCATION

### DIRECTIONS

FROM WHITEHORSE, HEAD WEST ON ALASKA HIGHWAY, TURN NORTH (RIGHT) ONTO HIGHWAY #2, TRAVEL TO APPROXIMATELY KILOMETRE 430, and TURN WEST (LEFT) ONTO ROAD MARKED BY MINTO MINE SIGN. WAIT FOR RIVER BARGE ENTER ON MINE ROAD AT KM27. BARGE OR BRIDGE CREW WILL PROVIDE ROAD RADIO PROTOCOLS AND FURTHER INSTRUCTIONS.

### FREQUENCIES

RADIO FREQUENCY	CHANNEL	RECEIVE	TRANSMIT
Access Road	16	162.075	167.055
Emergency	1	162.03	167.01

Amb Sat Phone 011-881-651-434-147 Control Room Sat Phone – 011-881-641-436-239 Spare Sat Phone – 011-881-622-452-217

**ALL EMERGENCIES ANNOUNCE 'CODE 1, CODE 1, CODE 1' ON CHANNEL 1**

### MEDICAL

DEPARTMENT	PERSONNEL	COMPANY	PHONE #	EXT.	E-MAIL	RADIO
Dispatch	Control Room	Minto Ex.	604-759-0860	458		7
Safety /Medical	Arjen Spruit	Minto Ex.	604-759-0860	444	arjens@mintomine.com	1
Safety/Medical	David Crottey	Minto Ex.	604-759-0860	444	davidc@mintomine.com	1

### OFF-SITE MEDICAL CONTACTS

AGENCY	PHONE NUMBER	ALTERNATE PHONE #
Nursing Station - Pelly Crossing	867-537-4444	24 hrs/day
Nursing Station - Carmacks	867-863-4444	After hours call forwarding
Whitehorse General Hospital	867-393-8700	24hrs/day
Yukon Communicable Disease Control	867-667-8178	
Poison Control Centre	867-393-8700	CANUTEC – 613-992-4624 (collect)

### EVACUATION / RESCUE

Yukon EMS Dispatch – <b>All medical transfers here</b>	867-667-3333	24hrs/day
Air North	867-456-8300	867-335-1210 24hrs/day
Trans North Helicopter	867-668-2177	
Alkan Air	867-668-2107	24hrs/day
Yukon Alaska Tours – Coach Transportation	867-668-5944	24hrs/day
Search and Rescue (RCMP)	867-537-5555	867-667-5555
RCMP - Pelly Crossing	867-537-5555	867-667-5555
RCMP - Carmacks	867-863-5555	867-667-5555

### MINE

DEPARTMENT	PERSONNEL	COMPANY	PHONE #	EXT.	E-MAIL	RADIO
General Manager	John Knapp	Minto Ex.	604-759-0860	439	johnk@mintomine.com	
Health and Safety	Mark Goebel	Minto Ex.	604-759-0860	444	markg@mintomine.com	1
Mine Manager	Jason Nickel	Minto Ex.	604-759-0860	453	jasonn@mintomine.com	
Mill Manager	Ted Kenney	Minto Ex.	604-759-0860	477	tedk@mintomine.com	
Environmental	Colleen Roche	Minto Ex.	604-759-0860	462	colleen@mintomine.com	
Mill General Forman	Barrett/Johnston	Minto Ex.	604-759-0860	454	daveb@mintomine.com	7
Maintenance/Project	Martin Mann	Minto Ex.	604-759-0860	457	martinm@mintomine.com	
Site Services	Steven Maunder	Minto Ex.	604-759-0860	224	stephenm@mintomone.com	16/5
Human Resources	Julie Gray	Minto Ex.	604-759-0860	441	julieg@mintomine.com	
Explorations Group	Brian Willet	Minto Ex.	604-759-0860	228	brianw@mintomine.com	
Pelly Superintendent	Clint Abel	Pelly Const.	604-759-0860	466	clinton@pelly.net	14
Pelly Superintendent	John Garvice	Pelly Const.	778-785-3184		john@pelly.net	14
Sodexo Manager	Ashley Fortney	Sodexo	604-759-0860	230	Minto.Noram@sodexo.com	
Dyno Supervisor	Dale Wearmouth	Dyno Nobel	403-775-6143		dnna.minto@am.dynonobel.com	14
Dyno Supervisor	Rene Mercereau	Dyno Nobel	403-775-6143		dnna.minto@am.dynonobel.com	14
Assay Lab Manager	Bella Ocampo	SGS	604-759-0860	447	bella.ocampo@sgs.com	
Assay Lab Manager	Sandra Dewar	SGS	604-759-0860	447	sandra.dewar@sgs.com	
Satellite Phones	Ambulance – 011-881-651-434-147 Control Room – 011-881-641-436-239 Spare – 011-881-622-452-217					

### OTHER

Superior Propane	867-334-1627	
Yukon Energy	1-800-676-2843	24hrs
Yukon Spill Response Line	867-667-7244	
YTG Disaster and Emergency	867-667-5220	
Yukon WCB	800-661-0443	
Forest Fire Reporting	888-798-3473	Carmacks Duty Officer – 867-332-1989
Conservation Officer	867-996-2202	867-335-2327 cell
Coroner	867-667-5310	
WCB Mines Inspector	867-667-8739	867-334-2002 cell or 867-667-5450 24hr