

Yukon Mining and Exploration Projects 2018

MINING AND EXPLORATION PROJECTS

Commodity

- silver
- gold
- copper
- jade
- nickel +/- PGE
- lead/zinc
- tungsten
- cobalt
- unknown

Drilling program

- indicates drilling program

Exploration projects - deposit type

- △ mafic/ultramafic associated
- mississippi valley type
- porphyry/sheeted vein
- ◇ skarn/replacement
- ◇ sediment associated
- ◇ vein/breccia
- ▽ volcanic associated
- ☆ unknown

Expenditures

- projects with >\$500,000 in expenditures are large symbols
- projects with <\$500,000 in expenditures are small symbols

Mining projects - development phase

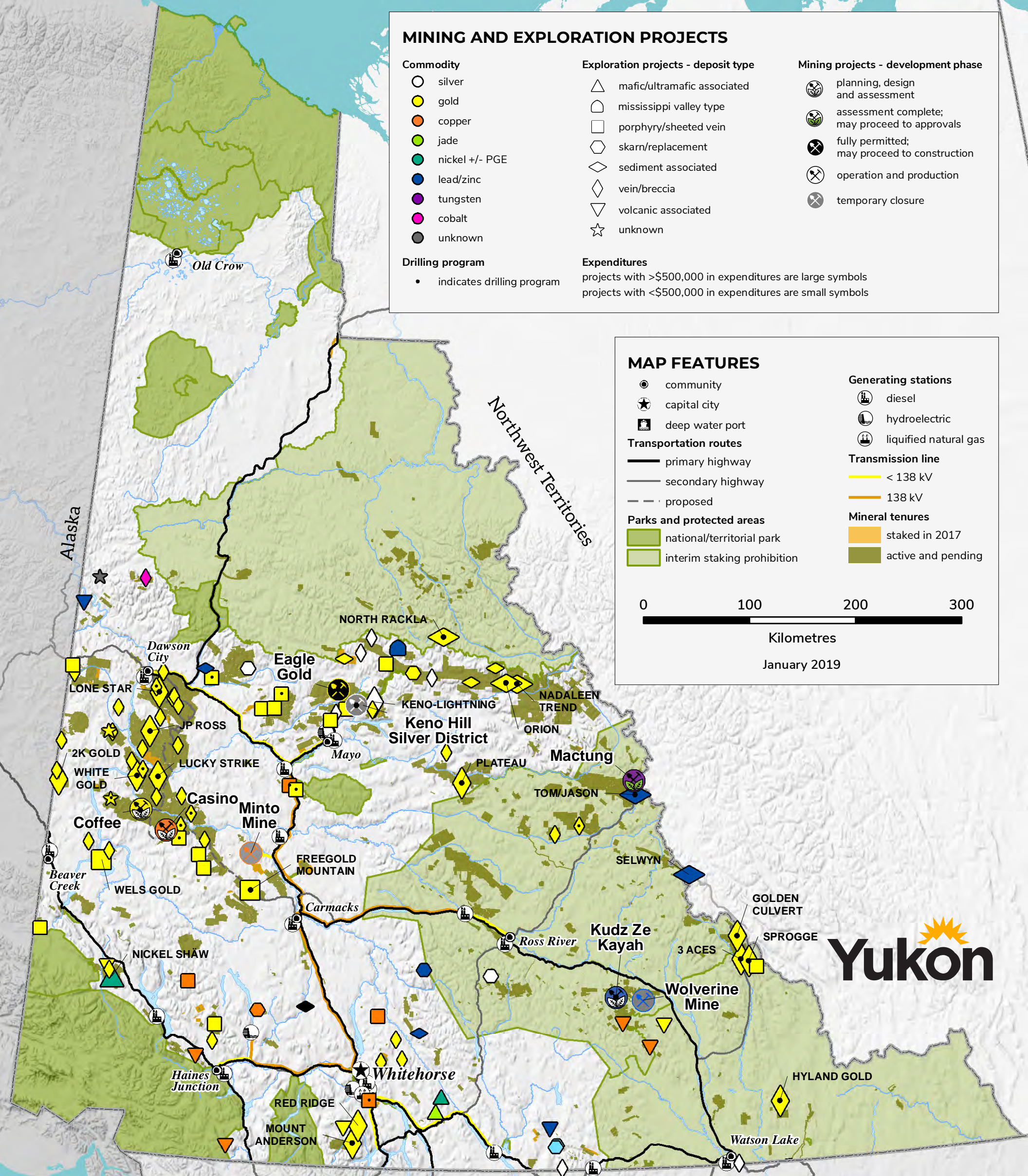
- ⊗ planning, design and assessment
- ⊗ assessment complete; may proceed to approvals
- ⊗ fully permitted; may proceed to construction
- ⊗ operation and production
- ⊗ temporary closure

MAP FEATURES

- community
- ★ capital city
- ⚓ deep water port
- primary highway
- secondary highway
- - - proposed
- parks and protected areas
 - national/territorial park
 - interim staking prohibition
- ⚡ generating stations
 - ⚡ diesel
 - ⚡ hydroelectric
 - ⚡ liquified natural gas
- transmission line
 - < 138 kV
 - 138 kV
- mineral tenures
 - staked in 2017
 - active and pending



January 2019



The exploration activity data represented on this map were compiled by Yukon Geological Survey.

Please contact mining@gov.yk.ca for further information.