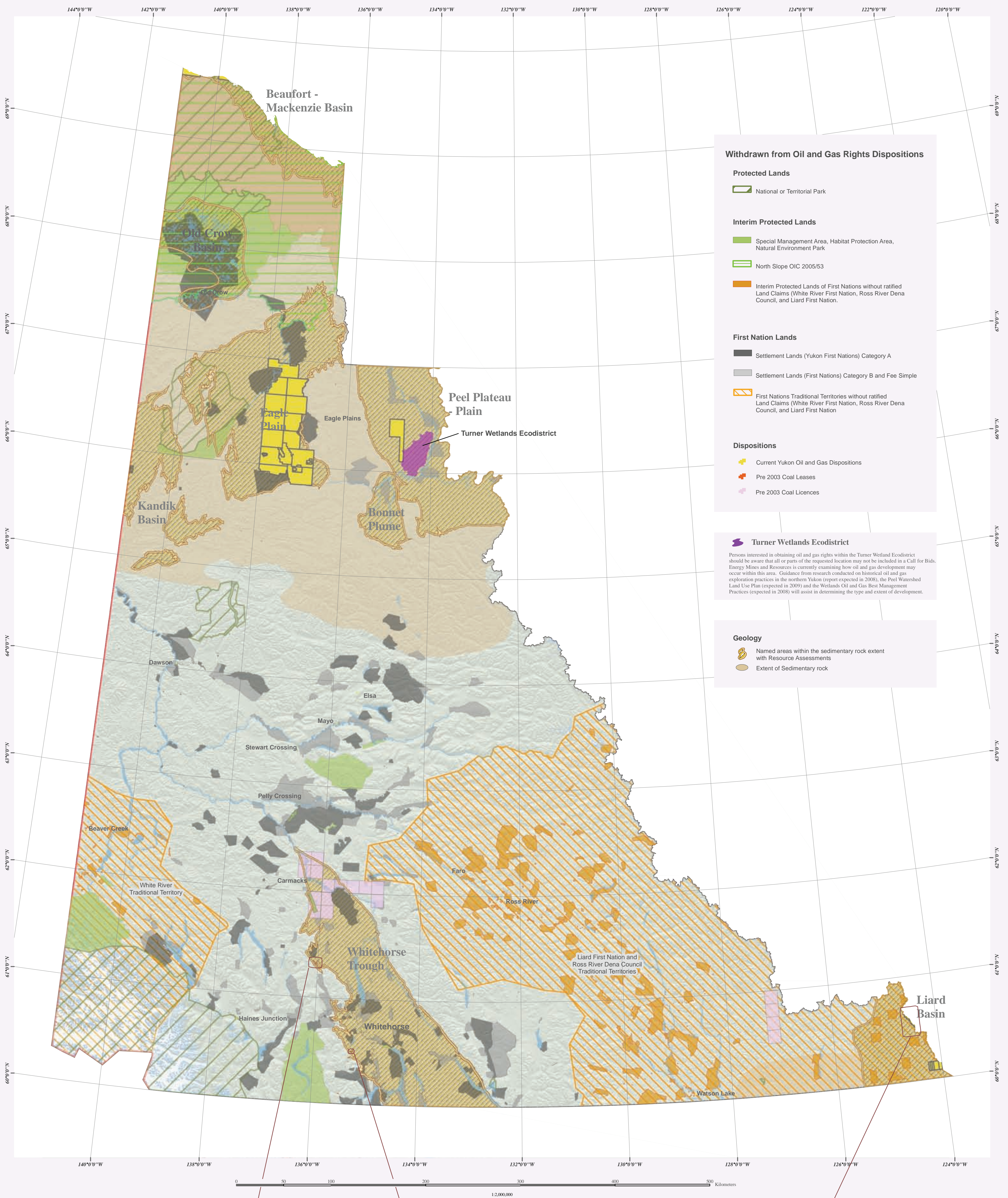


Yukon Land Status with Oil and Gas Interests



Withdrawn from Oil and Gas Rights Dispositions

Protected Lands

- National or Territorial Park

Interim Protected Lands

- Special Management Area, Habitat Protection Area, Natural Environment Park
- North Slope OIC 2005/53
- Interim Protected Lands of First Nations without ratified Land Claims (White River First Nation, Ross River Dena Council, and Liard First Nation)

First Nation Lands

- Settlement Lands (Yukon First Nations) Category A
- Settlement Lands (First Nations) Category B and Fee Simple
- First Nations Traditional Territories without ratified Land Claims (White River First Nation, Ross River Dena Council, and Liard First Nation)

Dispositions

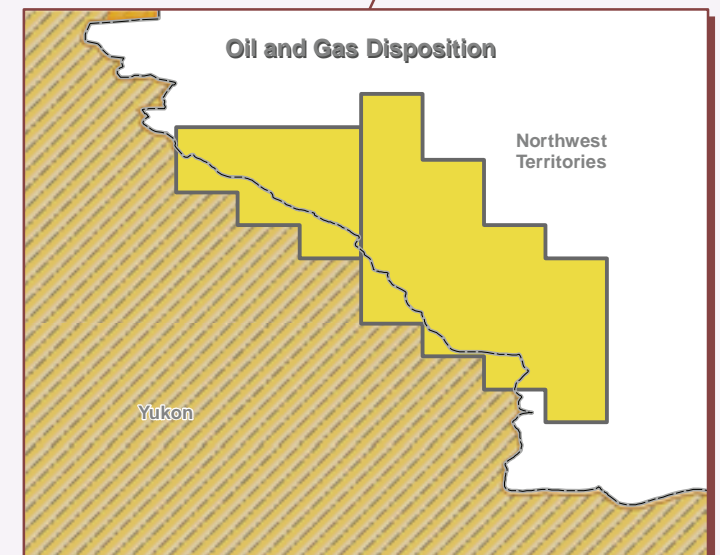
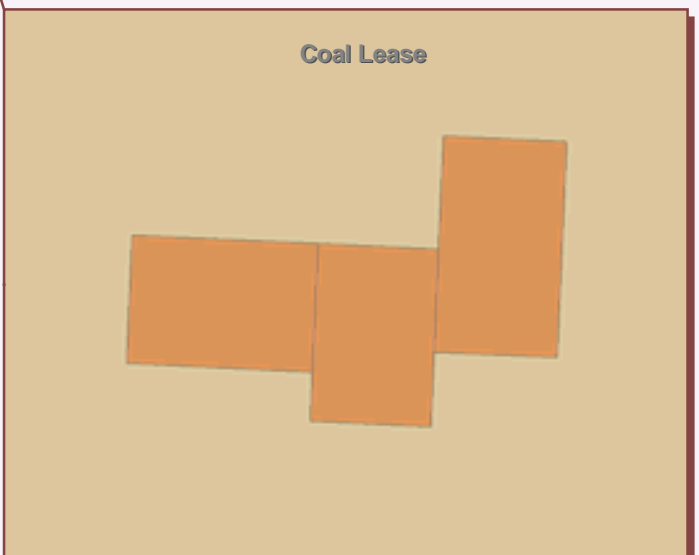
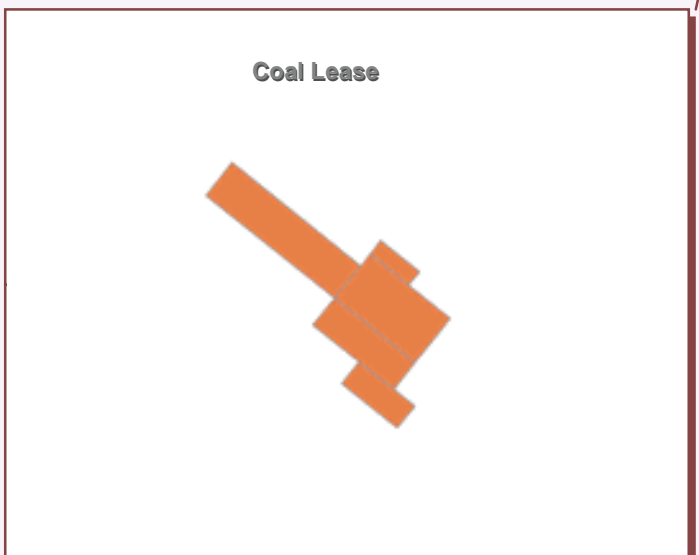
- Current Yukon Oil and Gas Dispositions
- Pre 2003 Coal Leases
- Pre 2003 Coal Licences

Turner Wetlands Ecodistrict

Persons interested in obtaining oil and gas rights within the Turner Wetland Ecodistrict should be aware that all or parts of the requested location may not be included in a Call for Bids. Energy Mines and Resources is currently examining how oil and gas development may occur within this area. Guidance from research conducted on historical oil and gas exploration practices in the northern Yukon (report expected in 2008), the Peel Watershed Land Use Plan (expected in 2009) and the Wetlands Oil and Gas Best Management Practices (expected in 2008) will assist in determining the type and extent of development.

Geology

- Named areas within the sedimentary rock extent with Resource Assessments
- Extent of Sedimentary rock



This map identifies those Yukon lands which may be subject to terms and conditions of use and access other than those set out in federal or Yukon laws. The terms and conditions of use that apply to those lands vary and are set out in their relevant legislation.

This map reflects our best understanding of the current status of the various Yukon lands portrayed. Every effort has been made to ensure accurate representation of the type, size, and location of designation. However, it does not constitute a legal opinion. For clarification, readers should consult with the various agencies responsible for the administration of those lands.

The land depicted is a generalized graphical representation of areas that are appropriate to be displayed at a 1:2,000,000 scale; smaller areas are not shown. The accuracy of the digital information is adequate for the representation at this scale but the data should not be used at a more detailed scale. The data are not to be used for statistical analysis, nor should they be used to resolve boundary issues.

This document was developed in consultation with Indian and Northern Affairs Canada (INAC), Land Claims Secretariat (YTG), Habitat Protection (YTG), Mining Recorder Offices (YTG), and Oil and Gas Management Branch (YTG)

Contact Information:
 Bruce McLean - Habitat Protection, Environment, YTG
 Greg Kent - Land Claims Secretariat, Executive Council Office, YTG
 Michael Draper - Lands Branch, Energy, Mines and Resources, YTG
 Glenn Southwick - Mineral Resources, Energy, Mines and Resources, YTG
 Debra Wortley - Oil and Gas Management Branch, YTG

Cartographic Representation

- Yukon First Nation Final Agreements for settlement lands and SMAs
- Governance, DIAND: settlement lands, interim protected lands, special management areas
- Natural Resources Canada (NRCAN): infrastructure and topographical data, national and territorial parks, habitat protection areas, special management areas, surveyed settlement lands
- Department of Environment (YTG): 90 m DEM and shaded relief
- Yukon Oil and Gas Management Branch - Oil and Gas Dispositions
- Yukon Geological Survey - Geology

Yukon Albers Equal Area Projection

False Easting: 500000.000000
 False Northing: 500000.000000
 Central Meridian: -132.500000
 Standard Parallel 1: 68.000000
 Standard Parallel 2: 61.666667
 Latitude Of Origin: 59.000000
 Linear Unit: Meter (1.000000)

North American Datum 1983 (NAD83)

