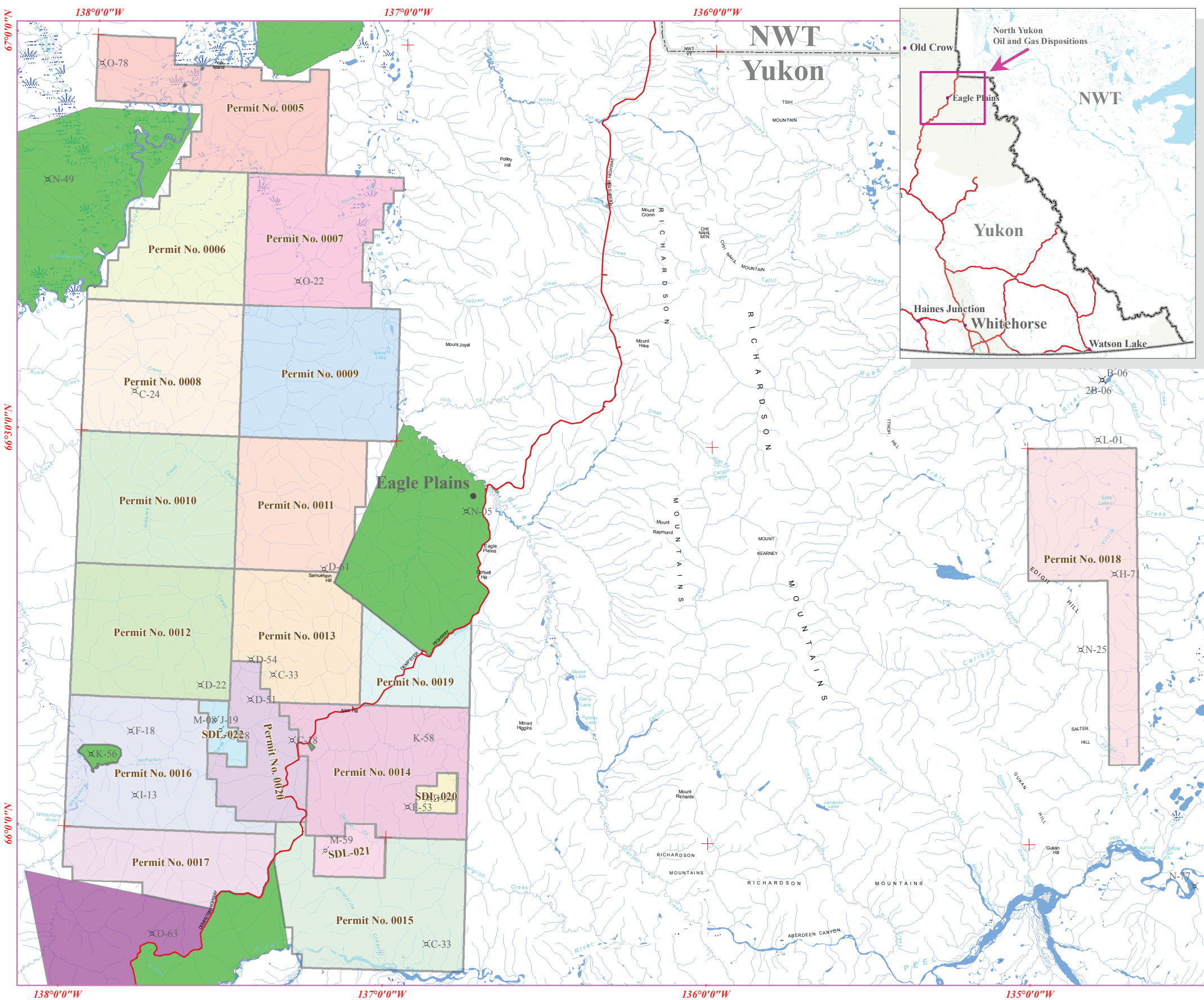


Oil and Gas Resources North Yukon Dispositions



Permit 0005 39638.3 hectares All or portions of: 66-0-137-45 6 to 10 16 to 20 26 to 30 36 to 40 46 to 50 56 to 60 66 to 70 76 to 80 67-0-137-30 1 to 8 11 to 18 21 to 28 31 to 38 41 to 48 51 to 53 56 to 58 61 66 to 68 76 to 78 67-0-137-15 1 to 8 11 to 18 21 to 27 31 to 37 41 to 47 51 to 57 61 to 67 71 to 78	Permit 0006 30211.7 hectares All or portions of: 66-50-137-30 1 to 80 66-50-137-45 1 to 8 11 to 17 21 to 27 31 to 37 41 to 44 51 to 53 61, and 71	Permit 0007 34291.5 hectares All or portions of: 66-50-137-15 1 to 80 66-50-137-0 10, 19, 20 27 to 32 36 to 80	Permit 0008 41228.6 hectares All or portions of: 66-40-137-30 1 to 80 66-40-137-45 1 to 80	Permit 0009 41226.7 hectares All or portions of: 66-40-137-0 1 to 80 66-40-137-15 1 to 80
Permit 0010 41504.1 hectares All or portions of: 66-30-137-45 1 to 80 66-30-137-30 1 to 80 67-0-137-15 1 to 8 11 to 18 21 to 27 31 to 37 41 to 47 51 to 57 61 to 67 71 to 78	Permit 0011 31880.7 hectares All or portions of: 66-30-137-15 1 to 80 66-30-137-0 36 to 40 41, 43 44 to 50 51, 80	Permit 0012 41779.2 hectares All or portions of: 66-20-137-45 1 to 80 66-20-137-30 1, 10, 11 20, 21, 80	Permit 0013 30164.6 hectares All or portions of: 66-20-137-0 31 to 38 41 to 49 51 to 59 60, 80 66-20-137-15 1 to 40 42 to 50 54 to 60 64 to 70 74 to 80	
Permit 0014 40323.6 hectares All or portions of: 66-10-137-0 1, 2, 10 12, 20, 22 30, 32, 40 41, 50, 51 60, 61, 76 77, 78, 80 66-10-137-15 7, 10, 19 20, 30 66-10-136-45 1, 2, 3, 6 7 to 12 16, 22 26 to 32 35 to 42 45 to 80	Permit 0015 42770.4 hectares All or portions of: 66-0-136-45 1 to 80 66-10-137-15 1, 11, 1 66-0-137-0 1 to 7 11 to 17 21 to 27 31 to 37 41 to 47 51 to 57 61 to 67 71 to 80 66-0-137-15 14 to 20 25 to 28 29, 30	Permit 0016 38193.3 hectares All or portions of: 66-0-137-45 1 to 24 25, 27 28 to 34 35, 37 to 44 47 to 50 45, 47 57 to 60 48 to 65 67, 68, 80 66-10-137-30 1, 2 11 to 14 21 to 29 31 to 80 66-10-137-15 31, 41, 51 61, 71, 72 66-0-137-15 2 to 10 14 to 20 25 to 28 29, 30	Permit 0017 25054.9 hectares All or portions of: 66-0-137-45 7 to 10 17 to 20 27 to 30 37 to 40 47 to 50 57 to 60 67 to 70 78 to 80 66-0-137-15 36 to 40 46 to 50 56 to 60 66 to 70 76 to 80 66-0-137-30 5 to 10 15 to 20 25 to 30 35 to 40 45 to 50 55 to 60 65 to 70 75 to 80	Permit 0018 39509.9 hectares All or portions of: 66-30-134-30 51 to 80 66-10-134-30 57 to 60 67 to 70 77 to 80 66-20-134-30 51 to 80 66-30-134-45 1 to 80
Permit 0019 16153.0 hectares All or portions of: 66-20-137-0 1 to 7 11 to 18 21 to 28 66-20-136-45 1 to 7 11 to 17 21 to 26 31 to 35 41 to 45 51 to 55 61 to 66 71 to 76	Permit 0020 19773.2 hectares All or portions of: 66-20-137-15 41 51 to 53 61 to 63 71 to 73 66-10-137-30 3 to 6 8 to 10 15, 16 66-10-137-15 2 to 6 12 to 18 22 to 29 32 to 40 42 to 50 52 to 60 62 to 70 73 to 75 77 to 80	SDL 020 2631.2 hectares All or portions of: 66-10-136-45 12 to 15 22 to 25 32 to 35 42 to 44 52 to 54	SDL 021 6332.9 hectares All or portions of: 66-0-137-0 7 to 10 17 to 20 27 to 30 37 to 40 47 to 50 57 to 60 67 to 70 77 to 80 66-10-137-0 11, 21, 31, 41	SDL 022 3672.3 hectares All or portions of: 66-10-137-30 5 to 10 16 to 20 26 to 30 39, 40 66-10-137-15 65 to 67 75 to 78

- Tr'ondëk Hwëch'in
- Vuntut Gwitchin First Nation
- Abandoned
- Producing
- Disposal
- Suspended
- Flowing Gas

