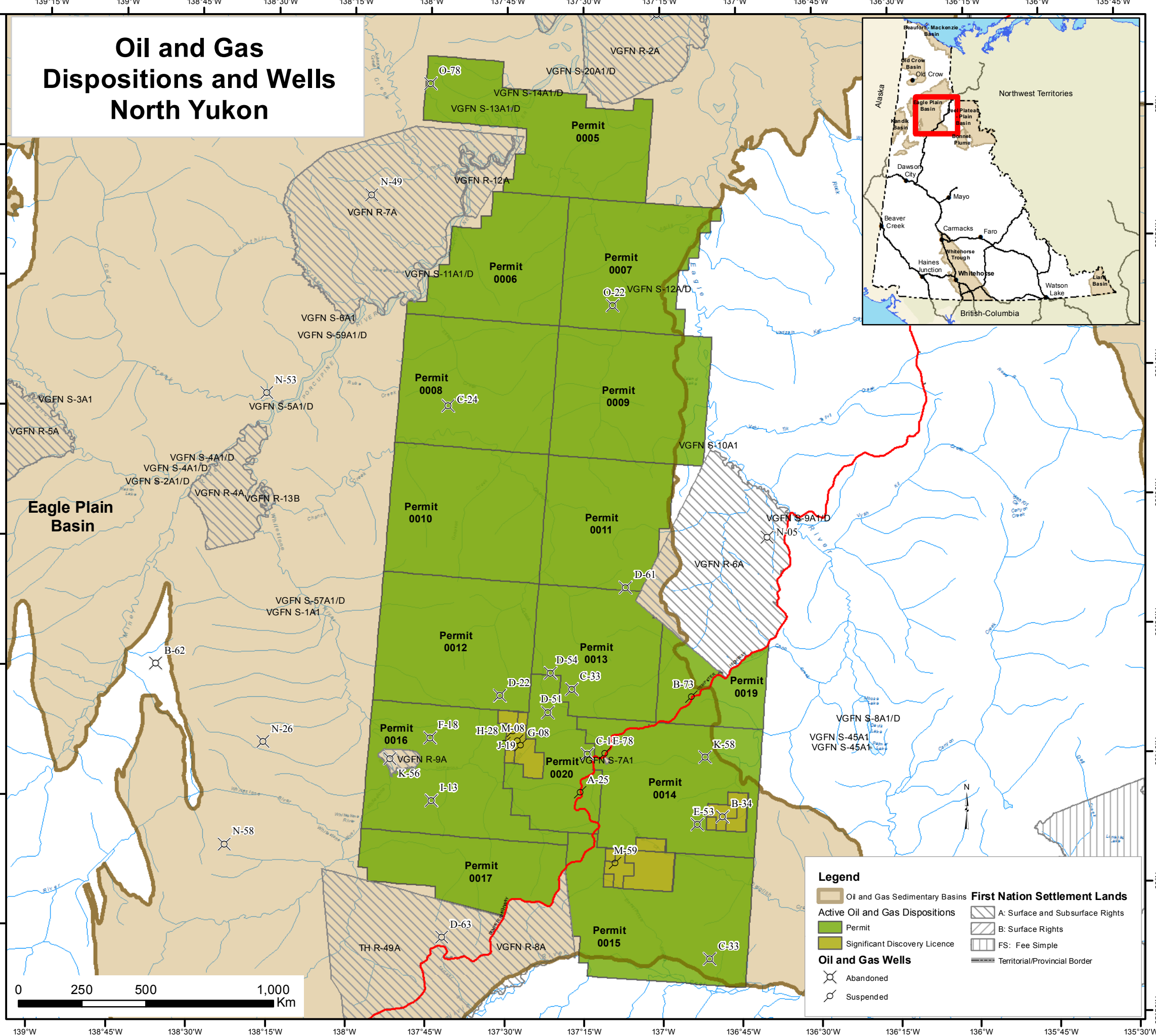


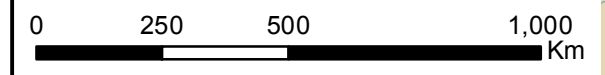
# Oil and Gas Dispositions and Wells North Yukon



Permit 005	Permit 006	Permit 007	Permit 008	Permit 009
38638.3 Ha	30211.7 Ha	34291.5 Ha	41228.6 Ha	41226.7 Ha
All or portions of:	All or portions of:	All or portions of:	All or portions of:	All or portions of:
67-00-137-45	66-50-137-30	66-50-137-15	66-40-137-30	66-40-137-00
6 to 10	1 to 80	1 to 80	1 to 80	1 to 80
16 to 20	66-50-137-45	66-50-137-00	66-40-137-45	66-40-137-15
26 to 30	1 to 8	1 to 8	1 to 80	1 to 80
36 to 40	11 to 17	27 to 32	36 to 80	
46 to 50	21 to 27			
56 to 60	31 to 37			
66 to 70	41 to 44			
76 to 80	51 to 53			
67-00-137-30	61, 71			
1 to 8				
11 to 18				
21 to 28				
31 to 38				
41 to 48				
51 to 53				
56 to 58				
61, 66 to 68	Permit 010	Permit 011	Permit 012	Permit 013
76 to 78	41504.1 Ha	31880.7 Ha	41779.2 Ha	30164.6 Ha
67-00-137-15	All or portions of:	All or portions of:	All or portions of:	All or portions of:
1 to 8	66-30-137-45	66-30-137-15	66-20-137-45	66-20-137-00
11 to 18	1 to 80	1 to 80	1 to 80	31 to 38
21 to 27	66-30-137-30	66-30-137-00	66-20-137-30	41 to 49
31 to 37	1 to 80	36 to 80	1 to 80	51 to 80
41 to 47				66-20-137-30
51 to 57				1 to 80
61 to 67				
71 to 78				
	Permit 014	Permit 015	Permit 016	Permit 017
	40323.6 Ha	42770.6 Ha	38193.3 Ha	25054.9 Ha
	All or portions of:	All or portions of:	All or portions of:	All or portions of:
	66-10-137-00	66-10-136-45	66-10-137-45	66-00-137-45
	1 to 10	1 to 80	1 to 45	7 to 10
	12 to 20	66-10-137-15	47 to 80	17 to 20
	22 to 30	1, 11, 21	66-10-137-30	27 to 30
	32 to 80	66-00-137-00	1, 2	37 to 40
	66-10-137-15	1 to 7	11 to 14	47 to 50
	7 to 10	11 to 17	21 to 29	57 to 60
	19, 20, 30	21 to 27	31 to 80	67 to 70
	66-10-136-45	31 to 37	66-10-137-15	78 to 80
	1 to 12	41 to 47	31, 41, 51	66-00-137-15
	16 to 22	51 to 57	61, 71, 72	36 to 40
	26 to 32	61 to 67		46 to 50
	35 to 42	71 to 80		56 to 60
	45 to 80	66-00-137-15		66 to 70
		2 to 10		76 to 80
		14 to 20		66-00-137-30
		25 to 28		5 to 10
		29, 30		15 to 20
				25 to 30
				35 to 40
				45 to 50
				55 to 60
				65 to 70
				75 to 80
Permit 019	Permit 020	SDL 020	SDL 021	SDL 022
16153.0 Ha	19773.2 Ha	2631.2 Ha	6333.0 Ha	3672.3 Ha
All or portions of:	All or portions of:	All or portions of:	All or portions of:	All or portions of:
66-20-137-00	66-20-137-15	66-10-136-45	66-00-137-00	66-10-137-30
1 to 7	41, 51 to 53	12 to 15	7 to 10	5 to 10
11 to 18	61 to 63	22 to 25	17 to 20	16 to 20
21 to 28	71 to 73	32 to 35	27 to 30	26 to 30
66-20-136-45	66-10-137-30	42 to 44	37 to 40	39, 40
1 to 7	3 to 6	52 to 54	47 to 50	66-10-137-15
11 to 17	8 to 10		57 to 60	65 to 67
21 to 26	15, 16		67 to 70	75 to 78
31 to 35	66-10-137-15		77 to 80	
41 to 45	2 to 6		66-10-137-00	
51 to 55	12 to 18		11, 21, 31, 41	
61 to 66	22 to 29			
71 to 76	32 to 40			
	42 to 50			
	52 to 60			
	62 to 70			
	73 to 75			
	77 to 80			

**Legend**

- Oil and Gas Sedimentary Basins
- Active Oil and Gas Dispositions
  - Permit
  - Significant Discovery Licence
- Oil and Gas Wells
  - Abandoned
  - Suspended
- First Nation Settlement Lands
  - A: Surface and Subsurface Rights
  - B: Surface Rights
  - FS: Fee Simple
- Territorial/Provincial Border



Map Sheet  
 Grid Area NAD83  
 Grid Section NAD83