

CALL FOR WORK BIDS SPRING 2007

LOCATION: 2007B016

A. Oil and Gas Basin: Eagle Plain

B. Location: 2007B016

Grid Area(s)	66-0-137-15	66-0-137-30	66-10-137-45			
Section(s)	36 to 40 46 to 50 56 to 60 66 to 70 76 to 80	5 to 10 15 to 20 25 to 30 35 to 40 45 to 50 55 to 60 65 to 70 75 to 80	7 to 10 17 to 20 27 to 30 37 to 40 47 to 50 57 to 60 67 to 70 78 to 80			

<p>Excluding: Settlement Land as described in the Vuntut Gwitchin First Nation Final Agreement: R-49A in portions of: 66-0-137-15 sections 36 to 39, 46, 56, 66, 76, and 66-0-137-30 sections 5, 6 and Settlement Land as described in the Tr'ondek Hwech'in First Nation Final Agreement: R-8A in portions of: 66-0-137-30 sections 15, 25, 35, 45, 55, 65, 75, and 76</p>	<p>Total sections: All or portions of 104 sections.</p> <p>Total area: 250.6 square kilometres, more or less.</p>
--	---

The map of Call for Work Bid Location 2007B016 is on the oil and gas website at http://www.emr.gov.yk.ca/oilandgas/rights_management_maps_and_data.html .

138°0'0"W

137°45'0"W

137°30'0"W

Spring 2007 Oil and Gas Call for Work Bids









Bid Location 2007B016
Eagle Plain
250.6 Square Kilometres

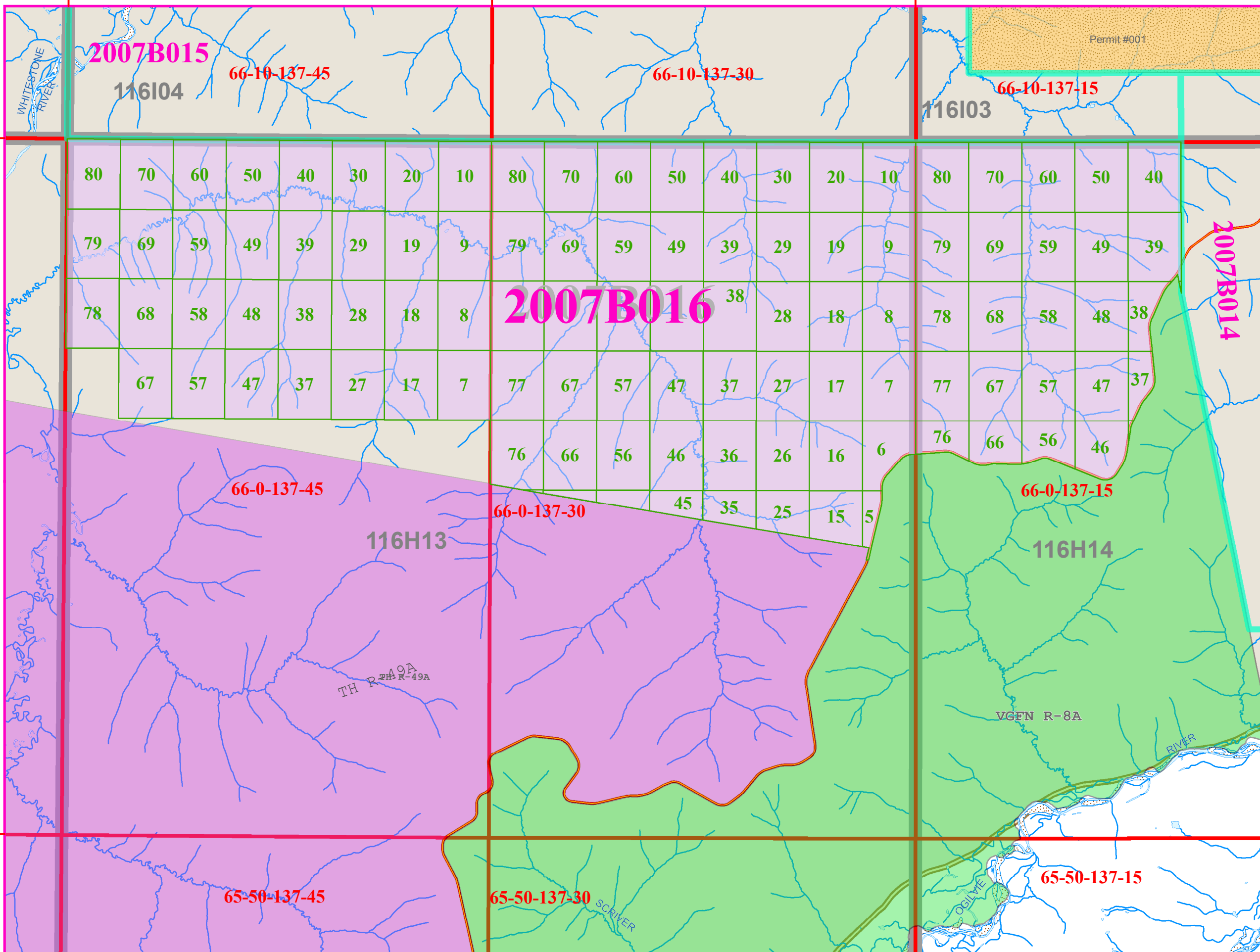
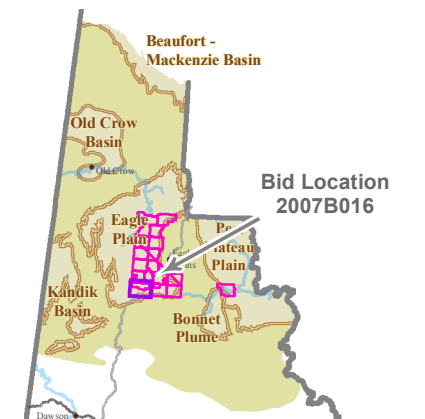
Land Description for 2007B016

66-0-137-15	66-0-137-30	66-0-137-45
36 to 40	5 to 10	7 to 10
46 to 50	15 to 20	17 to 20
56 to 60	25 to 30	27 to 30
66 to 70	35 to 40	37 to 40
76 to 80	45 to 50	47 to 50
	55 to 60	57 to 60
	65 to 70	67 to 70
EXCLUDING:	75 to 80	78 to 80

Settlement Land as described in the Vuntut Gwitchin First Nation Final Agreement: **R-49A** in portions of: 66-0-137-15 sections 36 to 39, 46, 56, 66, 76, and 66-0-137-30 sections 5, 6 and

Settlement Land as described in the Tr'ondek Hwech'n First Nation Final Agreement: **R-8A** in portions of: 66-0-137-30 sections 15, 25, 35, 45, 55, 65, 75, and 76

-  Tr'ondek Hwech'n
-  Vuntut Gwitchin First Nation
-  Adjacent Bid Locations
-  Resource Basin
-  Existing Disposition
-  Map Sheet
-  Grid Area NAD83
-  Grid Section NAD83



66°0'0"N

65°50'0"N