

106401

Date: July 7, 2017

PLAN OF SURVEY OF

LOTS 1131 TO 1147, QUAD 105 M/12 AND ROADS 1 TO 3

COMPRISING OF LOTS 1118 AND 1119 QUAD 105 M/12 PLAN 104679 CLSR, 2015-0067 LTO, AND YUKON LAND

LATITUDE 63°38', LONGITUDE 135°53' (Approx.)

YUKON

SCALE 1 : 3000



The plot size that will provide true scale and optimum readability for this plan is 610mm x 1240mm.

THIS SURVEY WAS EXECUTED DURING THE PERIOD OF OCTOBER 17, 2016 TO MAY 15, 2017, BY SYLVAIN LESSARD, C.L.S.

LEGEND :

Bearings are UTM Grid, derived from GPS observations at stations 'GCP1' and 'GCP2', and are referred to the central meridian of UTM Zone 8 (135° W.)

- GPS Stations shown thus
C.L.S. Standard Post found shown thus
Old Pattern Iron Post found shown thus
C.L.S. 77 Post found shown thus
C.L.S. 77 Post placed shown thus
Lands dealt with by this plan bounded thus
Traverse lines are shown thus
GPS denotes 'Global Positioning System'
RTK denotes 'Real Time Kinematic GPS'
UTRM denotes 'Unable to Read Marks'

Distances are horizontal at general ground level and are expressed in metres. To compute grid distances multiply ground distances by the average combined scale factor of 0.999536.

All monuments placed in the course of this survey are marked with their respective lot number, R for Road, and the year of the survey (2016).

All placed monuments are accompanied by a red wooden stake 0.05 x 0.05 x 0.60.

All boundaries have been cut and blazed unless located along roads.

Re: Section 38, CANADA LANDS SURVEYORS REGULATIONS CERTIFIED CORRECT ON THE 22 DAY OF June, 2017

Sylvain Lessard, Canada Lands Surveyor



OWNER: THE COMMISSIONER OF YUKON LOTS 1118 QUAD 105 M/12, Plan 104679 CLSR, 2015-0067 LTO (C. of T. 2016Y0747) LOTS 1119 QUAD 105 M/12, Plan 104679 CLSR, 2015-0067 LTO (C. of T. 2016Y0748)

Signature of Sylvain Lessard, dated July 4/17

Department of Natural Resources Re: Section 29, Canada Lands Surveys Act Confirmed insofar as Crown Canada Lands are affected. Robert Gray, Deputy Surveyor General, North

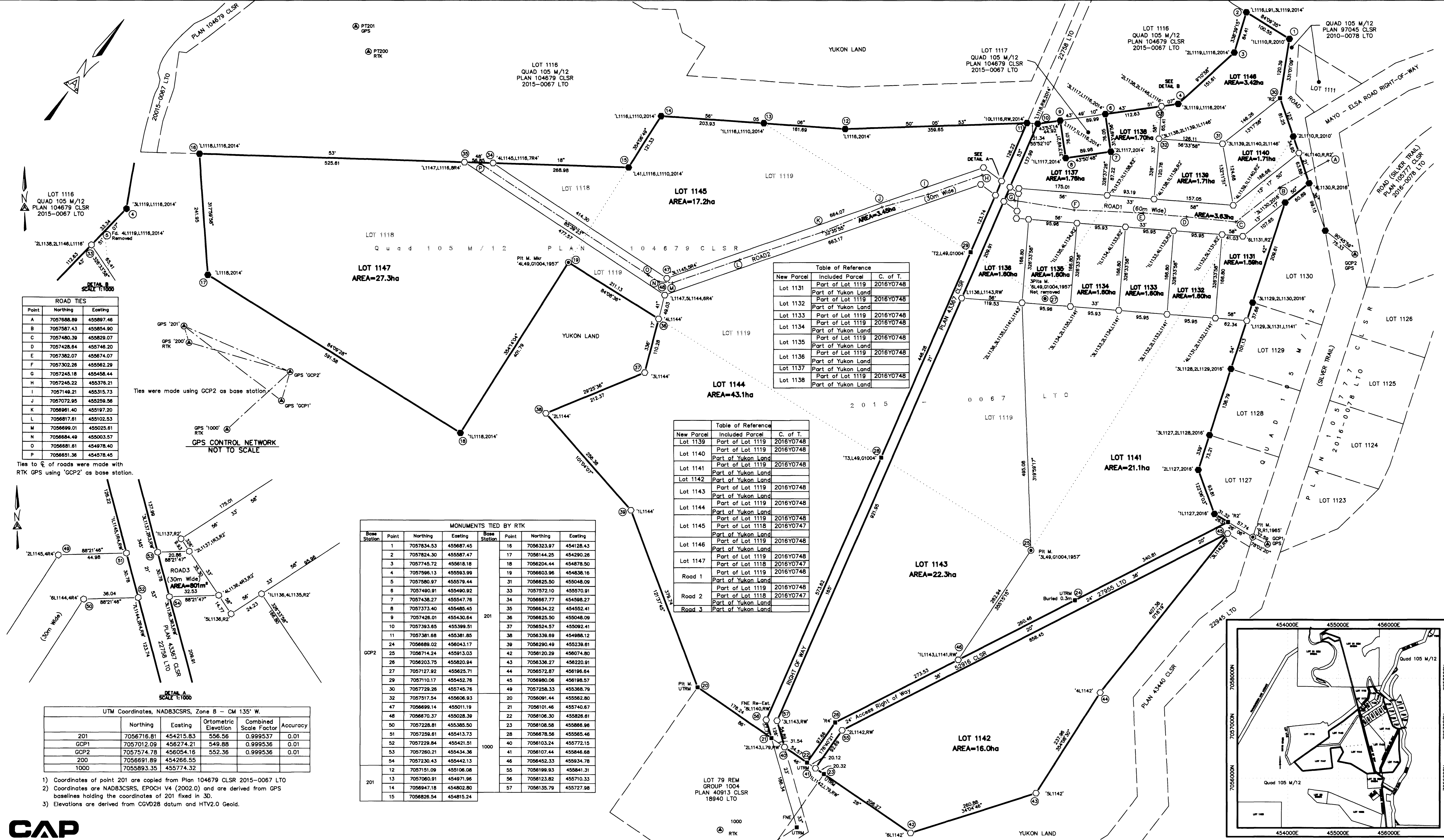


Table of Reference for Lots 1131-1138, listing included parcels and C. of T. numbers.

Table of Reference for Lots 1139-1146, listing included parcels and C. of T. numbers.

Table of MONUMENTS TIED BY RTK with columns for Base Station, Point, Northing, Easting, and UTM coordinates.

Table of ROAD TIES with columns for Point, Northing, and Easting.

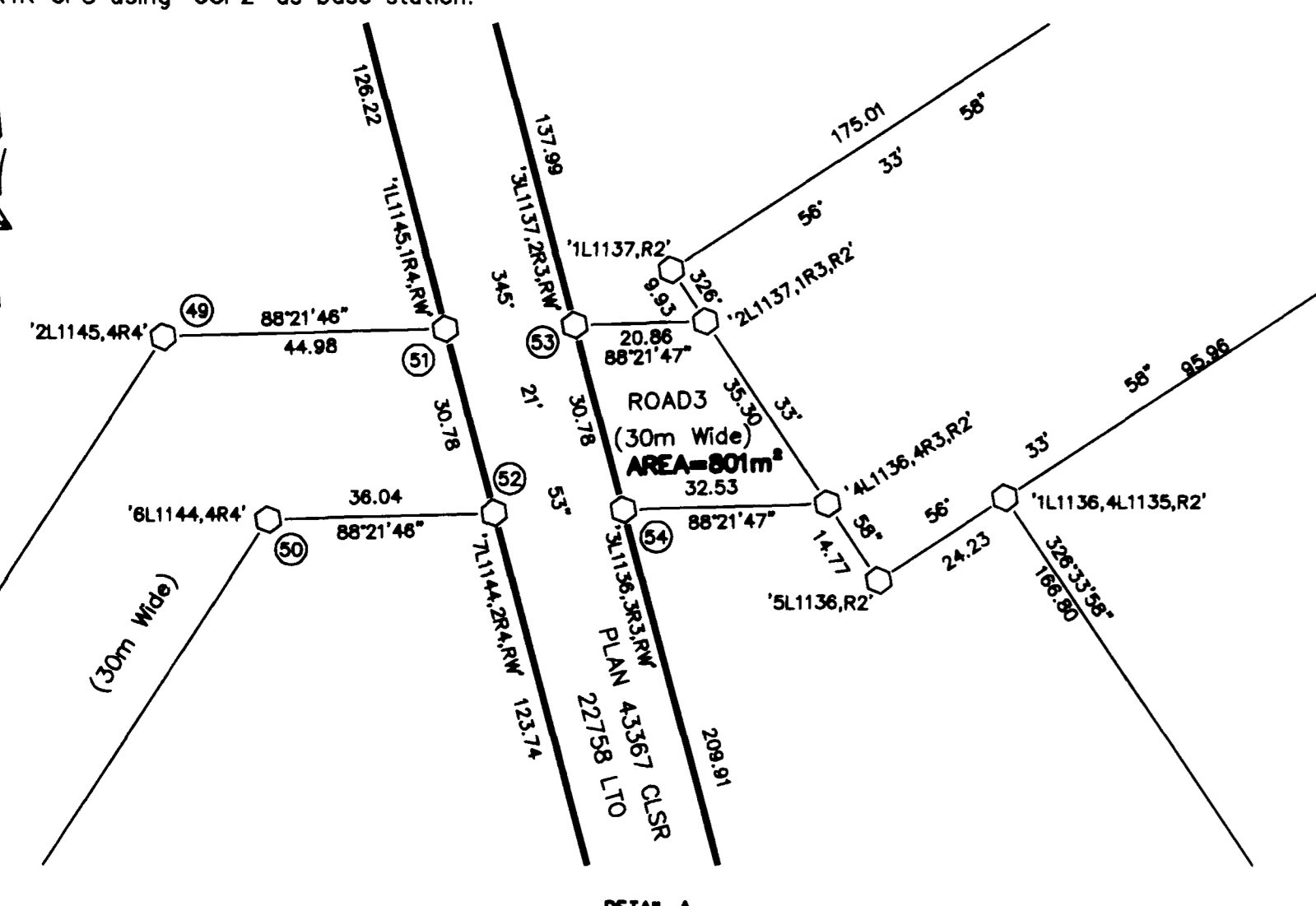


Table of UTM Coordinates, NAD83CSRS, Zone 8 - CM 135° W. for points 201, GCP1, GCP2, 200, and 1000.

- 1) Coordinates of point 201 are copied from Plan 104679 CLSR 2015-0067 LTO
2) Coordinates are NAD83CSRS, EPOCH V4 (2002.0) and are derived from GPS baselines holding the coordinates of 201 fixed in 3D.
3) Elevations are derived from CGVD28 datum and HTV2.0 Geoid.



FILE: ES00000.15