


PLAN AND FIELD NOTES OF SURVEY OF
LOTS 188 TO 190
 CARMACKS
 YUKON

Scale 1:250


THIS SURVEY WAS EXECUTED DURING THE PERIOD AUGUST 25 TO AUGUST 26, 2012 BY G.C. FRIESEN, CLS

LEGEND:

Bearings are UTM Grid, derived from the bearing 127°27'33" for the line between found monuments "24,R" and "L33,10,L38,R,1968" as shown on FN 96163 CLSR and are referred to the Central Meridian of UTM Zone 8 (135°W).


Distances shown are horizontal at general ground level and are expressed in metres.

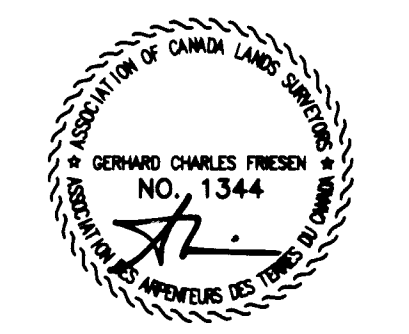
- CLS 77 Post placed shown thus ○
- CLS 77 Post found shown thus ●
- CLS Standard Post found shown thus ⊙
- Old Pattern Iron Post found shown thus ■
- Traverse lines and station shown thus - - - - -
- Lands dealt with by this plan bounded thus _____

All posts placed on this survey are marked with appropriate lot numbers, 'R' for road where applicable and '2012' for the year of the survey unless shown otherwise.

CERTIFIED CORRECT:

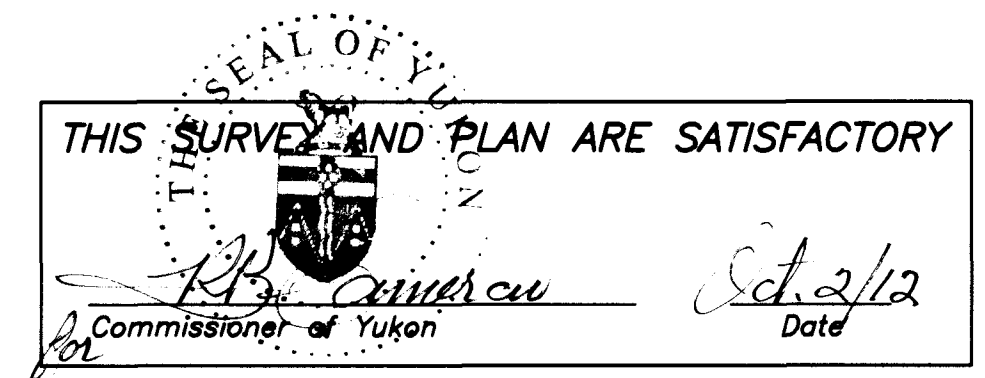
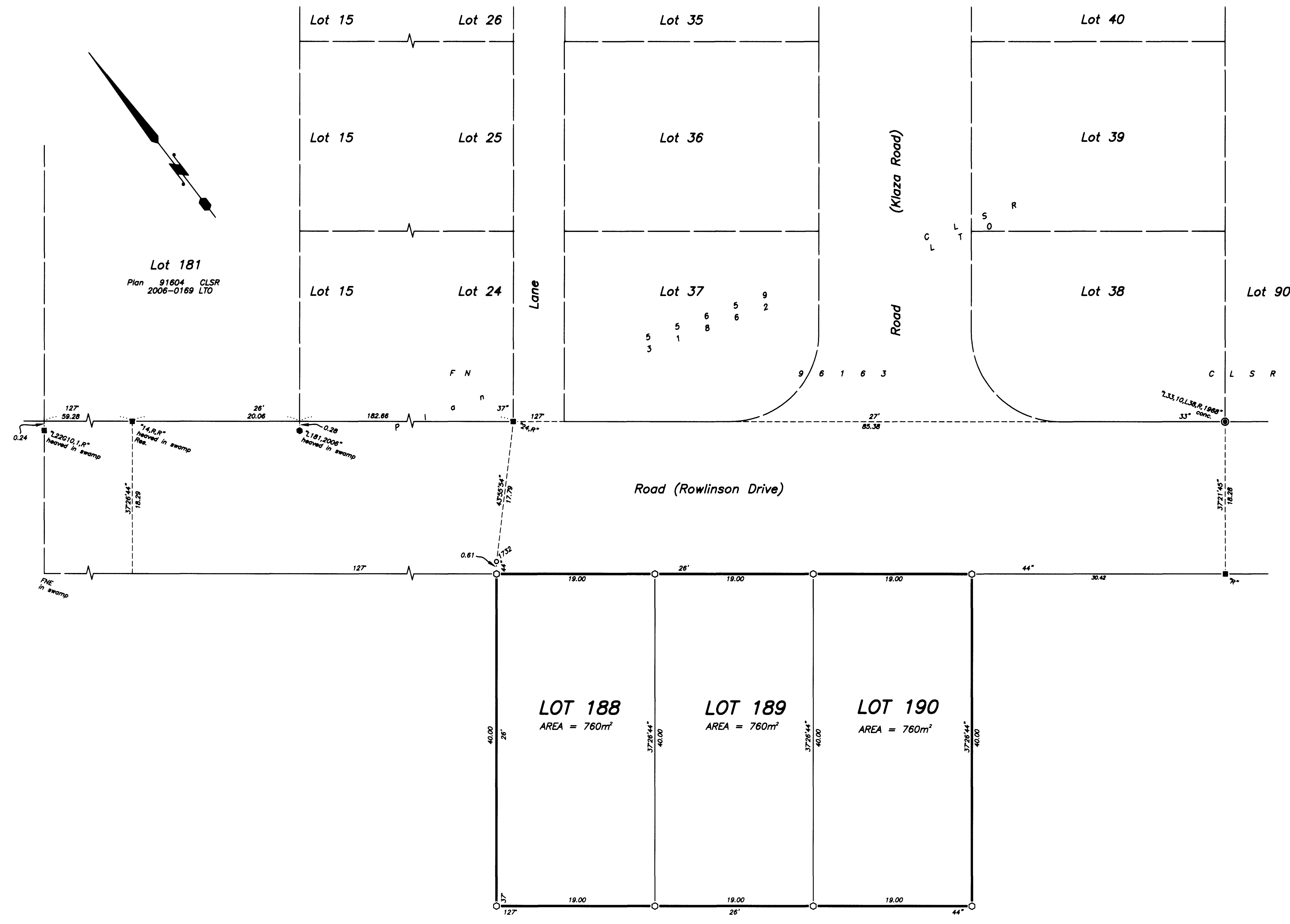
Sept 26/12
 Date


 G.C. Friesen, CLS



101031 C526

101031 C526



Department of Natural Resources
 Re: Section 29, Canada Lands Surveys Act
 CONFIRMED: October 3, 2012
 Brian Thompson, Head, Cadastral Services
 Yukon, Surveyor General Branch