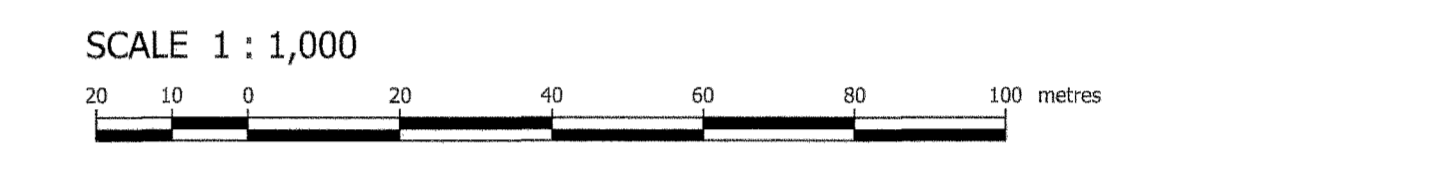


PLAN AND FIELD NOTES OF SURVEY OF  
**LOTS 1 to 22, BLOCK 43,  
 LOTS 1 to 5, BLOCK 44,  
 LOTS 1 to 8, BLOCK 45,  
 LOTS 1 to 7, BLOCK 46,  
 LOTS 1 to 17, BLOCK 47 and ROAD**

**HAINES JUNCTION  
 YUKON**



This survey was executed during the period of September 28, 2010 to October 7, 2011, by Joe C. Iles, CLS.

LEGEND:  
 Bearings are UTM Grid, derived from GPS observations, and are referred to the central meridian of UTM Zone 8, (135° West Longitude) NAD83-CSRS.

Distances are horizontal at general ground level and are expressed in metres.

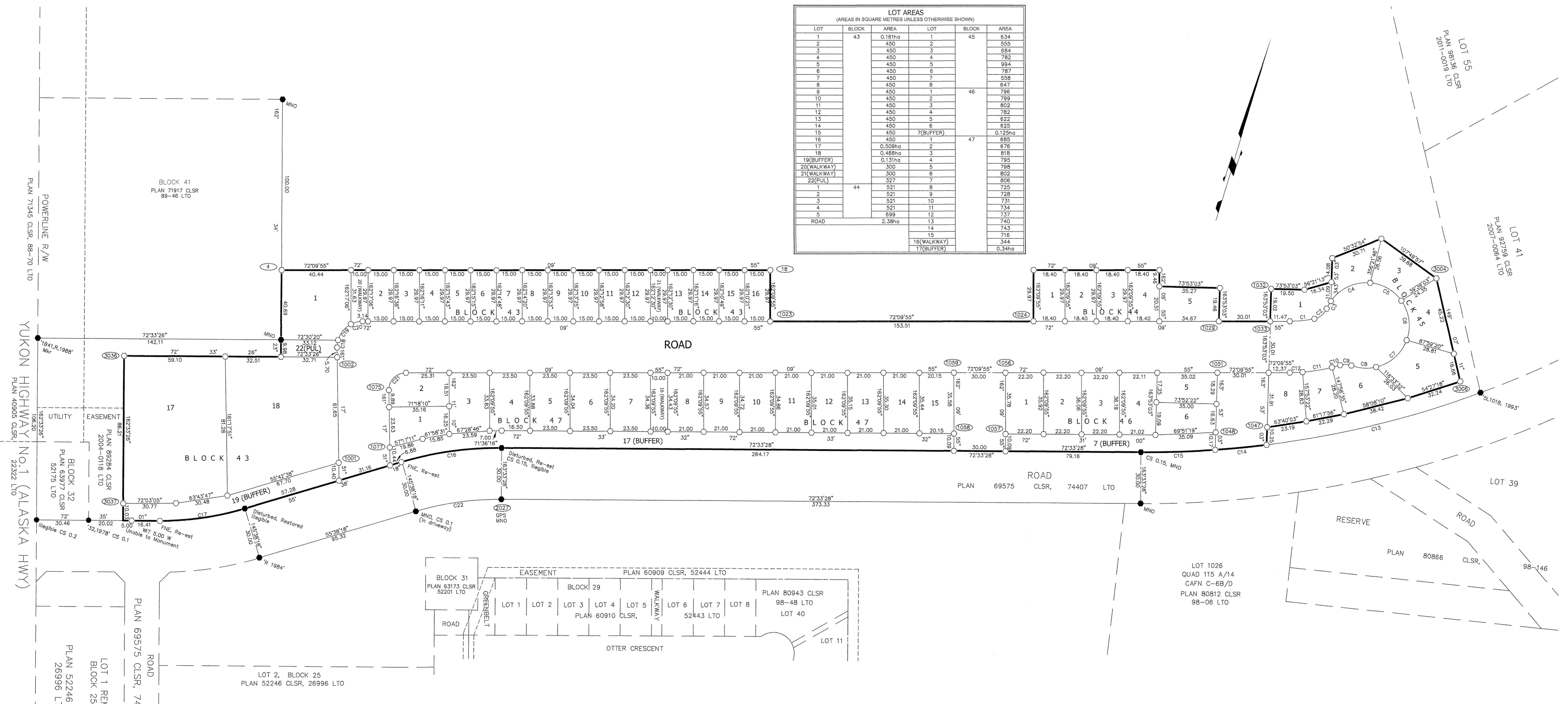
To compute UTM coordinates, distances have been converted to sea level and to the projection plane by applying a combined scale factor of 0.99983.

All post placed are marked with the appropriate Lot and Block numbers as well as R for Road, W for Walkway, PUL for Public Utility Lot, a unique number if required and the year of the survey.

- CLS 69 post found shown thus . . . . . ●
  - CLS 77 post found shown thus . . . . . ○
  - CLS 77 post placed shown thus . . . . . ○
  - Traverse lines shown thus . . . . . ———
  - Lands dealt with by this plan bounded thus . . . . . - - - - -
- CAFN denotes Champagne and Aishihik First Nations.  
 GPS denotes GPS Control Station.  
 MNO denotes marks not obtained.  
 PUL denotes Public Utility Lot.  
 CS denotes countersunk.

Certified Correct  
11/11/11  
 Date: \_\_\_\_\_  
 Joe C. Iles, CLS

| LOT AREAS<br>(AREAS IN SQUARE METRES UNLESS OTHERWISE SHOWN) |       |         |      |       |        |
|--|-------|---------|------|-------|--------|
| LOT  | BLOCK | AREA    | LOT  | BLOCK | AREA   |
| 1  | 43    | 0.161ha | 1    | 45    | 834    |
| 2  | 43    | 450     | 2    | 45    | 855    |
| 3  | 43    | 450     | 3    | 45    | 684    |
| 4  | 43    | 450     | 4    | 45    | 782    |
| 5  | 43    | 450     | 5    | 45    | 994    |
| 6  | 43    | 450     | 6    | 45    | 787    |
| 7  | 43    | 450     | 7    | 45    | 558    |
| 8  | 43    | 450     | 8    | 45    | 647    |
| 9  | 43    | 450     | 9    | 45    | 796    |
| 10   | 43    | 450     | 10   | 45    | 799    |
| 11   | 43    | 450     | 11   | 45    | 802    |
| 12   | 43    | 450     | 12   | 45    | 782    |
| 13   | 43    | 450     | 13   | 45    | 822    |
| 14   | 43    | 450     | 14   | 45    | 825    |
| 15   | 43    | 450     | 15   | 45    | 825    |
| 16   | 43    | 450     | 16   | 45    | 885    |
| 17   | 43    | 450     | 17   | 45    | 876    |
| 18   | 43    | 0.468ha | 18   | 46    | 819    |
| 19(BUFFER)   | 44    | 0.131ha | 19   | 46    | 795    |
| 20(WALKWAY)  | 44    | 300     | 20   | 46    | 798    |
| 21(WALKWAY)  | 44    | 300     | 21   | 46    | 802    |
| 22(PUL)  | 44    | 327     | 22   | 46    | 806    |
| 1  | 44    | 521     | 1    | 47    | 725    |
| 2  | 44    | 521     | 2    | 47    | 728    |
| 3  | 44    | 521     | 3    | 47    | 731    |
| 4  | 44    | 521     | 4    | 47    | 734    |
| 5  | 44    | 699     | 5    | 47    | 737    |
| 6  | 44    | 699     | 6    | 47    | 740    |
| 7  | 44    | 699     | 7    | 47    | 743    |
| 8  | 44    | 699     | 8    | 47    | 746    |
| 9  | 44    | 699     | 9    | 47    | 749    |
| 10   | 44    | 699     | 10   | 47    | 752    |
| 11   | 44    | 699     | 11   | 47    | 755    |
| 12   | 44    | 699     | 12   | 47    | 758    |
| 13   | 44    | 699     | 13   | 47    | 761    |
| 14   | 44    | 699     | 14   | 47    | 764    |
| 15   | 44    | 699     | 15   | 47    | 767    |
| 16(WALKWAY)  | 44    | 300     | 16   | 47    | 770    |
| 17(BUFFER)   | 44    | 300     | 17   | 47    | 773    |
| ROAD   |       | 2.38ha  | ROAD |       | 0.34ha |



| CURVE DATA   |        |        |               |                |
|--------------|--------|--------|---------------|----------------|
| CURVE NUMBER | RADIUS | ARC    | CHORD BEARING | CHORD DISTANCE |
| C1           | 70.00  | 14.50  | 66°13'55"     | 14.47          |
| C2           | 10.00  | 9.63   | 32°43'24"     | 9.26           |
| C3           | 25.00  | 5.08   | 10°56'31"     | 5.05           |
| C4           | 25.00  | 26.39  | 46°58'47"     | 25.19          |
| C5           | 25.00  | 21.66  | 102°04'27"    | 21.01          |
| C6           | 25.00  | 24.24  | 154°42'16"    | 23.31          |
| C7           | 25.00  | 24.74  | 30°50'19"     | 23.74          |
| C8           | 25.00  | 14.63  | 75°57'00"     | 14.42          |
| C9           | 10.00  | 6.56   | 73°54'20"     | 6.45           |
| C10          | 100.00 | 4.96   | 54°51'21"     | 4.96           |
| C11          | 100.00 | 17.36  | 62°54'59"     | 17.34          |
| C12          | 100.00 | 7.46   | 70°01'39"     | 7.46           |
| C13          | 560.00 | 128.93 | 58°28'29"     | 128.84         |
| C14          | 560.00 | 30.25  | 68°37'03"     | 30.24          |
| C15          | 560.00 | 43.28  | 70°22'39"     | 43.24          |
| C16          | 200.00 | 59.34  | 64°08'27"     | 59.12          |
| C17          | 170.00 | 50.45  | 63°55'52"     | 50.27          |
| C18          | 15.00  | 4.36   | 169°37'44"    | 4.35           |
| C19          | 15.00  | 12.30  | 21°26'35"     | 11.95          |
| C20          | 15.00  | 7.13   | 58°32'45"     | 7.06           |
| C21          | 10.00  | 15.86  | 26°43'53"     | 14.25          |
| C22          | 170.00 | 50.46  | 64°08'37"     | 50.30          |

| UTM COORDINATES NAD83-CSRS, EPOCH 2002<br>ZONE 8, CENTRAL MERIDIAN 135° WEST |             |            |           |         |
|--|-------------|------------|-----------|---------|
| STATION  | NORTHING    | EASTING    | ELEVATION | CSF     |
| 2027   | 6738493.925 | 363342.238 | 618.90    | 0.99983 |
| 1032   | 6738748.525 | 363732.483 |           |         |
| 1033   | 6738730.254 | 363737.762 |           |         |
| 1047   | 6738676.781 | 363754.946 |           |         |
| 3004   | 6738763.966 | 363822.562 |           |         |
| 3006   | 6738730.778 | 363844.111 |           |         |
| 1024   | 6738687.913 | 363606.157 |           |         |
| 1029   | 6738730.254 | 363737.762 |           |         |
| 1033   | 6738730.254 | 363737.762 |           |         |
| 1048   | 6738658.997 | 363727.219 |           |         |
| C10  | 6738692.238 | 363777.528 |           |         |
| 1056   | 6738654.554 | 363599.775 |           |         |
| 1057   | 6738620.258 | 363610.732 |           |         |
| 1058   | 6738611.309 | 363582.118 |           |         |
| 1059   | 6738645.168 | 363571.225 |           |         |
| 1075   | 6738534.476 | 363280.310 |           |         |
| 1077   | 6738502.738 | 363271.054 |           |         |
| 4  | 6738685.050 | 363179.290 |           |         |
| 18   | 6738689.432 | 363450.887 |           |         |
| 1001   | 6738485.116 | 363245.356 |           |         |
| 1002   | 6738543.499 | 363225.581 |           |         |
| 1023   | 6738640.910 | 363460.083 |           |         |
| 3036   | 6738508.241 | 363107.010 |           |         |
| 3037   | 6738424.018 | 363132.844 |           |         |

Coordinates were derived from a combination of GPS (static and RTK) and conventional measurements holding the coordinates of station 2027 fixed.

The NAD83-CSRS coordinates and ellipsoidal height of station 2027 were derived from a GPS dual frequency phase observation at station 2027 and processed by the Natural Resources Canada CSRS-PPP Service.

Elevations are orthometric derived from the HTV2.0 geoid model.

CSF stands for Combined Scale Factor.

Department of Natural Resources  
 Re: Section 29, Canada Lands Surveys Act  
 Confirmed: Dec 6, 2011  
 Brian Thompson, Head, Cadastral Services  
 Surveyor General Branch, Yukon