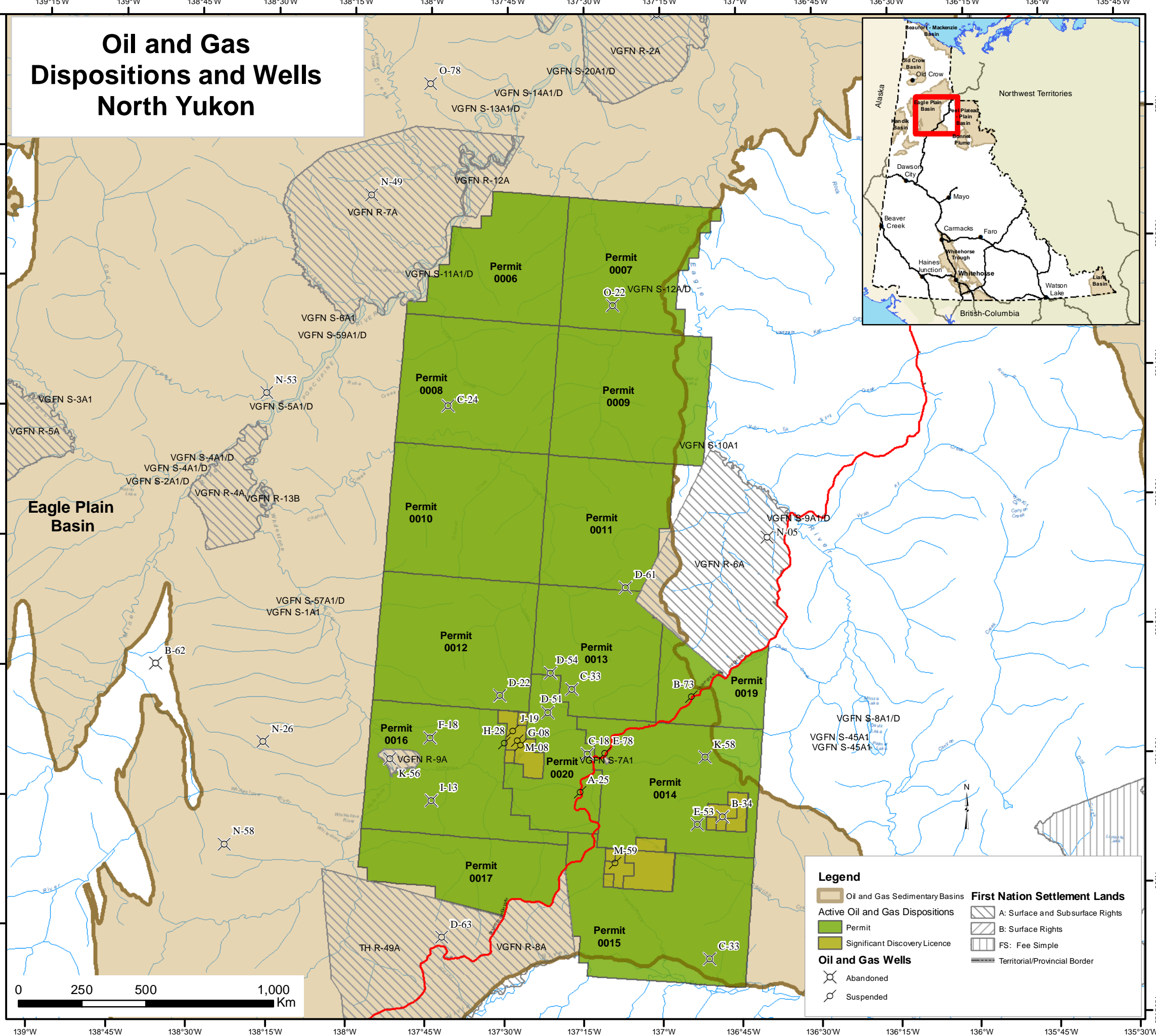


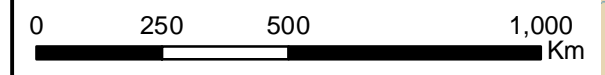
Oil and Gas Dispositions and Wells North Yukon



Legend

- Oil and Gas Sedimentary Basins
- Active Oil and Gas Dispositions
 - Permit
 - Significant Discovery Licence
- Oil and Gas Wells
 - Abandoned
 - Suspended
- First Nation Settlement Lands**
 - A: Surface and Subsurface Rights
 - B: Surface Rights
 - FS: Fee Simple
- Territorial/Provincial Border

Permit 006 30211.7 Ha All or portions of: 66-50-137-30 1 to 80 1 to 8 11 to 17 21 to 27 31 to 37 41 to 44 51 to 53 61, 71	Permit 007 34291.5 Ha All or portions of: 66-50-137-15 1 to 80 10, 19, 20 27 to 32 36 to 80	Permit 008 41228.6 Ha All or portions of: 66-40-137-30 1 to 80 1 to 80 66-40-137-45 1 to 80	Permit 009 41226.7 Ha All or portions of: 66-40-137-00 1 to 80 1 to 80 66-40-137-15 1 to 80	
Permit 010 41504.1 Ha All or portions of: 66-30-137-45 1 to 80 66-30-137-30 1 to 80	Permit 011 31880.7 Ha All or portions of: 66-30-137-15 1 to 80 66-30-137-00 36 to 80	Permit 012 41779.2 Ha All or portions of: 66-20-137-45 1 to 80 66-20-137-30 1 to 80	Permit 013 30164.6 Ha All or portions of: 66-20-137-00 31 to 38 41 to 49 51 to 80 66-20-137-30 1 to 80	
Permit 014 40323.6 Ha All or portions of: 66-10-137-00 1 to 10 12 to 20 22 to 30 32 to 80 66-10-137-15 7 to 10 19, 20, 30 66-10-136-45 1 to 12 16 to 22 26 to 32 35 to 42 45 to 80	Permit 015 42770.6 Ha All or portions of: 66-00-136-45 1 to 80 66-10-137-15 1, 11, 21 66-00-137-00 1 to 7 11 to 17 21 to 27 31 to 37 41 to 47 51 to 57 61 to 67 71 to 80 66-00-137-15 2 to 10 14 to 20 25 to 28 29, 30	Permit 016 38193.3 Ha All or portions of: 66-10-137-45 1 to 45 47 to 80 66-10-137-30 1, 2 11 to 14 21 to 29 31 to 80 66-10-137-15 31, 41, 51 61, 71, 72	Permit 017 25054.9 Ha All or portions of: 66-00-137-45 7 to 10 17 to 20 27 to 30 37 to 40 47 to 50 57 to 60 67 to 70 78 to 80 66-00-137-15 36 to 40 46 to 50 56 to 60 66 to 70 76 to 80 66-00-137-30 5 to 10 15 to 20 25 to 30 35 to 40 45 to 50 55 to 60 65 to 70 75 to 80	
Permit 019 16153.0 Ha All or portions of: 66-20-137-00 1 to 7 11 to 18 21 to 28 66-20-136-45 1 to 7 11 to 17 21 to 26 31 to 35 41 to 45 51 to 55 61 to 66 71 to 76	Permit 020 19773.2 Ha All or portions of: 66-20-137-15 41, 51 to 53 61 to 63 71 to 73 66-10-137-30 3 to 6 8 to 10 15, 16 66-10-137-15 2 to 6 12 to 18 22 to 29 32 to 40 42 to 50 52 to 60 62 to 70 73 to 75 77 to 80	SDL 020 2631.2 Ha All or portions of: 66-10-136-45 12 to 15 22 to 25 32 to 35 42 to 44 52 to 54	SDL 021 6333.0 Ha All or portions of: 66-00-137-00 7 to 10 17 to 20 27 to 30 37 to 40 47 to 50 57 to 60 67 to 70 77 to 80 66-10-137-00 11, 21, 31, 41	SDL 022 3672.3 Ha All or portions of: 66-10-137-30 5 to 10 16 to 20 26 to 30 39, 40 66-10-137-15 39, 40 65 to 67 75 to 78



Map Sheet
 Grid Area NAD83
 Grid Section NAD83