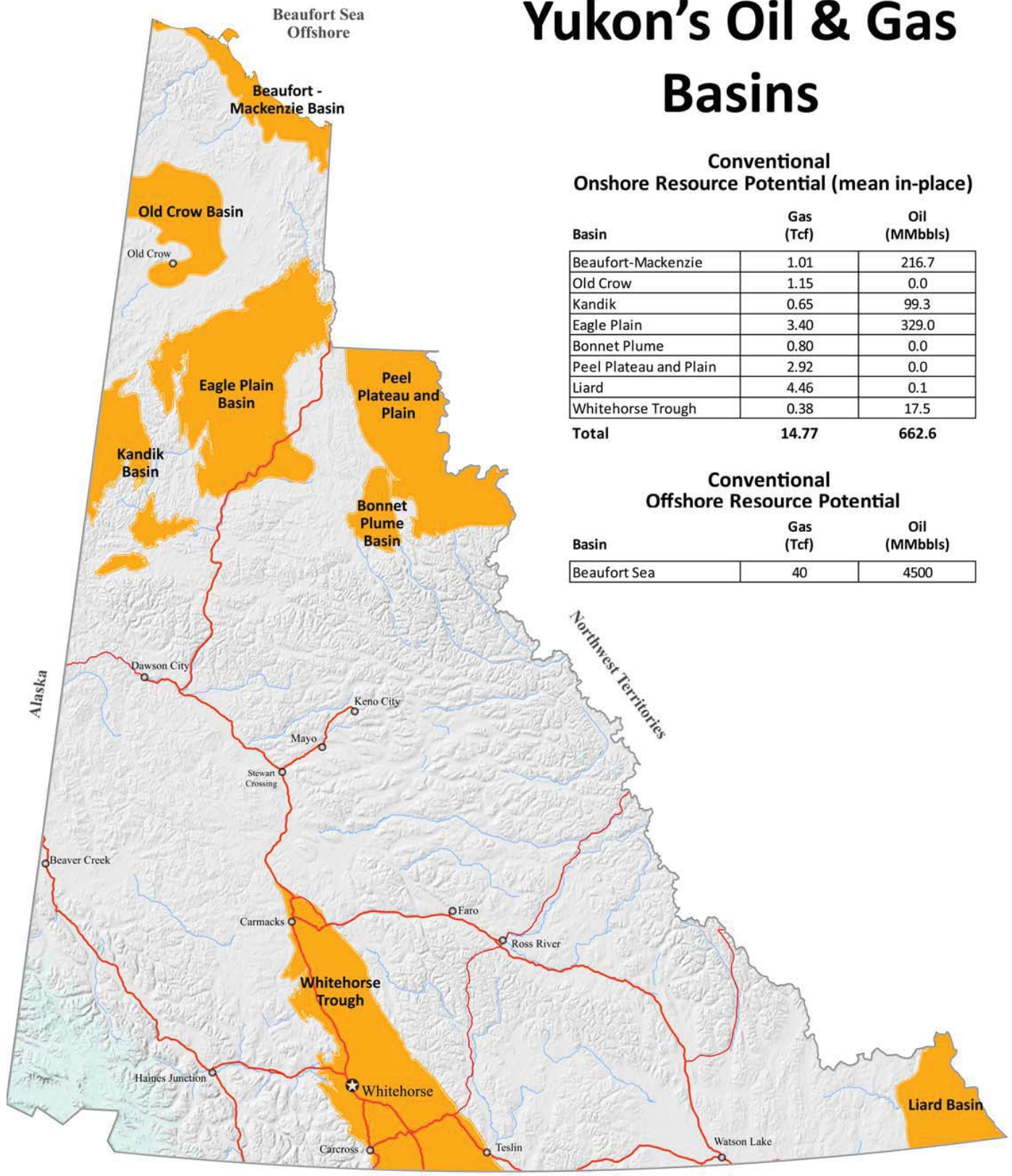


Yukon's Oil & Gas Basins



Conventional Onshore Resource Potential (mean in-place)

| Basin | Gas (Tcf) | Oil (MMbbls) |
|------------------------|--------------|--------------|
| Beaufort-Mackenzie | 1.01 | 216.7 |
| Old Crow | 1.15 | 0.0 |
| Kandik | 0.65 | 99.3 |
| Eagle Plain | 3.40 | 329.0 |
| Bonnet Plume | 0.80 | 0.0 |
| Peel Plateau and Plain | 2.92 | 0.0 |
| Liard | 4.46 | 0.1 |
| Whitehorse Trough | 0.38 | 17.5 |
| Total | 14.77 | 662.6 |

Conventional Offshore Resource Potential

| Basin | Gas (Tcf) | Oil (MMbbls) |
|--------------|-----------|--------------|
| Beaufort Sea | 40 | 4500 |