

CALL FOR WORK BIDS SPRING 2007

LOCATION: 2007B010

A. Oil and Gas Basin: Eagle Plain

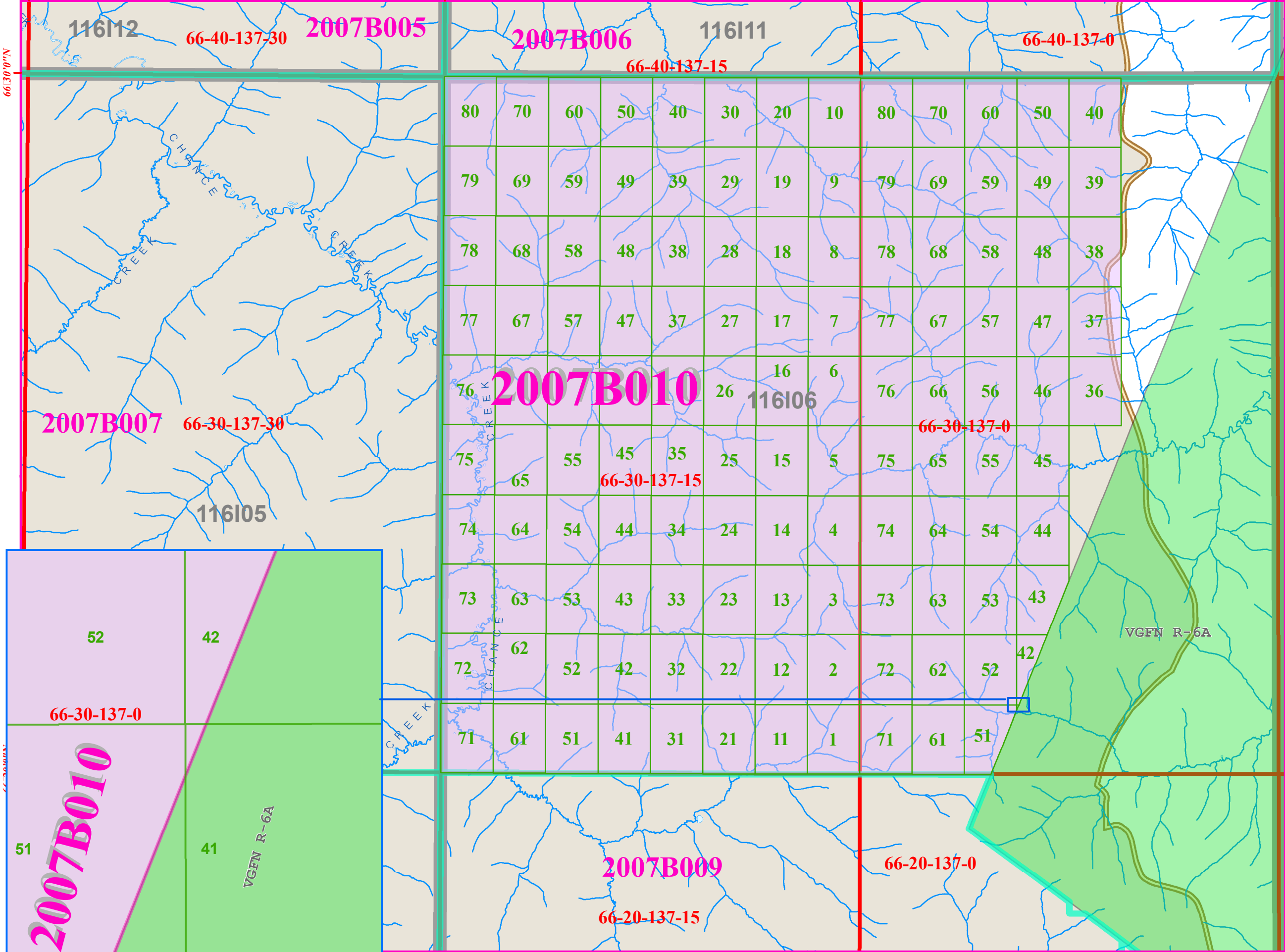
B. Location: 2007B010

Grid Area(s)	66-30-137-0	66-30-137-15				
Section(s)	36 to 80	1 to 80				

Excluding: Settlement Land as described in the Vuntut Gwitchin First Nation Final Agreement: R-6A in portions of: 66-30-137-30 section 41 to 43, 51	Total sections: All or portions of 125 sections. Total area: 318.8 square kilometres, more or less.
---	--

The map of Call for Work Bid Location 2007B010 is on the oil and gas website at http://www.emr.gov.yk.ca/oilandgas/rights_management_maps_and_data.html .

137°45'0"W 137°30'0"W 137°15'0"W 137°0'0"W



Spring 2007 Oil and Gas Call for Work Bids

Bid Location 2007B010
Eagle Plain
 318.8 Square Kilometres

Land Description for 2007B010

66-30-137-0 66-30-137-15
 36 to 80 1 to 80

EXCLUDING:

Settlement Land as described in the Vuntut Gwitchin First Nation Final Agreement: R-6A in portions of: 66-30-137-30 section 41 to 43, 51

-  Insets are for illustrative purposes only
-  Vuntut Gwitchin First Nation
-  Adjacent Bid Locations
-  Resource Basin
-  Existing Disposition
-  Map Sheet
-  Grid Area NAD83
-  Grid Section NAD83

